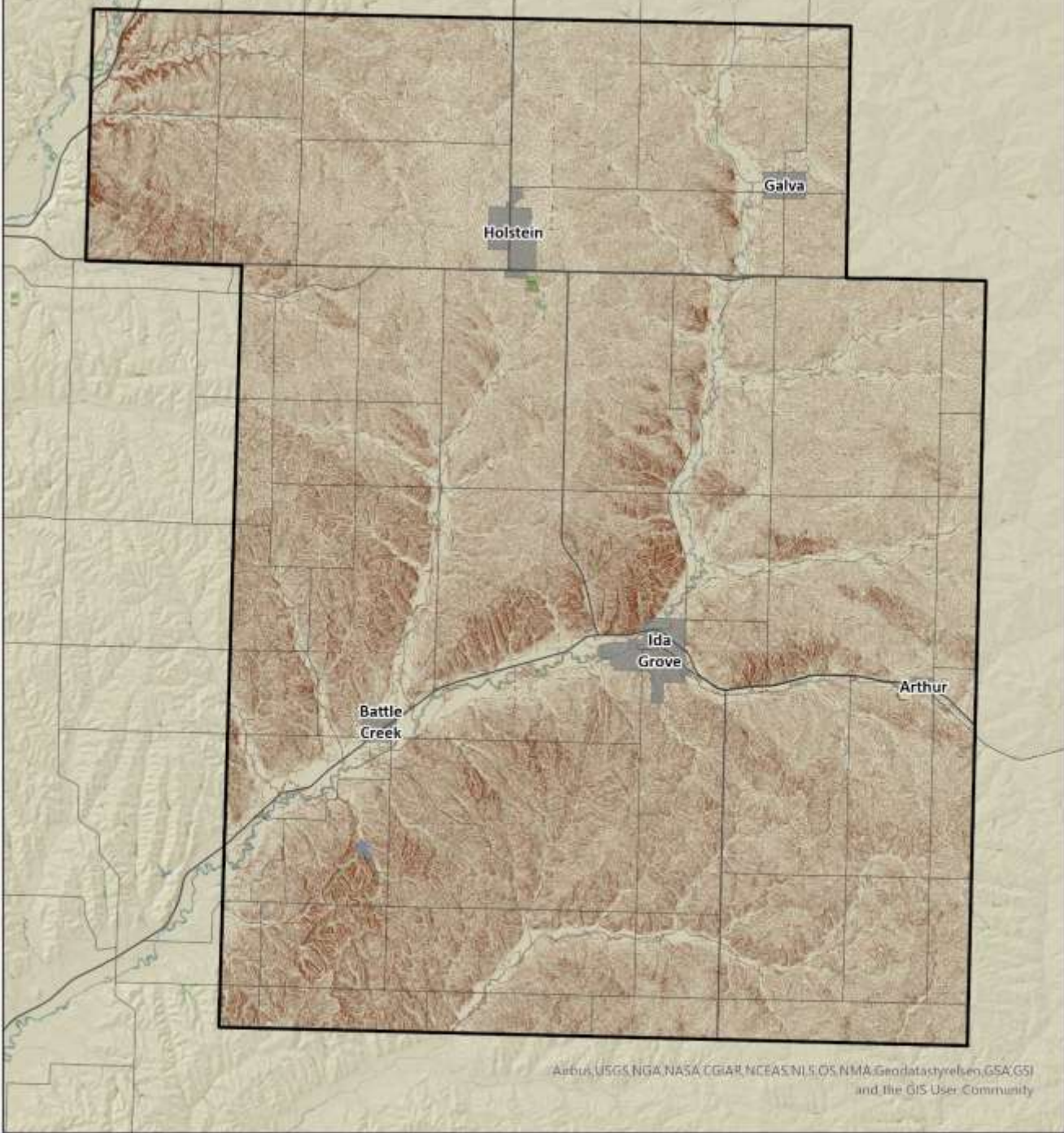



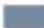
Table of Contents




B. Ida County	4.2-2
Profile – Unincorporated Area & County	4.2-2
Participation	4.2-10
Capabilities	4.2-10
Risk Assessment	4.2-14
Mitigation Actions, Strategies, & Projects	4.2-22
Jurisdictions	4.2-25
1. Arthur	4.2-25
2. Battle Creek	4.2-30
3. Galva	4.2-36
4. Holstein	4.2-42
5. Ida Grove	4.2-49

Topography Map, Ida County



Aerius, USGS, NGA, NASA, CGIAR, NCEAS, NLS, OS, NMA, Geodatastyrelsen, GSA, GSI and the GIS User Community

 Marsh, Swamp, Bog, Prairie
 River

 Lake, Reservoir
 Incorporated Areas
 County Boundary

 Contours
 Railroad

0 2 4 Miles



The map does not represent a survey, no liability is assumed for the accuracy of the data delineated herein, either expressed or implied by SMPCO.

© 2025 Siouxland Interstate Metropolitan Planning Council. Please call 712-279-6286 to obtain permission for use.

B. Ida County

Ida County is located in the south half of the northwest quarter of Iowa. The County is bordered by Cherokee County to the north, Sac County to the east, Crawford County to the south, and Woodbury County to the west. Ida County is approximately 432 square miles.

Cities within Ida County include Arthur, Battle Creek, Galva, Holstein, and Ida Grove.

PROFILE – UNINCORPORATED AREA & COUNTY

Rivers & Watersheds

The Maple River crosses through the center of the County, while the Little Sioux River crosses briefly into Ida County at the northwest corner. Other rivers include Battle Creek and Soldier River, as well as many smaller creeks and streams.

There are four (4) watersheds within the County that drain storm water and snow melt into streams and lakes, wetland areas, or into groundwater reserves. These watersheds are Blackbird-Soldier Watershed, Little Sioux Watershed, Maple Watershed, and Boyer Watershed. Regional breakdown for watersheds is provided in the *Planning Area* information section in I. Introduction, subsection B. The following map depicts the sub-watersheds within those as listed above. Subwatersheds are determined based on a hydrologic unit code (HUC) level 12, which includes more detail such as tributary data.

Landform Regions & Geology

Ida County is composed of two (2) distinct landform regions that include Northwest Iowa Plains and Southern Iowa Drift Plain. Both are marked by rolling hills – the result of the manipulation of glacial sediment deposits by glacial melt and streams.

Transportation Network

U.S. Highway 20 runs east to west through the northern portion of the County. This highway is intersected by U.S. Highway 59, which runs north/south through the center of the state. The transportation network also includes State Highways 31 and 175.

The County's secondary road system is composed of 731.47 miles. Within this category, Farm-to-Market roads make up 225.58 miles, while Area Service roads account for 505.89 miles. Gravel or earth surface types account for 597.96 miles of the secondary road system. The remaining 124.68 miles are composed of asphalt or PCC surface types. Planned and illustrative transportation projects under Federal jurisdiction are included in the SIMPCO SRTPA 2050 Long Range Transportation Plan (LRTP) – a document on a five-year update schedule coinciding with the region's hazard mitigation planning process. Funded projects are included in the annually updated SIMPCO SRTPA Transportation Improvement Plan (TIP).

County Governance & Supports

The county seat is located in Ida Grove, near the center of the County. Its jurisdictions covers all unincorporated portions within county boundaries. Ida County is governed by a three (3)-person Board of Supervisors **that meets the second and fourth Tuesday each month at 9:00 AM, and additional times when posted.** The Board serves as the executive and administrative branches of Ida County. Additional Offices include the following departments:

- Assessor
- Auditor
- Clerk of Court
- Conservation
- Emergency Management
- Emergency Services
- Engineer
- Public Health
- Recorder
- Sheriff
- Treasurer
- Veteran Affairs

The Ida County Emergency Management Agency provides coordination and works in partnerships with local communities, state, and federal agencies. Emergency Services Department has been added since the last HMP. The Ida County Sheriff's Office is the primary

law enforcement agency for all of Ida County and has added the position of School Resources Officer as a full-time position during the school year.

County Facilities

<i>Critical Facilities</i>	
Courthouse; Misc Equip	401 Moorehead, Ida Grove
Courthouse Annex; Misc Equip	401 Moorehead, Ida Grove
Garage/Shop & Related	1705 W 6th, Ida Grove
Road Mntc/Storage	377 1 st , Battle Creek
Roads Storage	323 W Railroad, Holstein
	Hwy M31, Arthur
Engineer's Office/Roads Dept	1705 W 6 th , Ida Grove
Landfill Dept Storage	2202 Indian Ave, Ida Grove
Landfill Dept Recycling Bldg & Related	2202 Indian Ave, Ida Grove
Park - Consvr Dept & Related	Sec 10 & 15, Corwin Twp
	Sec 9 & 10, Garfield Twp
Emergency Mgmt Communications Tower	Moorhead Ave

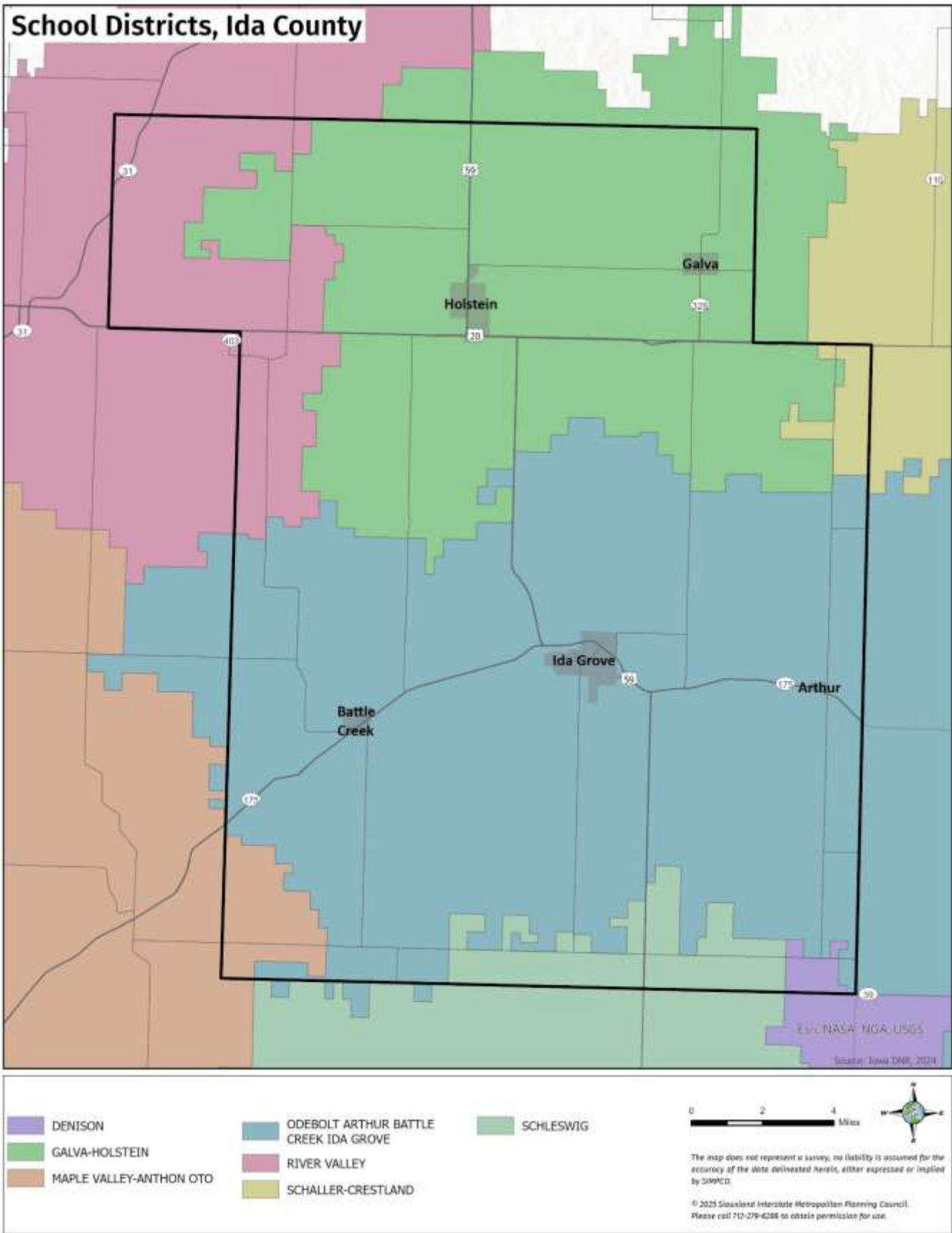
Education

Within Ida County there are eight (8) public schools divided into two (2) school districts. These districts include:

- Galva-Holstein Community School District
- Odebolt-Arthur & Battle Creek-Ida Grove Community School District

There are no colleges or universities based in Ida County, however there is an ISU Extension Office in Ida Grove.

Educational attainment in Ida Grove shows a strong emphasis on high school and associate-level education, with a higher share of residents completing these levels compared to the state average. A notable portion of the population has attended some college without earning a degree, indicating engagement with postsecondary education. However, Ida Grove trails behind the state in the number of residents holding bachelor's and graduate degrees, suggesting a gap



in higher-level academic achievement. The percentage of individuals without a high school diploma is also slightly above the state average, pointing to an area for potential improvement in early educational attainment. Overall, the data reflect a community with a solid foundation in basic and technical education but opportunities for growth in advanced degree completion.

<i>Level of Education</i>	<i>Ida</i>	<i>Iowa</i>
No high school diploma	11.5%	10.6%
High school degree (includes equivalency)	41.9%	30%
Some college, no degree	20.5%	19.6%
Associate’s degree	16%	21%
Bachelor’s degree	16.2%	20.9%
Graduate or professional degree	4.5%	10.7%

Population

Estimates through CensusReporter.org provides Ida County’s 2023¹ population of 6,944, showing a consistent decline since the decennial census reported 7,089 in 2010 and 7,005 in 2020.

The County’s proportion of residents aged 65 years and older is high compared to Iowa. The proportion of the population living with a disability is comparable to state levels. FEMA identifies both of these categories as vulnerable populations.

<i>Community Characteristics</i>	
Population (2023)	6,944
Population (2017)	6,965
Total Households	2,944
Median Household Income	\$62,841
Median Household Income – Iowa	\$73,147

<i>Vulnerable Populations</i>	<i>Count</i>	<i>Percent</i>	<i>Iowa</i>
5 years and younger	381	5.5%	5.7%
65 years and older	1,536	22.1%	18.5%
Below the poverty level	701	10.4%	11.3%

¹ Source: <https://censusreporter.org/profiles/05000US19093-ida-county-ia/>

Living with a disability	885	13%	13.2%
--------------------------	-----	-----	-------

Housing

Ida Grove offers more affordable housing compared to the state of Iowa, with a significantly lower median home value. The median rent is also slightly below the state average. The city has a total of 3,365 housing units, with an 89% occupancy rate. Of occupied units, 78% are owner-occupied. A modest number of homes remain vacant, suggesting a stable housing market. These figures highlight a community where homeownership is prevalent, and rental options are available, but limited.

<i>Housing Characteristics</i>		
	<i>Ida</i>	<i>Iowa</i>
Median Home Value	\$108,800	\$195,900
	<i>Count</i>	<i>Percent</i>
Total Housing Units	3,365	-
Occupied	2,961	88.8%
Owner-occupied	2,624	78%
Renter-occupied	740	22%
Vacant	370	11%

Income & Economics

Data from CensusReporter.org indicates a median household income of \$62,841 which is lower than both the Iowa and national estimates. County poverty estimates reflect about 10.4% of the population falls below the poverty line.

In Ida Grove, the civilian employed population aged 16 and older totals 3,533 individuals. The largest employment sectors in the city are education, health care, and social assistance, followed by manufacturing, which together employ a significant portion of the workforce. Agriculture, including forestry, fishing, and mining, also plays a key role in the local economy. Retail trade and construction are other notable sectors, while smaller portions of the population work in areas such as transportation, finance, and information services. Public administration, arts, entertainment, and professional services account for smaller segments of

the workforce. This diverse employment base reflects a community with strong ties to both traditional industries and service-oriented sectors.

Ida County identifies the following businesses and organizations as leading employers for the county.

- Cylinder Express
- Flint Hills Resources
- Galva-Holstein Community School District
- GOMACO
- GOMACO Trolley Company
- Hi-Way Products
- Holstein Manufacturing, Inc.
- Horn Memorial Hospital
- Invenergy/MidAmerican Wind Farms
- Johnson Propane, Heating, and Cooling
- Midwest Industries
- OABCIG Community School District
- Poet Bioprocessing
- Quad County Corn Processors
- Reliant Processing
- Ridge View School District
- Tiefenthaler Quality Meats
- United Bank of Iowa
- VT Industries

<i>Industry for the Civilian Employed Population 16 & over</i>		
Civilian employed population (16 and older)	3,533	-
Agriculture, forestry, fishing and hunting, and mining	385	10.9%
Construction	291	8.2%
Manufacturing	766	21.7%
Wholesale trade	58	1.6%
Retail trade	368	10.4%
Transportation and warehousing, and utilities	181	5.1%
Information	68	1.9%
Finance and insurance, and real estate and rental and leasing	131	3.7%
Professional, scientific, and management, and administrative and waste management services	73	2.1%
Education services and health care and social assistance	836	23.7%
Arts, entertainment, and recreation, and accommodation and food services	182	5.2%
Other services except public administration	129	3.7%
Public administration	62	1.8%

Valuation of County Assets

A current statement of values has not been provided. Based on the total building and personal property assessment valuation of \$13,547, 928 as received from 2019 and a minimum 40% increase for other counties in the region, this plan assumes an approximate valuation of \$18,967,100. This dollar amount serves as a foundation for minimum protected assets for mitigation projects affecting the county and its unincorporated areas as may be applicable in a cost-benefit analysis. A detailed valuation shall be fully considered within project parameters during project planning. Values inconsistent with this estimate may require an amendment at the county level prior to pursuit of mitigation funds as may be available.

PARTICIPATION

A planning meeting was conducted at the Ida County Courthouse on December 4, 2024 with the following county representatives in attendance.

- Ed Sohm, EMA
- Wyatt Reitmeier, Conservation Board
- Traci Riessen, Treasurer
- Corey Trucke, EMS Dept.
- Julie Phillips, Recorder
- Jeff Williams, Engineer

In addition to the in-person meeting, 28 survey responses were collected from Ida County residents. Their collective responses have been considered in discussion of county response efforts, concerns, needs, and recommendations.

A review of the plan including updates and revisions was completed February 26, 2026 by the County Auditor Kristy Gilbert and Emergency Management Agency Coordinator Ed Sohm. Upon said review, the County confirmed its commitment to adopt the plan as approved by FEMA.

CAPABILITIES

County capabilities are determined not only by physical infrastructure and equipment, but also by human resources, policy, and standards of practice. The following table itemizes supports including procedural sources, departmental roles, formal and informal community supports, and funding sources.

Ida County does not participate in NFIP. They do however have a floodplain ordinance and administrator with the County Zoning Administrator serving that role. As a county, its unincorporated areas have zero RL/SRL properties.

<i>Plans/Guidance</i>	
Capital Improvement Plan <i>via annual budget process</i>	
Comprehensive Land Use Plan	
Comprehensive Plan	
Flood Mitigation Assistance (FMA) Plan	
Local/County Emergency Plan	
<i>Policies/Ordinance</i>	
Zoning Ordinance	Subdivision Ordinance
Floodplain Ordinance	Tree Trimming Ordinance
Nuisance Ordinance (including <i>Debris Mgmt Plan</i>)	Floodplain Management Ordinance
<i>Programs/Commissions</i>	
National Flood Insurance Program (NFIP) Non-Participant	CID #190877A
Planning/Zoning Boards	Economic Development Planner
	Includes oversight of Builder's Plan (Zoning Officer)
	NFIP Floodplain Administrator (Zoning Officer as applicable for NFIP communities in Ida County)
	Zoning/Land Use Restrictions
<i>Staff/Department</i>	
<i>Included responsibility</i>	
Emergency Management Coordinator	Hazard Awareness Program
Emergency Response Team	Includes oversight of Emergency Operations Center
Engineer	
Mapping Specialist (GIS)	
Secondary Road Dept	Tree Trimming Program & Compliance
<i>Non-Governmental Organizations</i>	
Ida Grove Ambulance (independent of city/county operations, non-profit)	
American Red Cross	
Community Organizations (Lions, Kiwanis, etc.)	
Veterans Groups	
<i>Local Funding Availability/Eligibility</i>	
Community Development Block Grants	

Capital Improvements funding	
Levy taxes for specified purpose	
Fees for water, sewer, gas, or electric services	
Impact fees for new development under the Economic Development Commission	
TIF	
Potential funding through Utility earnings	
Ability to incur debt through	general obligation bonds
	special tax bonds
	private activities

It is important to note that standards of practice, whether written or implied, are based on State Code, with the most stringent taking precedence. Ida County has adapted its departmental structure and representation to best serve residents efficiently and effectively.

Review of Actions Taken

communication/education		
Promo/Info	Ida Co	2020: Actively promote available trainings; <i>County EMA, County Admin Staff</i> (no funding need anticipated) HIGH PRIORITY Update: County intends to continue promoting state-funded training programs as available.
Warning Sirens	Ida Co	2020: An additional warning siren would benefit Crawford Creek; <i>City Council, County EMA</i> (Local funds, County supports, State/Federal response funds, PDM, Community Benefits funds) MEDIUM PRIORITY
Warning Sirens	Ida Co.	Objective Met. Review of available resources indicates siren is not needed. County will promote existing internet system with improved coverage capacity. The County plans to provide signage and other promotions on social media forums to promote subscriptions to alert services.
tools/equipment		
Generator & Related Projects	All Counties	2020: Assess availability of generators for all critical facilities, portable or permanent. Prep all critical facilities for connection to generators as applicable; <i>County EMA</i> (Varying levels of funds needed. Support may come through County, State, and Federal grant and loan programs) HIGH PRIORITY
Generator & Related Projects	Ida County	Completed. Community assessments of critical facilities and generator compatibility have been completed. The Courthouse addition is ready. Transfer switches are in place where needed for City offices in Battle Creek and Holstein. Findings where more transfer switches are needed have been included as new projects as collaborative efforts between the County and applicable communities.
Equipment	Region (Initiated by Ida County)	2020: Sandbag fillers. Only 2 are available in the region and flooding often impacts several counties concurrently. Interest in accumulating a stockpile to meet multiple community needs. <i>County Engineer, EMA, Regional collaboration</i> (Collective County funds , PDM) HIGH PRIORITY

		Update. No action taken. Still interested in have available for extreme events. Carry to 2026 HMP as a Region project.
Equipment	Ida County	2020: ATV for access to levees for inspection regardless of road conditions. <i>County EMA</i> (County funds) MEDIUM PRIORITY
		Resolved. Roads Dept and Sheriff's department added side-by-sides to inventory. Anticipated availability if needed, especially for scheduled inspections.
Equipment	Ida County	2020: Additional road closure barricades are needed with consideration to be given to another trailer in order to haul to multiple locations. To accommodate approximately 80 roadways are subject to closure in the event of an emergency. <i>County Engineer, EMA</i> (County Funds, PDM) HIGH PRIORITY
		Update: No action taken. Additional barricades still needed.
development		
Improve existing facilities & infrastructure	Ida County	2020: Waterlines are not looped at MidWest Industries, reducing the available water pressure at fire hydrants. <i>County engineer, Midwest Indus business manager, EMA</i> (County funds, private funds, Response support funds, PDM) MEDIUM PRIORITY
Improve existing facilities & infrastructure	Ida County	Update. Jurisdictional oversight of need has been relegated to the City of Ida Grove. Related work is included for consideration under their new projects. While improvements specific to this site are still necessary, Project is closed at County level.
Improve existing facilities & infrastructure	Ida County	2020: Not all outlying shops are insulated. New project needed to add heat and insulation. Access and issues accelerating due to ice accumulation. <i>County Department of Secondary Roads</i> (County funds, Transportation facilities program funds, Building remediation funds) LOW PRIORITY
Improve existing facilities & infrastructure	Ida County	Update. Insulation and heating improvements still needed at Battle Creek shop, affecting access hindered by ice accumulation. Should funding become available, facility replacement is needed in Holstein.
Bridges & Roads	Ida County	2020: At Ida Grove: Potential for work to add shoulder along Old Hwy 59 and M15, also trap area attention. Work is needed along Jasper Ave; <i>County Engineer, Collaborate w/City Admin</i> (County funds, Transportation funds, PDM) LOW PRIORITY
Bridges & Roads	Ida County	Complete. Shoulders as provided have been rebuilt. Project cost ranged from \$8-9M.
Bridges & Roads	Ida County	2020: At Ida Grove: When flooded, no access to city wells along Keystone Ave. Mapping of well needed north of 387th St, off M15. County has access road to maintenance sheds. Improvements needed. <i>County Engineer, Collaboration with City Streets Dept.</i> (County funds, City support, transportation funds, PDM) MEDIUM PRIORITY
		Update. Little progress has been made on this objective due to higher priority strategies taking precedence. Project carries into the 2026 HMP.
flow control		
Drainage projects	Ida Co	2020: At Quimby drainage ditch dredging from Quimby and establishing routine/scheduled maintenance; <i>County Engineer, Collaborate with City staff, IDNR</i> (County Roads funds, local funds) HIGH PRIORITY
		Update: Dredging has been completed for some areas, however major maintenance is still needed.
refuge		
technology		

RISK ASSESSMENT

As with most participating jurisdictions, Ida County has implemented infrastructure investments geared toward enhancing resiliency including communications improvements and the addition of its Emergency Services Department. Other projects affecting the county, but not necessarily fully within their control includes the pending CO₂ pipeline. The County is actively considering the potential addition of the pipeline within its emergency response planning process. As potential effects related to a spill or line breakage remain relatively unclear, the County will continue to assess related training opportunities as means of maximizing preparedness should pipeline construction take place.

The County intends to adopt building code standards following state practices by reference. In doing so, the county is increasing awareness of impacts of disaster, guiding residents to make

Driver leaves scene after railroad crash

Published by admin on Mon, 06/06/2022 - 4:53pm



An unidentified driver caused \$25,000 in damage at Market Avenue and Highway 175 Saturday after running a stop sign and damaging railroad track and the driver's own vehicle.

The crash took place 2:41 a.m. when the driver was southbound on Market Avenue and did not stop at the railroad intersection for Market Avenue and Highway 175.

Running through the intersection, the driver struck the track for the railroad.

www.idacountycourier.com/content/driver-leaves-scene-after-railroad-crash *Driver leaves scene after railroad crash.* Published by [Ida County Courier](#) admin on Mon, 06/06/2022 - 4:53pm (June 10, 2025)

informed decisions when adding or improving structures on County and unincorporated properties. Ida County's Flood Mitigation Assistance Plan is in need of an update. As of December 2024, the county board is working with Iowa DNR to update floodplain maps and related ordinances. The county is also considering the development of a debris management plan allowing for coordinated cleanup efforts in the event of a major disaster. The county does not currently have a written Critical Facilities Plan (Mitigation/Response/Recovery). Practices

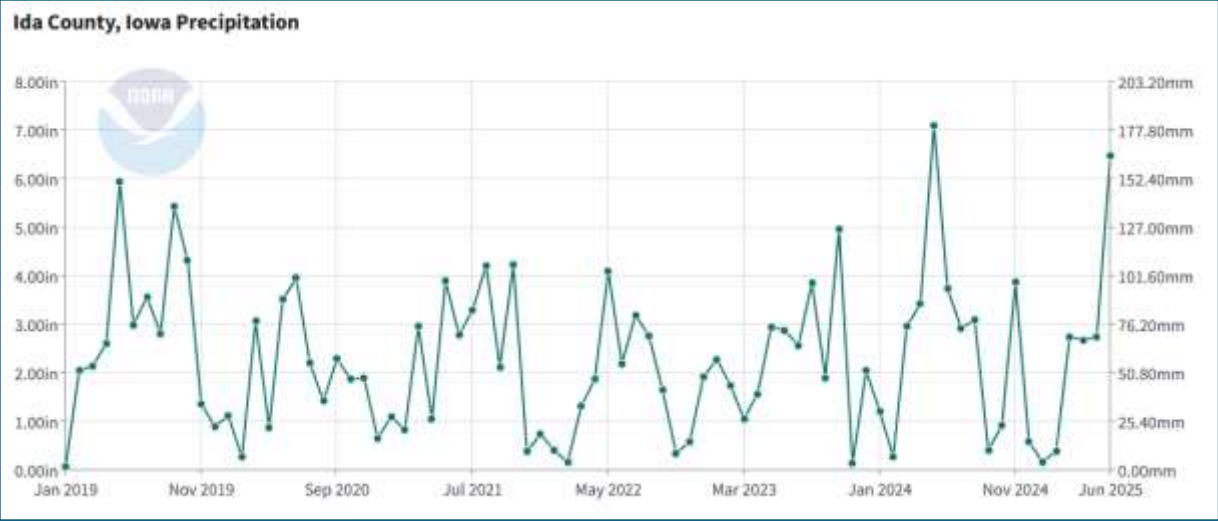
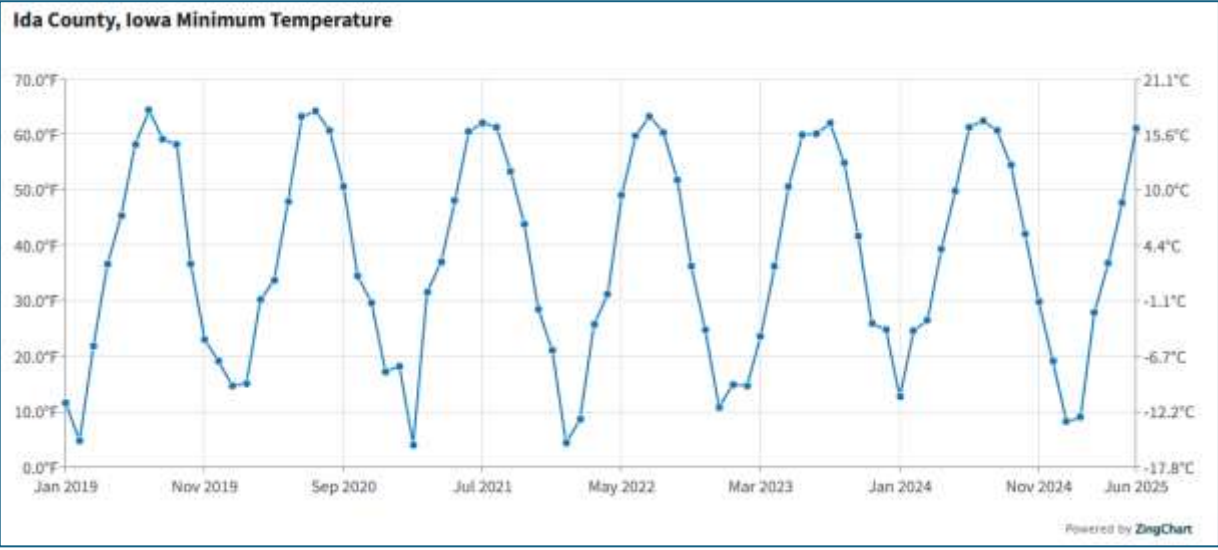
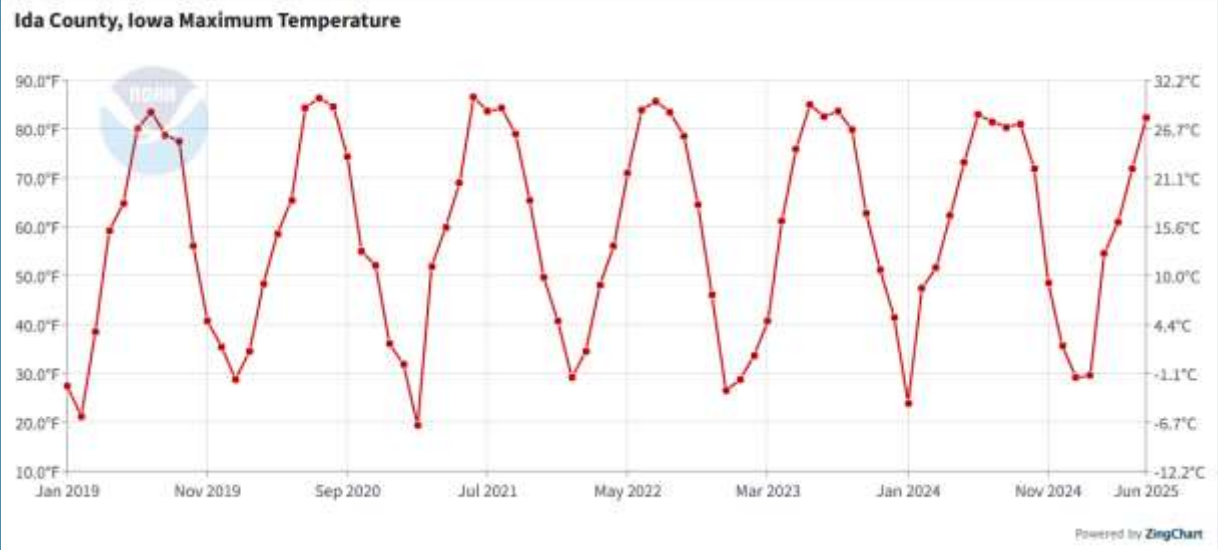
are in place, and there is an anticipated course of action. A formal plan with scheduled review is recommended. Ida County does have a FIRM but is not an active NFIP participant. Floodplain in unincorporated areas does not include enough insurable structures to warrant participation.

Roadways are a significant consideration in mitigation planning for Ida County. A high percentage of gravel roads alone incurs increased expense depending on weather events. Over-the-road freight is another significant detriment to all roadways as the state issues recurring exemptions for weight limits to accommodate ag and energy businesses. Road installations are engineered based on use and mandatory weight limits. When those are disregarded, even for a good cause, wear and deterioration is accelerated. Future reconstruction projects may consider accommodation for maximum potential load weights as opposed to maximum permitted.

Ida County has made significant gains in connectivity throughout its communities and unincorporated areas. Efforts will continue as opportunities become available. As such, this is included as a new project for the county for the 2026 HMP.

Weather patterns contribute to Ida County's considerations in mitigation planning. For reference, the following charts depict maximum temperature, minimum temperature, and precipitation by month for the county² between November 2019 and December 2024.

² Source: www.ncei.noaa.gov/access/monitoring/climate-at-a-glance/county/time-series/IA



Also sourced from NOAA, the Storm Event database³ provides the following record of events for Ida County.

Summary of Storm Events

Number of County/Zone areas affected:	2
Number of Days with Event:	96
Number of Days with Event and Death:	0
Number of Days with Event and Death or Injury:	0
Number of Days with Event and Property Damage:	3
Number of Days with Event and Crop Damage:	18
Number of Event Types reported:	16

Storm Events as Recorded

<i>Location</i>	<i>Date</i>	<i>Time</i>	<i>Type</i>	<i>Mag</i>	<i>Dth</i>	<i>Inj</i>	<i>PrD</i>	<i>CrD</i>
IDA (ZONE)	11/26/2019	14:00	Winter Weather		0	0	0.00K	0.00K
IDA (ZONE)	11/28/2019	22:00	Winter Weather		0	0	0.00K	0.00K
IDA (ZONE)	1/17/2020	5:30	Blizzard		0	0	0.00K	0.00K
IDA (ZONE)	1/18/2020	15:00	Cold/wind Chill		0	0	0.00K	0.00K
IDA (ZONE)	1/21/2020	23:00	Winter Weather		0	0	0.00K	0.00K
IDA (ZONE)	2/12/2020	23:00	Cold/wind Chill		0	0	0.00K	0.00K
IDA (ZONE)	2/19/2020	2:00	Winter Weather		0	0	0.00K	0.00K
IDA (ZONE)	3/19/2020	19:00	Winter Weather		0	0	0.00K	0.00K
IDA (ZONE)	4/12/2020	9:00	Winter Weather		0	0	0.00K	0.00K
ARTHUR	6/5/2020	1:02	Hail	1.00 in.	0	0	0.00K	0.00K
IDA GROVE	6/5/2020	0:53	Hail	1.00 in.	0	0	0.00K	0.00K
IDA GROVE	6/5/2020	0:57	Hail	1.75 in.	0	0	0.00K	0.00K
IDA GROVE	6/5/2020	0:59	Hail	2.50 in.	0	0	0.00K	0.00K
IDA GROVE	6/5/2020	0:59	Hail	1.50 in.	0	0	0.00K	0.00K
IDA GROVE	6/5/2020	1:06	Hail	1.00 in.	0	0	0.00K	0.00K
IDA (ZONE)	6/9/2020	23:15	High Wind	56 kts. EG	0	0	6.00K	0.00K
IDA (ZONE)	6/9/2020	23:30	High Wind	52 kts. EG	0	0	5.00K	0.00K

³ Source: <https://www.ncdc.noaa.gov/stormevents/>

IDA (ZONE)	7/28/2020	0:00	Drought		0	0	0.00K	2.350M
IDA (ZONE)	8/1/2020	0:00	Drought		0	0	0.00K	1.900M
ARTHUR	8/10/2020	8:29	Thunderstorm Wind	56 kts. EG	0	0	1.00K	50.00K
IDA GROVE	8/10/2020	8:20	Thunderstorm Wind	61 kts. EG	0	0	1.00K	0.00K
IDA (ZONE)	9/1/2020	0:00	Drought		0	0	0.00K	125.00K
IDA (ZONE)	10/1/2020	0:00	Drought		0	0	0.00K	75.00K
IDA (ZONE)	10/25/2020	3:00	Winter Weather		0	0	0.00K	0.00K
IDA (ZONE)	11/1/2020	0:00	Drought		0	0	0.00K	240.00K
IDA (ZONE)	11/9/2020	22:00	Ice Storm		0	0	0.00K	0.00K
IDA (ZONE)	12/1/2020	0:00	Drought		0	0	0.00K	0.00K
IDA (ZONE)	12/23/2020	10:00	Blizzard		0	0	0.00K	0.00K
IDA (ZONE)	12/29/2020	8:00	Winter Weather		0	0	0.00K	0.00K
IDA (ZONE)	1/1/2021	0:00	Drought		0	0	0.00K	0.00K
IDA (ZONE)	1/15/2021	0:00	Blizzard		0	0	0.00K	0.00K
IDA (ZONE)	1/23/2021	18:00	Winter Weather		0	0	0.00K	0.00K
IDA (ZONE)	1/25/2021	12:00	Winter Weather		0	0	0.00K	0.00K
IDA (ZONE)	2/1/2021	0:00	Drought		0	0	0.00K	0.00K
IDA (ZONE)	2/4/2021	3:00	Winter Weather		0	0	0.00K	0.00K
IDA (ZONE)	2/14/2021	6:00	Extreme Cold/wind Chill		0	0	0.00K	0.00K
IDA (ZONE)	2/21/2021	5:00	Winter Storm		0	0	0.00K	0.00K
GALVA	5/2/2021	19:37	Hail	0.88 in.	0	0	0.00K	2.00K
IDA GROVE	6/16/2021	20:52	Hail	0.75 in.	0	0	0.00K	233.00K
IDA GROVE	6/16/2021	21:00	Hail	1.25 in.	0	0	0.00K	0.00K
IDA GROVE	6/16/2021	21:02	Hail	1.00 in.	0	0	0.00K	0.00K
IDA GROVE	6/16/2021	20:34	Thunderstorm Wind	52 kts. EG	0	0	0.00K	0.00K
IDA (ZONE)	7/27/2021	0:00	Drought		0	0	0.00K	61.00K
IDA (ZONE)	8/1/2021	0:00	Drought		0	0	0.00K	2.00K
ARTHUR	8/30/2021	21:02	Hail	1.75 in.	0	0	0.00K	0.00K
ARTHUR	8/30/2021	21:06	Hail	1.75 in.	0	0	0.00K	33.00K
IDA GROVE MUNI ARPT	8/30/2021	20:54	Hail	0.75 in.	0	0	0.00K	0.00K
IDA (ZONE)	12/10/2021	13:00	Winter Weather		0	0	0.00K	0.00K

IDA (ZONE)	12/15/2021	20:30	High Wind	59 kts. MG	0	0	0.00K	0.00K
BATTLE CREEK	12/15/2021	16:42	Tornado	EF1	0	0	200.00K	0.00K
GALVA	12/15/2021	16:58	Tornado	EF0	0	0	75.00K	0.00K
IDA (ZONE)	1/6/2022	5:00	Cold/wind Chill		0	0	0.00K	0.00K
IDA (ZONE)	1/14/2022	5:00	Winter Weather		0	0	0.00K	0.00K
IDA (ZONE)	2/21/2022	17:00	Winter Weather		0	0	0.00K	0.00K
IDA (ZONE)	2/22/2022	19:30	Cold/wind Chill		0	0	0.00K	0.00K
IDA GROVE	4/12/2022	16:57	Hail	1.00 in.	0	0	0.00K	0.00K
IDA GROVE	4/12/2022	16:57	Hail	1.00 in.	0	0	0.00K	0.00K
IDA GROVE MUNI ARPT	4/12/2022	19:02	Thunderstorm Wind	52 kts. EG	0	0	0.00K	0.00K
IDA (ZONE)	4/19/2022	0:00	Drought		0	0	0.00K	0.00K
IDA (ZONE)	4/23/2022	10:45	High Wind	38 kts. MS	0	0	0.00K	0.00K
GALVA	4/23/2022	5:10	Thunderstorm Wind	52 kts. EG	0	0	0.00K	0.00K
IDA (ZONE)	5/1/2022	0:00	Drought		0	0	0.00K	36.00K
HOLSTEIN	5/12/2022	18:40	Thunderstorm Wind	70 kts. EG	0	0	0.00K	0.00K
IDA GROVE MUNI ARPT	5/19/2022	22:49	Hail	1.00 in.	0	0	0.00K	0.00K
GALVA	5/30/2022	5:40	Thunderstorm Wind	61 kts. EG	0	0	0.00K	0.00K
GALVA	5/30/2022	5:40	Thunderstorm Wind	61 kts. EG	0	0	0.00K	0.00K
GALVA	5/30/2022	5:42	Thunderstorm Wind	61 kts. EG	0	0	0.00K	0.00K
IDA GROVE	5/30/2022	5:33	Thunderstorm Wind	65 kts. EG	0	0	0.00K	0.00K
IDA (ZONE)	6/14/2022	0:00	Drought		0	0	0.00K	185.00K
IDA (ZONE)	7/1/2022	0:00	Drought		0	0	0.00K	704.00K
IDA (ZONE)	8/1/2022	0:00	Drought		0	0	0.00K	110.00K
IDA (ZONE)	9/1/2022	0:00	Drought		0	0	0.00K	281.00K
IDA (ZONE)	10/1/2022	0:00	Drought		0	0	0.00K	0.00K
IDA (ZONE)	11/1/2022	0:00	Drought		0	0	0.00K	0.00K
IDA (ZONE)	11/29/2022	6:00	Winter Weather		0	0	0.00K	0.00K
IDA (ZONE)	12/1/2022	0:00	Drought		0	0	0.00K	0.00K

IDA (ZONE)	12/8/2022	16:30	Winter Weather		0	0	0.00K	0.00K
IDA (ZONE)	12/22/2022	10:30	Blizzard		0	0	0.00K	0.00K
IDA (ZONE)	12/22/2022	2:00	Extreme Cold/wind Chill		0	0	0.00K	0.00K
IDA (ZONE)	1/1/2023	0:00	Drought		0	0	0.00K	0.00K
IDA (ZONE)	1/2/2023	18:00	Winter Weather		0	0	0.00K	0.00K
IDA (ZONE)	1/11/2023	5:00	Dense Fog		0	0	0.00K	0.00K
IDA (ZONE)	1/18/2023	17:00	Winter Storm		0	0	0.00K	0.00K
IDA (ZONE)	1/28/2023	0:00	Winter Weather		0	0	0.00K	0.00K
IDA (ZONE)	2/1/2023	0:00	Drought		0	0	0.00K	0.00K
IDA (ZONE)	3/1/2023	0:00	Drought		0	0	0.00K	0.00K
IDA (ZONE)	3/8/2023	16:30	Winter Weather		0	0	0.00K	0.00K
IDA (ZONE)	3/22/2023	21:30	Winter Weather		0	0	0.00K	0.00K
IDA (ZONE)	4/1/2023	0:00	Drought		0	0	0.00K	0.00K
ARTHUR	4/19/2023	18:52	Hail	1.00 in.	0	0	0.00K	0.00K
IDA (ZONE)	4/30/2023	8:00	Strong Wind	43 kts. MG	0	0	0.00K	0.00K
IDA (ZONE)	5/1/2023	0:00	Drought		0	0	0.00K	0.00K
IDA (ZONE)	6/13/2023	0:00	Drought		0	0	0.00K	0.00K
IDA (ZONE)	7/1/2023	0:00	Drought		0	0	0.00K	0.00K
IDA (ZONE)	7/26/2023	10:00	Excessive Heat		0	0	0.00K	0.00K
IDA (ZONE)	8/1/2023	0:00	Drought		0	0	0.00K	0.00K
IDA (ZONE)	8/19/2023	13:00	Excessive Heat		0	0	0.00K	0.00K
IDA (ZONE)	8/21/2023	11:00	Excessive Heat		0	0	0.00K	0.00K
IDA (ZONE)	9/1/2023	0:00	Drought		0	0	0.00K	0.00K
IDA (ZONE)	10/1/2023	0:00	Drought		0	0	0.00K	10.150M
IDA (ZONE)	1/8/2024	15:00	Winter Storm		0	0	0.00K	0.00K
IDA (ZONE)	1/11/2024	18:00	Winter Weather		0	0	0.00K	0.00K
IDA (ZONE)	1/12/2024	15:00	Blizzard		0	0	0.00K	0.00K
IDA (ZONE)	1/12/2024	18:00	Extreme Cold/wind Chill		0	0	0.00K	0.00K
IDA (ZONE)	1/18/2024	10:00	Winter Weather		0	0	0.00K	0.00K
IDA (ZONE)	1/19/2024	22:00	Cold/wind Chill		0	0	0.00K	0.00K
IDA (ZONE)	2/27/2024	17:00	Winter Weather		0	0	0.00K	0.00K
ARTHUR	6/16/2024	0:10	Thunderstorm Wind	65 kts. EG	0	0	0.00K	0.00K

ARTHUR	6/16/2024	0:10	Thunderstorm Wind	61 kts. EG	0	0	0.00K	9.00K
HOLSTEIN	6/23/2024	4:00	Flood		0	0	0.00K	0.00K
IDA (ZONE)	7/13/2024	12:00	Excessive Heat		0	0	0.00K	0.00K
IDA (ZONE)	7/31/2024	11:00	Heat		0	0	0.00K	0.00K
IDA (ZONE)	8/2/2024	12:00	Heat		0	0	0.00K	0.00K
IDA (ZONE)	8/5/2024	12:00	Excessive Heat		0	0	0.00K	0.00K
IDA (ZONE)	8/25/2024	12:00	Excessive Heat		0	0	0.00K	0.00K
IDA (ZONE)	10/29/2024	0:00	Drought		0	0	0.00K	0.00K
IDA (ZONE)	11/1/2024	0:00	Drought		0	0	0.00K	0.00K
IDA (ZONE)	12/4/2024	12:00	Strong Wind	40 kts. MG	0	0	0.00K	0.00K
IDA (ZONE)	12/19/2024	12:00	Strong Wind	41 kts. MG	0	0	0.00K	0.00K

Priority Hazards

Ida County recognizes the following as priority hazards.

- Drought
- Tornado Windstorm
- Severe Winter Weather
- Flood – Riverine and Flash

Using the NOAA Storm Event database, 119 events were reported between 11/01/2019 and 12/31/2024 (1888 days) in the Ida County zone with an estimated total of \$288,000 in property damages and more than \$16.5M in crop damages. Additional details are provided in directly affected communities where applicable. The following table is a summary of effects of those events.

<i>Summary of Outcomes</i>	
Number of County/Zone areas affected:	2
Number of Days with Event:	96
Number of Days with Event and Death:	0
Number of Days with Event and Death or Injury:	0
Number of Days with Event and Property Damage:	3

Number of Days with Event and Crop Damage:	18
Number of Event Types reported:	16

<i>Occurrences per storm type</i>			
Drought	31	Extreme Cold/wind Chill	3
Winter Weather	23	Strong Wind	3
Hail	18	Winter Storm	3
Thunderstorm Wind	12	Heat	2
Excessive Heat	6	Tornado	2
Blizzard	5	Dense Fog	1
Cold/wind Chill	5	Flood	1
High Wind	4	Ice Storm	1

Using NOAA data alone, it is no surprise that Ida County added Drought as one of its priority hazards, a change to its 2019 assessment. Other identified priority hazards are consistent with the previous Plan. Drought conditions to date have been more impactful on county properties with cities not yet experiencing extreme effects. Flooding concerns are focused on flash flood events causing washout on gravel roads and concern for lack of or ineffective runoff controls. Stabilization is included with routine maintenance, however, the county is in need of alternatives that reduce frequency of maintenance investments.

Additional projects identified by the county to improve its sustainability through severe weather disasters and occurrence of other disasters are included in the following table.

MITIGATION ACTIONS, STRATEGIES, & PROJECTS

communication/education		
Promo/Info	Ida Co	New. Improve awareness of program availability. <i>County EMA, emergency response teams throughout county, State program officer(s).</i> (State program funds where applicable; in-kind volunteer time) HIGH PRIORITY.
Assessment/Study	Ida County	New. Due to excessive washout during flash flood events, enhanced by extremely dry/drought conditions, the county is seeking funds to enable an assessment of alternative practices to stabilize gravel roads. Key concern is maintaining access/exit in the event of severe weather. This may include a demonstration project to test varying applications. <i>County Engineer/ Secondary Roads, IA DOT, County EMA</i> (Road use funds, local general budget funds, USDA or DNR programs as may be available, Proj scoping funds). MEDIUM PRIORITY

tools/equipment		
Generator & Related Projects	Ida County	New. County is considering funding opportunities to ensure all communities are equipped with generators and/or transfer switches at City Halls/Community Centers and Fire Departments. <i>County EMA, City Emergency Response Department(s)</i> , (Varying levels of funds needed. Support may come through County, State, and Federal grant and loan programs) HIGH PRIORITY
Generator & Related Projects	Ida County	New. Add generator or transfer switch capacity to each County Department to ensure continuity of operations in the event of a disaster. Consider relocation opportunities in the event of displacement during and after absence of dedicated power source. <i>County EMA, respective County Department Head</i> (PDM, Community Benefits Grants, County General Fund) HIGH PRIORITY
Equipment	Region (Initiated by Ida County)	Carry Over. Sandbag fillers. Increase availability for the region as flooding often impacts several counties concurrently. Interest in accumulating a stockpile to meet multiple community needs. <i>County Engineer, EMA, Regional collaboration</i> (Collective County funds , PDM) HIGH PRIORITY
Equipment	Ida County	Carry over. Additional road closure barricades are needed with consideration to be given to another trailer in order to haul to multiple locations. To accommodate approximately 80 roadways are subject to closure in the event of an emergency. <i>County Engineer, EMA</i> (County Funds, PDM) HIGH PRIORITY
development		
Improve existing facilities & infrastructure	Ida County	Carry Over. Insulate outlying shops. <i>County Department of Secondary Roads</i> (County funds, Transportation facilities program funds, Building remediation funds) LOW PRIORITY
Bridges & Roads	Ida County	Carry over. <ul style="list-style-type: none"> · Collaborative project needed to develop west access point to City of Ida Grove to improve access to Keystone Ave wells. · Necessity of mapping of 387th is under consideration but is carried over to 2026 plan. · County shop south of town is needing access improvements – surface repairs. Grading/straightening is planned along 235th Street. Funding sources and responsibility remain as provided - <i>County Engineer, Collaboration with City Streets Dept.</i> (County funds, City support, transportation funds, FMA/Mitigation funds where applicable) MEDIUM PRIORITY
Bridges & Roads	Ida County	New. The County is looking to improve access to schools, particularly for young drivers. The following corridors are highly traveled gravel roads being programmed for paving. German Rd (one mile section to Hwy 20) and westward access roads including Lamp, Kastner, and Mueller. <i>Secondary Roads</i> (County funds, City collaboration where applicable, road use funds)
flow control		
Drainage projects	Ida County	Carry over. Areas of particular need of drainage ditch dredging include 7 th Street at Rowher, Jasper, and M15. Old Hwy 59 still needs attention. Project carries over to 2026 HMP with same priority. <i>County Engineer, Collaborate with City staff, IDNR</i> (County Roads funds, local general budget funds) HIGH PRIORITY

refuge		
Shelter	Ida County	New. Interested in adding storm shelter at Fairgrounds. Project is primarily limited by funding but will remain on priority list for consideration when updates and other investments are planned. <i>County Board, County EMA, Fair Board</i> (Mitigation program funds, local general budget /county funds, community safety programs, local foundation and betterment grants) MEDIUM PRIORITY
Shelter	Ida Co (w/Ida Grove)	New. Schmidt's Addition on 6 th in Ida Grove is a residential development without basements. Interest in establishing storm shelter in area. Location and scale of facility to be determined. May require preliminary study or project scoping to determine most effective option. <i>County EMA, County Board, Ida Grove City administration/Council, residents as applicable</i> (Community Safety funding opportunities, community foundation and/or betterment grants, local general budget funds) MEDIUM PRIORITY

technology		
Improve effectiveness	Ida County	New. Efforts will continue as opportunities become available. <i>County Board</i> (State/Federal connectivity programs as may be available, private-public partnerships) MEDIUM PRIORITY
natural barriers/supports		
Stabilization	Ida County	New. Spillway maintenance is ongoing and cumulatively expensive. County is interested in addressing channel stability with a long-term approach, reducing recurring expenses and substantiating infrastructure. Operations Supervisor, County Conservation. (Funding to be determined but will include county funds and pursuit of applicable grant programs) HIGH PRIORITY

JURISDICTIONS

1. ARTHUR

a. Profile

The City of Arthur lies on the eastern-most border of Ida County, and occupies 0.15 square miles. Highway 175 is the main road that connects Arthur to surrounding communities and runs east and west through the city. The city was named after the 21st president of the United States of America, Chester A. Arthur. City Council meets the first Monday of each month at 6:00 PM.

City Governance & Community Supports

Arthur is governed by a five-person elected city Council and the Mayor. Offices in addition to Mayor and Council include City Clerk and Superintendent. Arthur City has a volunteer Fire Department in place. The Department staff averages at about 13 members and is independent of the City. The city contracts with the county for law enforcement and emergency management coordination.

Demographics, Housing, & Economics

The town of Arthur has experienced significant growth, with its population rising to 295 in 2023⁴ as estimated by CensusReporter.org – up from 222 residents in 2020’s decennial census reports. The community is home to 140 households, and the median household income stands at \$53,750. However, approximately 17.5% of the population lives below the poverty line, highlighting some economic challenges within the town. Despite this, Arthur is a growing community with potential for further development and improvement as it continues to adapt to the needs of its residents.

Arthur has a total of 147 housing units, with 139 of them occupied, reflecting a strong demand for housing in the area. There are only 7 vacant units, indicating a low vacancy rate. The town has no mobile homes, and the majority of its homes were built after 2000, with a smaller portion constructed in the 1990s. Very few homes were built before 1990, indicating a relatively

⁴ Source: <https://censusreporter.org/profiles/16000US1903115-arthur-ia/>

new housing market in the town. These characteristics suggest that Arthur's housing infrastructure is modern, with a high occupancy rate and limited room for new development.

Leading Employers

Following employers include those in Arthur as well as regional employers that have a significant impact on community well-being.

- Flint Hills Resources (Ethanol Plant)
- Gomaco
- Midwest Industries
- Horn Memorial Hospital

Critical Facilities, Community Supports, Vulnerable Populations, Gathering Locations, & Local Areas of Interest

Town Hall; Fire Dept; Garage/Supplies	217 Main St
Library	224 S Main
Lift Station	Hwy 175 West
Well House	West End 2nd St
Water Tower	
City Park/Playground/Shelter House	
Recreation area & Related	

Valuation of City Assets

Building	\$	2,518,371
Personal Property	\$	199,788
Fine Arts	\$	4,120
Misc Property Unsched	\$	<u>200,452</u>
Total TIV	\$	2,922,731
APD TIV	\$	607,500
Grand Total TIV	\$	<u>3,530,231</u>

b. Participation

SIMPCO facilitated a mitigation planning meeting via phone conference with City Clerk Paul Arbergast on February 17, 2025. A signed Voluntary Participation Agreement is on file, dated 02/14/2025. Additional input was collected via survey with two respondents indicating Arthur as jurisdiction of residence.

On February 27, 2026, a final review was completed by Paul Arbergast. The review included providing corrections, acknowledging changes, and agreeing to adopt the Plan upon FEMA approval.

c. Community Capabilities

<i>Policies/Ordinance - updated 2017</i>	
<ul style="list-style-type: none"> • Building Code • Floodplain Ordinance • Nuisance Ordinance 	<ul style="list-style-type: none"> • Subdivision Ordinance • Tree Ordinance
<i>Programs</i>	
National Flood Insurance Program (NFIP) Participant	Yes, CID #190696A
ISO Fire Rating	Arthur - Class 8
Tree Trimming Program	Trim as needed
Mutual Aid Agreements	IMAC (in addition to county & planning region agreements)
<i>Staff/Department</i>	
NFIP Floodplain Administrator	City Mayor
<i>Local Funding Availability</i>	
Apply for Community Development Block Grants	
Authority to levy taxes for a specific purpose	
Fees for water, sewer, gas, or electric services	
Ability to incur debt through	<ul style="list-style-type: none"> • general obligation bonds • special tax bonds

Arthur participates in the NFIP program with the City Clerk serving as Floodplain Administrator. The city has zero RL/SRL properties.

Review of Actions Taken (Since 2019)

In addition to projects as updated below, Arthur added a mobile generator to enable continuation of operations of waterworks during power outages. The city added a warning siren in 2022 at the cost of approximately \$3,000.

communication /education		
tools/equipment		
Generator & Related Projects	Arthur	2020: Interest in a dedicated generator for the waterworks; <i>City Waterworks/Public Works Maintenance</i> (Local Funds, PDM, Community Benefits grants) HIGH PRIORITY
Generator & Related Projects	Arthur	Complete. A mobile generator was added in 2020 using safety funds through insurance provider. City accrued annual allocation to help meet expense.
Generator & Related Projects	Arthur	2020: Fire Dept - generator to maintain function of doors and building during a power outage; <i>Fire Chief, City Council</i> (Department funds, Community Benefit funds, Firefighter Association supports, PDM) HIGH PRIORITY
		Update. Project not completed due to lack of funds. Carry project into 2026 HMP. Department did attain mobile generator for use with the grass truck pump, but none are available for the facility. Priority based on likely funding opportunity, not need.
development		
flow control		
refuge		
technology		
natural barriers/ supports		

d. Risk Assessment

Contributing Factors

A review of the NOAA Storm Event database provides seven records specific to Arthur between 11/01/2019 and 12/31/2024.

<i>Location</i>	<i>Date</i>	<i>Time</i>	<i>Type</i>	<i>Mag</i>	<i>Dth</i>	<i>Inj</i>	<i>PrD</i>	<i>CrD</i>
ARTHUR	6/5/2020	1:02	Hail	1.00 in.	0	0	0.00K	0.00K
ARTHUR	8/10/2020	8:29	Thunderstorm Wind	56 kts. EG	0	0	1.00K	50.00K
ARTHUR	8/30/2021	21:02	Hail	1.75 in.	0	0	0.00K	0.00K
ARTHUR	8/30/2021	21:06	Hail	1.75 in.	0	0	0.00K	33.00K
ARTHUR	4/19/2023	18:52	Hail	1.00 in.	0	0	0.00K	0.00K

ARTHUR	6/16/2024	0:10	Thunderstorm Wind	65 kts. EG	0	0	0.00K	0.00K
ARTHUR	6/16/2024	0:10	Thunderstorm Wind	61 kts. EG	0	0	0.00K	9.00K

Arthur is met on its west and south boundaries with floodplain, including its lagoon location. Arthur Bioprocessing is located on the other side of the flood plain, though within the town’s planning area. Production and storage of ethanol and anhydrous ammonia present valid concerns of potential for hazardous materials incident.

Priority Hazards

- Tornado / Windstorm
- Flood – primarily flash flooding
- Thunderstorms with Hail & Lightning

Survey respondents also indicate Severe Winter Storm and Extreme heat as priorities.

e. Mitigation Needs, Actions, & Strategies

Snow removal is a challenge for this small community, with minimal equipment and limited funds to contract out the work.

communication /education		
Promo/Info	Arthur	New. Improve communications of existing programs and systems as available including but not limited to Alert Iowa, Increasing water intake during extreme heat and/or extreme dry conditions; water conservation (drought considerations); Red Flag warning awareness; Lightning safety, Snowstorm/Heavy snow safety, Tornado safety. These activities are intended to reduce risk of life and loss/damage to property. <i>City Clerk, County EMA (no funds needed)</i> HIGH PRIORITY
tools/equipment		
Generator & Related Projects	Arthur	Carry Over. Fire Dept - generator to maintain function of doors and building during a power outage; <i>Fire Chief, City Council (Department funds, Community Benefit funds, Firefighter Association supports, PDM)</i> LOW PRIORITY
development		
flow control		

refuge

technology

natural barriers/ supports

2. BATTLE CREEK

a. Profile

The City of Battle Creek is located on the west border, in Ida County's southwest quadrant. It occupies about 0.50 square miles. Highway 175 is the main road that connects Battle Creek to surrounding communities and runs northeast and southwest through the city. Maple River Flows south and east of city limits meeting Battle Creek northeast of the city. More information about Battle Creek on the city's website at <https://battlecreekia.org/>.

City Governance & Community Supports

Battle Creek is governed by a five-person elected council and Mayor. **City Council meetings are held the second Tuesday of each month at 6:00 PM.** Offices in addition to Mayor and council include City Clerk and Street Superintendent. The Battle Creek Volunteer Fire Department operates as a city department and staffs about 20 volunteers. There is a Battle Creek Fire Department Jr Firefighters program for teens 15 years of age and older. The city contracts with the county for law enforcement and emergency management coordination.

Demographics, Housing, & Economics

Estimates as compiled by CensusReporter.org indicate significant growth for Battle Creek with its population increasing to 882 in 2023⁵, from 700 residents in 2020. The community consists of 359 households, with a median household income of \$59,519, reflecting a moderate economic standing. Approximately 8.3% of the population lives below the poverty line, indicating some economic challenges within the community. Despite this, Battle Creek is a growing town with strong housing demand and opportunities for continued development and prosperity.

⁵ Source: <https://censusreporter.org/profiles/16000US1904870-battle-creek-ia/>

The town has a total of 418 housing units, with 334 currently occupied, reflecting steady residential use. A portion of the housing stock remains vacant, and mobile homes represent only a small share of the overall inventory. The majority of residents live in homes built since 2000, while a smaller number of homes were constructed in the 1990s or earlier. This suggests that the town’s housing market is relatively modern, with most structures being newer and offering potential for continued residential growth and stability.

Leading Employers

- Willow Dale Wellness Village
- Johnson Propane
- AgState
- Galva-Holstein School District (Holstein)
- VT Industries (Holstein)
- Gomeco (Ida Grove)
- Midwest Industries (Ida Grove)

Critical Facilities

Community Center/Library/City Hall	115 Main St
Maintenance/Ambulance Bldg; Storage Shed	408 1st St
Fire Station	Hwy 175 & Ida St
Police Station/Storage	504 1st St
Water Tower	605 7th St
Water Treatment Plant (North Wells)	502 Chestnut
Salt Shed	506 1st St
Storage Shed	403 Clara St
Treatment Plant/East Wells	100 1st St
Lift Station/Lagoon	
Warning Siren	405 1st St
Shelter	3rd & Center
Baseball Field	Hwy 175
Alumni Park	5th & Maple
Shelter House	603 5th St
Pool & Related Equip/Bldgs	Sec 26
East Park	

Community Supports, Vulnerable Populations, Gathering Locations, & Local Areas of Interest

First State Bank (closing 4/2026)	502 2 nd St
United Bank (opening April 2026)	500 2 nd St
Christensen-Huffman Funeral Home	608 4 th St
Presbyterian Church	600 3 rd Street
St. John's Lutheran Church	608 5 th Avenue
Fred's Place	106 Main St
Bread Box	104 Main St
BC Bakery	119 Main St
The Inn at Battle Creek (B&B)	201 Maple St
Crawford Creek Recreation Area	Co Rd L51 (Outside city limits)
Sparky's Convenience Store	660 1 st St
Nutrien Ag Solutions	701 1 st St

Valuation of City Assets

Total Blanket TIV	\$	4,555,919
Building	\$	4,078,639
Personal Property	\$	502,775
Misc Property Sched	\$	302,994
Misc Property Unsched	\$	<u>232,593</u>
Total TIV	\$	<u>5,117,001</u>

b. Participation

A mitigation planning meeting, facilitated by SIMPCO and Ida County EMA Ed Sohm, was held at Battle Creek City Hall on February 5, 2025 with the following in attendance.

- Charles Pierce, Mayor (as in office Feb 2025)
- Brian Scott, Public Works
- Jeanette Holmes, City Council
- Diane Lansink, City Clerk

In addition to the planning meeting, public input was collected by way of survey. Battle Creek was noted as jurisdiction of residence for 11 respondents.

A review of the Plan including updates and revisions was completed by City Clerk Diane Lansink and newly elected Mayor Jary Vermeys on February 26, 2026. Upon said review, the City of Battle Creek commits to adopting the plan once approved by FEMA.

c. Community Capabilities

<i>Policies/Ordinance</i>	
<ul style="list-style-type: none"> • Floodplain Ordinance • Nuisance Ordinance 	<ul style="list-style-type: none"> • Tree Trimming Ordinance • Zoning Ordinance
<i>Programs</i>	
National Flood Insurance Program (NFIP) Participant	CID #190423A
ISO Fire Rating	Class 6/6X
Planning/Zoning Board	
<i>Staff/Department</i>	
NFIP Floodplain Administrator	City Mayor
<i>Non-Governmental Organizations</i>	
Veterans Groups	Legion Post 364
Community Organizations	Lions Club Women's Club Medical Auxiliary
<i>Local Funding Availability</i>	
Authority to levy taxes for a specific purpose	
Fees for water & sewer	
Ability to incur debt through general obligation bonds	
Ability to incur debt through special tax bonds	

The Floodplain Ordinance references FIRM Panels 19093C0203C, 19093C0204C, 19093C02011C. The City of Battle Creek is a member of the NFIP program, though residents are known to be inactive under flood insurance. The Mayor serves as Floodplain Administrator. Battle Creek has zero RL/SRL properties. The city shares a few plans with the county such as Local/County Emergency Plan and County Recovery Plan.

Review of Actions Taken (Since 2019)

communication/education		
tools/equipment		
Equipment	Battle Creek	2020: Equipment updates and additions needed for Fire Department and Ambulance Services. <i>City Council, Fire Chief, Ambulance Director.</i> (Local funds, fundraisers, community benefit funds, firefighter association funding programs). HIGH PRIORITY
Equipment	Battle Creek	<p>Complete. The FD and Ambulance service added several pieces of equipment in recent years including:</p> <ul style="list-style-type: none"> • 2 grass rigs & tanker (\$275,000) – fundraisers, grants • Transfer switch for FD • Compressor to fill air cans • Power Cot (\$30,000) • New ambulance ordered – (\$287,000) fundraising, grants, service billings, donations
development		
Relocate critical facilities	Battle Creek	2020: Complications from 2019 flooding resulted in need for elevation of the city’s sewer lift station. <i>City Council, City maintenance/waterworks, collaboration with County EMA & Engineer as applicable.</i> (Local funds, PDM, Bonds/Loans through approved programs) HIGH PRIORITY
Relocate critical facilities	Battle Creek	Update. Project was not implemented but is still needed. No estimated timeline for completion as this is highly reliant on available funding sources. Project will carry into 2026 HMP.
flow control		
refuge		
technology		
natural barriers/supports		

The city completed a tree inventory in 2024 with removal of dead/diseased trees from rights of way in progress.

d. Risk Assessment

Contributing Factors

A review of the NOAA Storm Event database revealed one report specific to Battle Creek between 11/01/2019 and 12/31/2024. It can be expected that Battle Creek suffered the effected of Zone categorized events for both Ida and Woodbury Counties as well.

<i>Location</i>	<i>Date</i>	<i>Time</i>	<i>Type</i>	<i>Mag</i>	<i>Dth</i>	<i>Inj</i>	<i>PrD</i>	<i>CrD</i>
<u>BATTLE CREEK</u>	12/15/2021	16:42	Tornado	EF1	0	0	200.00K	0.00K

Priority Hazards

Planning committee discussion and survey response were aligned in determining the following as priority hazards.

- Tornado/Windstorm
- Severe Winter Storm
- Thunderstorm with Hail & Lightning

The committee further discussed severe implications locally from infrastructure failure including roadways, public works/waterworks, and railroad tunnels (coal concerns).

e. Mitigation Needs, Actions, & Strategies

communication/education		
Promo/Info	Battle Creek	New. Improve communications of existing programs and systems as available including but not limited to Alert Iowa, Increasing water intake during extreme heat and/or extreme dry conditions; water conservation (drought considerations); Red Flag warning awareness; Lightning safety, Snowstorm/Heavy snow safety, Tornado safety. These activities are intended to reduce risk of life and loss/damage to property. <i>City Clerk, County EMA (no funds needed) HIGH PRIORITY</i>
tools/equipment		
Generator & Related Projects	Battle Creek	New. Transfer switches are need for critical facilities including: Community Center, City Shed/Ambulance Shed, Lift Station, wells. This meets minimum needs in power outages enabling use of mobile generators available through county or private entities. <i>City Council, County EMA (Local general budget funds, PDM, public safety funds as may be available, community benefit funds) HIGH PRIORITY</i>
Generator & Related Projects	Battle Creek	New. Dedicated generator for lift station &/or wells. One mobile available but insufficient if several systems are cut from power. Primary use is for wells. Estimated cost \$50,000. <i>City Council, County EMA (Local general budget funds, PDM, public safety funds as may be available, community benefit funds) HIGH PRIORITY</i>
Equipment	Battle Creek	New: New radios and operating system is needed. City needs communications improvements to better accommodate mutual aid calls. Current system does not connect with Woodbury County (on a state system) which is problematic for regional and mutual aid needs. Cost estimate not readily available. <i>County EMS/EMA, FD, City Council (Local</i>

		funds general budget , PDM, public safety systems, county funds as may be applicable) HIGH PRIORITY
development		
Relocate critical facilities	Battle Creek	Carry over. Project was not implemented but is still needed. No estimated timeline for completion as this is highly reliant on available funding sources. Past flood issues resulted in need for elevation of the city’s sewer lift station. As flooding events become more frequent and more extreme, project becomes more dire. <i>City Council, City maintenance/waterworks, collaboration with County EMA & Engineer as applicable.</i> (Local general budget funds, PDM, Bonds/Loans through approved programs) HIGH PRIORITY
flow control		
refuge		
technology		
natural barriers/supports		

3. GALVA

a. Profile

The City of Galva is situated on the northeastern-most border of Ida County and occupies 0.71 square miles. The City lies about two miles north of highway 20, which is the main road that connects to neighboring communities and runs east/west.

City Governance & Community Supports

Galva is governed by a five-person elected Council and the Mayor. Offices in addition to Mayor and Council include City Clerk/Treasurer, Maintenance Supervisor, and City Attorney. The Galva Volunteer Fire Department is **managed through the Galva Fire Board**, independent from the city, and staffs about more than 20 volunteers. The city contracts with the county for law enforcement and emergency management coordination.

The City of Galva is a member of the NFIP program, though residents are known to be inactive under flood insurance. The city is covered by plans from the county such as Local/County Emergency Plan and County Recovery Plan. Local and area plans as applicable to Galva are itemized under Community Capabilities.

Demographics, Housing, & Economics

In 2023, the town of Galva had an estimated population⁶ of 432, showing a slight decline from 435 residents in 2020. The community includes 142 households and reports a median household income of \$70,714, which is relatively strong. However, despite the higher income level, about 20.6% of residents live below the poverty line, indicating a significant level of economic disparity.

Data sources provide that Galva has a total of 168 housing units, with 143 currently occupied and 25 vacant. **Local records reflect a vacancy rate of less than 10 at any given time over the past two years.** The town includes a small number of mobile homes, totaling five units. Most residents have moved into their homes since the year 2000, while a smaller number settled in during the 1990s or earlier, showing a blend of newer and more established households in the community. **Recent community development has increased the number of homes in the community by two.**

Leading Employers

While not hosting a large number of employees, the following businesses, and those as listed under Community Supports, operate and have established a necessary presence in Galva.

Quad County Corn Processors	300 E Third St
Rod's Fertilizer	117 Main St
Galva-Holstein School District	519 E Maple St, Holstein

Critical Facilities

City Hall	116 S Main
City Park/Shelter & Equipment	300 Crawford St
Water Pump House #1	107 N Main
Wastewater Plant	
Lift Station	120 N Main
Water Tower	Noll St
Library	203 S Main

⁶ Source: <https://censusreporter.org/profiles/16000US1929595-galva-ia/>

Community Supports, Vulnerable Populations, Gathering Locations, & Local Areas of Interest

US Post Office	2nd and Main
Galva-Holstein 3rd-5th Grade School	207 Noll St.
Galva Economic Development Corporation	1681 Market Ave
United Bank of Iowa	102 Main St
St. John’s Lutheran Church	406 Monona St
Legion Hall	

Valuation of City Assets

A current valuation of assets has not been made available. The city will include a valuation as part of cost–benefit analysis should they pursue funding through a mitigation program. It is understood that such assessment will be specific to a given project and may not represent protections or sustainability improvements to the community as a whole.

b. Participation

Facilitated by SIMPCO, a virtual meeting via Teams was conducted on December 12, 2024 at 11AM with Vanessa Harder, City Clerk in attendance. While 28 respondents of the survey were from Ida County, none indicated Galva as residence. Concerns noted as contributing factors are reflected under Priority Hazards.

A follow up review was completed with the City Clerk on March 26, 2026, including additional information, acknowledgement of changes, and commitment to adopt upon FEMA approval.

c. Community Capabilities

<i>Policies/Ordinance</i>	
• Building Code	• Subdivision Ordinance
• Floodplain Ordinance	• Tree Trimming Ordinance
• Nuisance Ordinance	• Zoning Ordinance
<i>Programs</i>	
Planning/Zoning Boards	

Zoning/Land Use Restrictions	
National Flood Insurance Program (NFIP) Participant	CID #190424A
ISO Fire Rating (served by independent fire dept)	Galva - Class 6; Galva TS FPSA 1 & 2 Class 9/10
Mutual Aid Agreements	IMAC (in addition to County-wide & Regional agreements)
<i>Staff/Department</i>	
NFIP Floodplain Administrator	role assumed by the City Mayor
<i>Non-Government Organizations</i>	
Galva Economic Development Corp	
<i>Local Funding Availability</i>	
Authority to levy taxes for a specific purpose	
Fees for water, sewer, gas, or electric services	
Ability to incur debt through general obligation bonds	
Ability to incur debt through special tax bonds	
Ability to withhold spending in hazard prone areas	

Among community supports, the Galva City Committee has disbanded and turned over any left-over funding to the Galva Economic Development Corp to use for Shelter House repairs as well as future street bands/town celebrations.

The city participates in the NFIP program with the Mayor serving as Floodplain Administrator. Galva has zero RL/SRL properties.

Review of Actions Taken (Since 2019)

Galva had several projects identified in the 2020 Regional Plan. Following is an update to each project as included.

communication/education		
Promo/Info	Galva	2020: Need for secured gate and "Restricted" signage at the sewer plant; <i>City Maintenance/Public Works</i> (Local Funds, Community benefit grants) HIGH PRIORITY
Promo/Info	Galva	Update (In progress): Galva is in the process of implementing a Sewer systems project. Securing point of access is part of the project.
Promo/Info	Galva	2020: Interest in obtaining weather radio and additional communications equipment such as handheld radios for direct communication with responders; <i>City Council, County EMA to assist</i> (local funds, PDM funds, Community benefit grant funds) MEDIUM PRIORITY

		Update: Handheld radios are not in place.
tools/equipment		
development		
Improve existing facilities & infrastructure	Galva	2020: Wastewater Plant upgrades are pending response from Iowa DNR. <i>City Council, IDNR</i> (IDNR program funds, City funds, State/federal loan programs) HIGH PRIORITY Substantially Completed . Anticipated project closure Feb 2025. Project costs not provided.
flow control		
refuge		
technology		
natural barriers/supports		

In addition to planned and anticipated projects, the city initiated some actions to address tree population changes as affected by the Ash Borer Beetle. The city implemented an urban tree maintenance plan for city properties in 2024 that includes a fee collection beginning 1/1/2025. This program enables monitoring and removal of dead/diseased trees and replacement of trees in parks and other public greenspaces. As a nuisance prevention measure, trees will not be replaced in parking.

d. Risk Assessment

Contributing Factors

Record of storm events as tracked in the NOAA database (11/01/2019 – 12/31/2024) include the following incidents directly affecting Galva. In addition to these occurrences, those indicated in the county profile under Ida (Zone) generally affect all communities within the county. Such events include but are not limited to various winter weather conditions, drought, and high winds. Details on these and other storm events as recorded can be accessed online at <https://www.ncdc.noaa.gov/stormevents/>.

<i>Location</i>	<i>Date</i>	<i>Time</i>	<i>Type</i>	<i>Mag</i>	<i>Dth</i>	<i>Inj</i>	<i>PrD</i>	<i>CrD</i>
GALVA	5/2/2021	19:37	Hail	0.88 in.	0	0	0.00K	2.00K
GALVA	12/15/2021	16:58	Tornado	EFO	0	0	75.00K	0.00K
GALVA	4/23/2022	5:10	Thunderstorm Wind	52 kts. EG	0	0	0.00K	0.00K
GALVA	5/30/2022	5:40	Thunderstorm Wind	61 kts. EG	0	0	0.00K	0.00K

GALVA	5/30/2022	5:40	Thunderstorm Wind	61 kts. EG	0	0	0.00K	0.00K
GALVA	5/30/2022	5:42	Thunderstorm Wind	61 kts. EG	0	0	0.00K	0.00K

Community condition and features affect Galva’s resiliency during natural disasters and other events. While not necessarily a mitigation project, roadway maintenance does directly affect function of and access to/from city operations. As indicated under the County profile, road maintenance is a considerable ongoing expense exacerbated by extreme weather events. Within and extending from Galva city limits, the county completed a seal coating project on M25/Main Street, completing scheduled segments on an annual basis. Galva’s 6th Street is undergoing stage 3 of a curb gutter improvements project.

Other local improvements since 2019 include a new wastewater plant that better serves the needs of the community. These investments contribute to operational function as a city. Mitigation projects are intended to protect these and future investments.

Priority Hazards

Galva’s priority natural disaster concerns are consistent with those identified in the 2020 HMP as well as the record of recent events.

- Thunderstorms w/Hail & Lightning
- Tornado/Windstorm
- Severe Winter Storm

e. Mitigation Needs, Actions, & Strategies

communication/education		
Promo/Info	Galva	Carry over. City intends to continue seeking funds to implement project. Obtain weather radio and additional communications equipment such as handheld radios for direct communication with responders; <i>City Council, County EMA to assist</i> (local general budget funds, PDM funds, Community benefit grant funds) MEDIUM PRIORITY
Promo/Info	Galva	New. Improve communications of existing programs and systems as available including but not limited to Alert Iowa, Increasing water intake during extreme heat and/or extreme dry conditions; water conservation (drought

		considerations); Red Flag warning awareness; Lightning safety, Snowstorm/Heavy snow safety, Tornado safety. These activities are intended to reduce risk of life and loss/damage to property. <i>City Clerk, County EMA</i> (no funds needed) HIGH PRIORITY
tools/equipment		
development		
Improve existing facilities & infrastructure	Galva	New. City Hall façade improvements are in the planning stages. Estimated cost is \$25,000, which will in part substantiate building integrity. <i>City staff, contracted services as applicable.</i> (Local general budget funds) HIGH PRIORITY
Improve existing facilities & infrastructure	Galva	New. Shelter House and other City Park improvements. Project includes improved respite from excessive heat and from intermittent inclement weather. Estimated cost \$80,000. <i>City staff, contracted services as applicable.</i> (Galva Economic Development Corp funds, community betterment funds, fundraisers, Galva Economic Development Corporation) HIGH PRIORITY
flow control		
refuge		
technology		
natural barriers/supports		

4. HOLSTEIN

a. Profile

The city of Holstein lies north of center in Ida County, and occupies 1.58 square miles. The City of Holstein remains the second most largest city in Ida County regarding population size and spatial area. US Highways 20 and 59 intersect at the southern portion of the city with US-59 traversing north/south through the center of town.

City Governance & Community Supports

Holstein is governed by a five-person elected council and the Mayor. Offices in addition to Mayor and Council include Deputy Clerk, City Administrator, Public Works, water superintendent, and Chamber of Commerce. The Holstein Fire and Ambulance departments are combined. Two positions lead the Ambulance and Fire Department including the Fire Chief and Ambulance Coordinator. The Department averages about 27 volunteer firefighters. In collaboration with school district trades and career readiness programs, the department may

at any time include juniors and/or cadets. Volunteer positions in general include Emergency Medical Technicians (EMT), Emergency Medical Technicians Advanced (EMTA), and Paramedics.

Governing ordinances, documents, policies, and programs are included in the Community Capabilities portion of this profile.

Demographics, Housing, & Economics

In 2023, the city of Holstein had an estimated population⁷ of 1,552, reflecting modest growth from 1,501 residents in 2020. The community is made up of 646 households and has a median household income of \$61,625. Despite a relatively stable economic profile, about 14.7% of residents live below the poverty line, indicating that some households still face financial challenges.

Holstein has a total of 686 housing units, with 644 currently occupied and 41 vacant. The housing stock includes a small number of mobile homes, with seven in total. Most residents have moved into their homes since 2000, while others have been in their homes since the 1990s or earlier. This mix of newer and longer-term residents reflects a stable and evolving community.

Leading Employers

The following businesses, in addition to those as included in Community Supports listing, operate and/or have established a necessary presence in Holstein.

- V.T. Industries
- Galva Holstein Community School
- First Cooperative
- Good Samaritan Center

Critical Facilities

City Hall; Warning Siren	119 S Main St
Lohff-Schumann Memorial Community Center	301 Lohff-Schumann Dr
Maintenance Office	420 N Main St

⁷ Source: <https://censusreporter.org/profiles/16000US1936840-holstein-ia/>

Stubbs Memorial Library	207 E 2nd St,
Sports Complex & Related	
City Park	
Park/Bathhouse & Related	621 S Kiel St
Water Treatment	109 S Kiel St
Wells and Related	
Sand & Equip Storage	
Wells; Control Bldgs	Hwy 20
Water Tower	E Railroad St
Lift Station	302 N Main St
Sewage Lift Station	E 2nd St
Lagoon Lift & Related monitoring equip	German Ave
East Lift Station	11 N Lubeck

Community Supports, Vulnerable Populations, Gathering Locations, & Local Areas of Interest

US Post Office	121 E 2nd St
Ida County Economic Development	101 N Main St
Ridge View High School	519 East Maple St
Galva – Holstein Elementary School	
Little Raptors Daycare and School	
Good Samaritan Society	505 W. 2nd St
Holstein Senior Living (Assisted & Independent)	1500 S Kiel St
AmVets Legion Hall	
Masonic Hall	118 N Main St
Veterans Memorial Hall	121 N Main St
Douglas School (@ Douglas County School Grounds)	135 Union Ave (north & west outside city limits)
Holstein Golf Course	400 Kofmehl Dr
Holstein Country Club	
Holstein Supermarket	109 E 1st St
United Bank of Iowa	116 N Kiel St
St. Paul Lutheran Church	310 E Second St
CrossRidge Evangelical Free Church	Lohff-Schumann Dr
United Methodist Church	208 S Kiel St

Valuation of City Assets

In addition to project updates, the city has invested in several downtown renovations, supporting local property owners through Iowa EDA’s Community Catalyst program. Providing in-kind waivers for permits and technical support through architectural plans, Holstein is providing a pathway to improvements, investing not only in public infrastructure but also facilitating private investment.

Based on the city’s property schedule statement of value, the city’s valuation of assets is \$9,283,300. This total includes but is not limited to property, facilities, building contents, vehicles, and machinery. This calculation provides a base value for cost-benefit analysis for mitigation projects likely to impact the whole city. This does not represent private properties/assets. A more in-depth review of affected properties will be conducted specific to projects that may qualify for pre-disaster or mitigation funding.

b. Participation

In an in-person planning meeting was conducted at Holstein City Hall on August 6, 2024. The meeting was facilitated by SIMPCO with Tammy Nuckolls, City Administrator in attendance. Of the 28 Ida County responses to the survey, none indicated Holstein as residence.

c. Community Capabilities

<i>Plans/Guidance Documents</i>	
<ul style="list-style-type: none"> Comprehensive Plan Capital Improvement Plan 	<ul style="list-style-type: none"> Land Use Plan
<i>Policies/Ordinance - recodification in progress (@ time of planning meeting)</i>	
<ul style="list-style-type: none"> Nuisance Ordinance Subdivision Ordinance 	<ul style="list-style-type: none"> Tree Trimming Ordinance Zoning Ordinance
<i>Programs</i>	
Zoning/Land Use Restrictions	
National Flood Insurance Program (NFIP) Participant	CID #190593A
ISO Fire Rating	Class 6
Planning/Zoning Boards	

Tree Trimming Program	
Mutual Aid Agreements	IMAC (in addition to County-wide & Regional agreements)
<i>Staff/Department</i>	
Engineer – contracted (ISG)	
Public Works Official	
Emergency Response Team	Fire and Ambulance Department
<i>Non-Governmental Organizations</i>	
American Legion/AmVets	
Community Organizations	<ul style="list-style-type: none"> • Holstein Betterment Alliance • Holstein Chamber of Commerce • Holstein Development Authority
<i>Local Funding Availability</i>	
Ability to apply for Community Development Block Grants	
Authority to levy taxes for a specific purpose	
Fees for water, sewer, gas, or electric services	
Ability to incur debt through	<ul style="list-style-type: none"> • general obligation bonds • special tax bonds • private activities

The city participates in the NFIP program with the City Administrator serving as Floodplain Administrator. Holstein has zero RL/SRL properties.

Review of Actions Taken (Since 2019)

communication/education		
Warning Sirens	Holstein	2020: Additional warning siren would benefit City - potential location near south end of town near CharMac, Ridgeview, Cobblestone Inn; <i>City Council, County EMA</i> (Local funds, County supports, State/Federal response funds, PDM, Community Benefits funds) MEDIUM PRIORITY
Warning Sirens	Holstein	Update. Project carried over to 2026 Plan as siren is still needed. Community will continue to review grant and funding support opportunities as well as assess feasibility of fundraising to boost local fund options. Expected cost is in excess of \$15,000. Project will maintain MEDIUM PRIORITY.
tools/equipment		
Generator & Related Projects	Holstein	2020: Permanent, dedicated generators @ lift stations & water plant; <i>City Council, County EMA</i> (Local funds, County supports, State/Federal response funds, PDM, Community Benefits funds) HIGH PRIORITY

Generator & Related Projects	Holstein	Update: The City has received quotes to initiate the project. Planned cost is \$197,000. Support funding has not been secured. This carries over into the project list for the 2026 Plan.
Equipment	Holstein	2020: Additional snow removal equipment; <i>City Council, Public Works/Maintenance</i> (Local funds) LOW PRIORITY
Equipment	Holstein	Completed (pending delivery). Equipment has been purchased but item is on backorder. Expected availability May 2025.
Equipment	Holstein	Implemented (pending delivery). City has ordered an ambulance. Cost not provided. City council, Emergency Services. (Local funds, fundraising).
development		
flow control		
Drainage projects	Holstein	2020: Sidewalk trail at ball field and rec center with drainage project incorporated; <i>City Administration, Contracted services, County collaboration for trail projects</i> (Health & Wellness funds, Transportation Alternatives funds, Local funds, fundraisers, Walk/Bike program funds) LOW PRIORITY
Drainage projects	Holstein	Update. No work has been done to date. Project is still needed, but remains low priority due to lack of readily available funding supports.
refuge		
technology		
natural barriers/supports		
Stabilization	Holstein	2020: Drainage projects to stabilize dirt in areas prone to washout; <i>City Maintenance/Streets</i> (Local funds, PDM) HIGH PRIORITY
Stabilization	Holstein	Update: Carry over. Efforts are ongoing with consideration being given to more long-term solutions. Determination of such action has not been made. Project will carry to 2026 Plan, retaining HIGH PRIORITY.
Stabilization	Holstein	2020: Substantiate barriers @ gateway to community; <i>City administration, County Engineer, EMA</i> (Local funds, County funds, PDM, Community benefit grant funds) HIGH PRIORITY
Stabilization	Holstein	Project closed. No update on this activity is available. Community is not intending further action on this project at this time.

d. Risk Assessment

Contributing Factors

Holstein is working on updating its Local Emergency Operations Plan and establishing a chain of command to be implemented in the event of a disaster. Also under consideration is the designation of a warming/storm shelter to reduce risk of exposure to residents during extreme weather events, especially during power outages. Another factor in assessing the community's capacity to prepare for and withstand disaster is the inclusion of monitoring cameras at the city pool, providing an extra level of security should an incident take place. The city has a local newsletter accessible by all residents which is often used to communicate public service

information including but not limited to disaster preparedness and promotion of subscribing to emergency notification services (such as Alert Iowa).

A review of the NOAA Storm Event database provided two incident reports specific to Holstein between 11/01/2019 and 12/31/2024 as shown in the following table. Additional detail can be found at the online NOAA website at <https://www.ncdc.noaa.gov/stormevents/> or by clicking the embedded link in the table.

<i>Location</i>	<i>Date</i>	<i>Time</i>	<i>Type</i>	<i>Mag</i>	<i>Dth</i>	<i>Inj</i>	<i>PrD</i>	<i>CrD</i>
HOLSTEIN	5/12/2022	18:40	Thunderstorm Wind	70 kts. EG	0	0	0.00K	0.00K
HOLSTEIN	6/23/2024	4:00	Flood		0	0	0.00K	0.00K

Notably, 85 Ida County *Zone* events as recorded are also considered for reference (see Ida County profile for details).

Priority Hazards

Consistent with recorded storm events, Holstein has identified the following as priority hazards.

- Tornado/Windstorm
- Severe Winter Storm
- Thunderstorm w/Hail & Lightning

Flash flooding as prevalent during heavy rain events is a matter of some concern. However, such events have not resulted in disruption of services within the community nor have they incurred notable damages. It is important to note that Holstein’s proximity to the US 20 corridor brings additional consideration of transportation and hazardous materials incidents. Local amenities are impacted during extreme weather events with potential influx of visitors who may otherwise just be passing through.

e. Mitigation Needs, Actions, & Strategies

Following are Holstein’s strategies to reduce the impacts of natural disasters and other hazards.

communication/education		
Promo/Info	Holstein	New. Improve communications of existing programs and systems as available including but not limited to Alert Iowa; Water conservation; Increasing water intake during extreme heat and/or extreme dry conditions; Red Flag warning awareness; Lightning safety, Snowstorm/Heavy snow safety, Tornado safety. These activities are intended to reduce risk of life and loss/damage to property. City Clerk, County EMA (no funds needed) HIGH PRIORITY
Warning Sirens	Holstein	Carry over. Project carried over to 2026 Plan as siren is still needed. Community will continue to review grant and funding support opportunities as well as assess feasibility of fundraising to boost local fund options. Expected cost is in excess of \$15,000. Additional warning siren would benefit City - potential location near south end of town near CharMac, Ridgeview, Cobblestone Inn; City Council, County EMA (Local general budget funds, County supports, State/Federal response funds, PDM, Community Benefits funds) MEDIUM PRIORITY
tools/equipment		
Generator & Related Projects	Holstein	Carry over. Permanent, dedicated generators @ lift stations & water plant. The City has received quotes to initiate the project. Planned cost is \$197,000. Support funding has not been secured. Anticipated for completion in 026/2027 fiscal year. City Council, County EMA (Local general budget funds, County supports, State/Federal response funds, pre-disaster/mitigation funds as available, Community Benefits funds) HIGH PRIORITY
development		
flow control		
Drainage projects	Holstein	Carry over. Sidewalk trail at ball field and rec center with drainage project incorporated; City Administration, Contracted services, County collaboration for trail projects (Health & Wellness funds, Transportation Alternatives funds, Local funds, fundraisers, Walk/Bike program funds) LOW PRIORITY
Drainage projects	Holstein	New. Drainage system improvements on Benning Dr anticipated for bid Spring 2026. Public Works (General budget, PDM as may be applicable.) HIGH PRIORITY
refuge		
technology		
natural barriers/supports		
Stabilization	Holstein	Carry over. Drainage projects to stabilize dirt in areas prone to washout; Efforts are ongoing with consideration being given to more long-term solutions. Determination of such action has not been made. City Maintenance/Streets (Local general fund, PDM) HIGH PRIORITY

5. IDA GROVE

a. Profile

The City of Ida Grove is situated slightly south and center of Ida County, and occupies 2.2 square miles. Highway 175 and Highway 59 travel east and west through the northern part of Ida Grove. Maple River runs through the east and north borders of the Ida Grove. Currently the Chicago

and Northwestern Railroad travels through the center of the city, carrying product for commerce.

City Governance & Community Supports

Ida Grove is governed by a six-person elected council including the Mayor. City staff and supports include:

- City Clerk
- Deputy Clerk
- Administrative Assistant
- Library Director
- Librarian & Library Assistant
- Parks Superintendent
- Recreation Center Director
- Wastewater Superintendent
- City Crew & Foreman
- City Attorney

Ida Grove also has a Planning and Zoning Commission, Board of Adjustment, Tree Board, and several standing committees. The Ida Grove Volunteer Fire Department consists of about 25 firefighters. Ida Grove Fire Department is funded by a combination of township fire fees, city funding, and donations. The city takes part in the enhanced 911 system through the Ida County Communications Center.

The Ida Grove Ambulance service is voluntary averaging 19 crewmembers. The facility is staffed 24 hours a day, seven days a week. Ida Grove Ambulance Service response to emergencies in Ida Grove and surrounding areas. The department also provides emergent transfers from the local hospital to higher levels of care. The City of Ida Grove is a member of the NFIP program, though residents are known to be inactive under flood insurance. A Comprehensive Plan and CIP were reviewed in 2019 (estimated).

Demographics, Housing, & Economics

In 2023, Ida Grove's estimated population⁸ decreased from 2,051 residents in 2020 to 1,904. The city is home to 901 households and has a median household income of \$63,194. With a poverty

⁸ Source: <https://censusreporter.org/profiles/16000US1938010-ida-grove-ia/>

rate of 8.4%, a relatively small portion of the population lives below the poverty line, suggesting a generally stable economic environment for most residents.

Ida Grove has 1,094 housing units in total, with 897 of them occupied and 197 vacant. The town has a small portion of mobile homes within its housing stock. A large majority of residents have moved into their homes since 2000, while a smaller number have settled in during the 1990s or before, reflecting a blend of newer and older residences across the community.

Leading Employers

The following businesses operate and have established a necessary presence in Ida Grove.

- Gomaco
- Midwest Industries
- Horn Memorial Hospital
- Odebolt Arthur-Battle Creek Ida Grove Community School District
- UBI

Critical Facilities

City Hall	403 Third St
Fire Station	409 1 st St
Library & Related, etc.	103 E 2 nd St
Water Tower; Water Dept Related	100½ 7th St
Lift Station	88½ E Hwy 175
Lift Station	E Hwy 175
Lift Station	800 Walnut St
Maintenance Bldg (Streets)	1200 1 st St
Wastewater Treatment Plant & Related Sewer Works	
Treatment Plant & Related; Wells	2375 Keystone Ave
Badger Creek Lift Station	206 Rohwer St
Zobels Lift Station	811 S Main
Moorehead Lift Station	100 Moorehead Ave
Hilcrest Lift Station	465½ Pin Oak

Oak Grove Lift Station	200½ Susan Lawrence
Pump House	403 Iowa St
Various Parks, Walking Trail & Related	
Baseball Facility & Related	901 John Montgomery Drive
City Park & Related	207 Washington St
Parks Dept, Misc	10 Washington St
Swimming Pool & Related Bldgs/Equip	101 E 2 nd St
Pool & Related Bldgs, Equip	101 Barnes St
Municipal Airport	Office & related Bldgs
Rec Center/Indoor Pool	311 Barnes St
Castle Battlement	US 59 & Harold Godberson Dr
Zobels Park	Main St & Badger Creek Dr

Community Supports, Vulnerable Populations, Gathering Locations, & Local Areas of Interest

OABCIG Elementary School	Ida Bowl
OABCIG High School	Ida Grove Golf and Country Club
Cobb Memorial Park	Ida Grove Skate Palace
Dewey's Bar & Grill	King Theatre
The Farmacy	Moorehead House Museum
Food Pride	Moorehead Park
Gathering Place (Event Venue)	Taco Island
Golden Horizons	Zimmy's Bar & Grill
Horn Memorial Hospital	

Valuation of City Assets

Using Ida grove's ICAP policy effective through 2025, the city's base property valuation is \$26,187,926. This dollar amount sets estimated foundation for cost-benefit analysis for projects that mitigate a given disaster or other hazard that may affect the community as a whole. Complete reconstruction of City Hall was completed within the last few years removing accessibility barriers and addressing structural concerns. The new structure increases the city's base valuation and provides an additional safe space in the event of disasters or other emergency conditions.

Road infrastructure including but not limited to overlay and bridges, is not included in the valuation, nor is any private property or county facilities. A specified valuation of properties, facilities, and infrastructure within an given area of potential effect will be included in cost-benefit analysis for all projects submitted for funding requests.

b. Participation

An in-person planning meeting was held in Ida Grove on October 7, 2024. SIMPCO facilitated the meeting with the following city staff in attendance.

- Heather Sweeden, City Clerk
- Kelly Young, Deputy City Clerk
- Gerrod Sholty, Crew Foreman

The above meeting attendees included representation of interests and comments from city councilmembers. Ida Grove Councilmembers bring stakeholder involvement not only as residents and elected officials, but as professionals in local organizations and industry. Businesses specifically identified include GOMACO and Hawkeye Fabrication.

Of 28 surveys collected for Ida County, 15 indicated Ida Grove as respondent’s residence. Compiled results regarding concerns related to natural disasters and other hazards are included for discussion under the community Risk Assessment section of this profile.

A final review of the Plan was completed by the City Clerk on February 25, 2026. Upon review, the City has acknowledged changes included since their last input meeting and has confirmed agreement to adopt the plan once approved by FEMA.

c. Community Capabilities

In addition to County, Region, and State supports, the city has the following resources in place.

<i>Plans/Guidance Documents</i>
Comprehensive Plan

Capital Improvement Plan	
<i>Policies/Ordinance</i>	
<ul style="list-style-type: none"> • Building Code • Ditch Maintenance (including restrictions) • Floodplain Ordinance • Nuisance Ordinance 	<ul style="list-style-type: none"> • Subdivision Ordinance • Tree Trimming Ordinance • Zoning Ordinance
<i>Programs</i>	
Zoning/Land Use Restrictions	
National Flood Insurance Program (NFIP) Participant	CID #190156A
ISO Fire Rating	Ida Grove FD – Class 4/4Y
Planning/Zoning Boards	
Tree Trimming Program	
Mutual Aid Agreements	Fire; IMAC (in addition to County and Region agreements)
<i>Staff/Department</i>	
Emergency Response Team	Fire and Ambulance Department
<i>Non-Governmental Organizations</i>	
Veterans Groups	
Chamber of Commerce	
Ida Grove Economic Development	
Ida County Economic Development	
Community Organizations	<ul style="list-style-type: none"> • Kiwanis • Ida Grove Community Foundation • Ida Grove Community Partners
<i>Local Funding Availability</i>	
Ability to apply for Community Development Block Grants	
Ability to fund projects through Capital Improvements funding	
Authority to levy taxes for a specific purpose	
Fees for water & sewer services	
Ability to incur debt through general obligation bonds	

The city participates in the NFIP program with the City Clerk serving as Floodplain Administrator. Ida Grove has zero RL/SRL properties. The city’s floodplain ordinance was updated and adopted on May 11, 2022 by Ordinance 606 when new FIRMs were completed. The new FIRMs were effective 6/1/2022 and include the following panel numbers:

- 19093C0226C
- 19093C0227C
- 19093C0228C
- 19093C0229C
- 19093CIND0A (this is the FIRM / map index)

Active in community betterment efforts, the city’s numerous actions are discussed by heading throughout this profile. Ida Grove is implementing several other strategies that reduce the risk to property and lives of its residents and visitors in the event of natural disasters. Among existing and planned actions are:

- continued use of AlertIA for boil advisories and other emergency information; program registration is promoted routinely through city website and Facebook.
- tightening of enforcement on abandoned and dilapidated buildings, including adoption of building code and property maintenance standards (SUDAS, IBC, IPMC) by reference,
- maintaining city code updates annually to address changes at the state level
- continue efforts to maintain dead and diseased trees with 300 trees scheduled for removal in city right-of-way (funding needed)
- replacement of trees in parks and public greenspace at the rate of about 20 per year over 5 years (grant received)

Review of Actions Taken (Since 2019)

The following table provides updates to projects as identified in 2020. Other efforts to improve disaster preparedness includes some work toward hydrant assessments and replacement to optimize functionality and capacity.

communication/education		
tools/equipment		
Generator & Related Projects	Ida Grove	2020: Transfer switches at all critical facilities to enable use of generators; Generators @ Critical Facilities including Waste Water Plant; <i>City Council, County EMA</i> (Local funds, County supports, State/Federal response funds, PDM, Community Benefits funds) HIGH PRIORITY
Generator & Related Projects	Ida Grove	Partially completed. Water Tower and Well Site improvements included necessary connections. Odebolt Creek Lift Station is ready for portable

		connection. Water Plant updates included a transfer switch and plumbing of gas lines (\$30,000). A generator has not been purchased for the water treatment facility. That and additional connections and generators are still needed and project will carry into 2026 Plan.
Equipment	Ida Grove	2020: Snow removal equipment needs updating. <i>City Streets Department</i> (City funds) LOW PRIORITY
Equipment	Ida Grove	Update. Action not taken. Project still needed. Carry to 2026 plan. Carry over. City in need of small tractor with can and blower on front to facilitate and improve snow removal. <i>City Streets Department</i> (City general funds) LOW PRIORITY
Equipment	Ida Grove	2020: Motor in the grader needs updating. <i>City Streets Dept</i> (City funds) MEDIUM PRIORITY
Equipment	Ida Grove	Completed. Motorgrader replaced in 2022.
Equipment	Ida Grove	2020: Larger capacity pump; <i>Public Works, Streets Dept</i> (City Funds, PDM, Community Benefit funds) HIGH PRIORITY
Equipment	Ida Grove	Update. Action not taken. Project still needed. Carry to 2026 plan. Carry over. large pump our 4" gas powered pump needs replaced. <i>Wastewater dept.</i> (Loca general fund) HIGH PRIORITY.
Equipment	Ida Grove	2020: New booster pump is needed to support fire hydrant performance. <i>Fire Chief, City Administrator</i> (City funds, Fire Dept funds, Response support funds) MEDIUM PRIORITY
Equipment	Ida Grove	Action not reported. Project is removed from the priority list.
development		
Improve existing facilities & infrastructure	Ida Grove	2020: Casements along 7th St (Badger Creek); <i>City Roads Dept, collaborate with County Engineer</i> (City funds, IDOT Program funds, PDM) HIGH PRIORITY
		Update: Still needed. Action not taken due to lack of dedicated funding. Continues to be a very big issue. Cost estimates around \$200,000 for mitigation.
Improve existing facilities & infrastructure	Ida Grove	2020: Full renovation of City Hall & attached community center/senior center, starting with roof. City project Manager, Council (Community Catalyst Building Remediation funds, Private funds, City funds, Connections Area Agency on Aging, AARP Healthy Communities funds) MEDIUM PRIORITY
Improve existing facilities & infrastructure	Ida Grove	Complete. City Hall was completely reconstructed.
Relocate critical facilities	Ida Grove	2020: Lift station needs raising -- Hillcrest (Off 5th St); <i>City Water & Public Works Depts</i> (City funds, IDNR, PDM) HIGH PRIORITY
Relocate critical facilities	Ida Grove	Update. Lift replacement still needed at Hillcrest Lift Station. Carry over project to 2026 HMP.
Bridges & Roads	Ida Grove	2020: Potential paving project on 6th St to improve drainage; <i>City Streets Dept</i> (City funds, Transportation funds, PDM) LOW PRIORITY
Bridges & Roads	Ida Grove	Update. Project still needed and includes drainage along with noted street repair needs
flow control		
Drainage projects	Ida Grove, OABCIG	2020: Drainage improvements are needed between the high school and Badger Creek; <i>City Administrator, School Board or Plant Engineering, IDNR</i> (Local funds, School District funds, IDNR program funds) HIGH PRIORITY

Drainage projects	Ida Grove	2020: There is interest in improving drainage at Cobb Park - raise elevation, pump to drain; <i>City Administrator, IDNR</i> (Local funds, IDNR program funds, PDM) LOW PRIORITY
Drainage projects	Ida Grove	Complete. Addressing some of the needs expressed in the 2 projects indicated above, the City has implemented a \$200,000 drainage project, installing a 36" tube along 7 th Street.
refuge		
Shelter	Ida Grove	2020: Issue formal recommendation for owners to add cement refuge shelter to trailer park to accommodate its four (4) residents; <i>City Administrator, Property Owner(s), Residents</i> (Local funds, private funds, Response support funds, PDM pending classification of facility) MEDIUM PRIORITY
Shelter	Ida Grove	Update - Resolved. The City has opted to designate the Rec Center as refuge/shelter location in the event of disasters. As such, a new project is added under "Generators" to substantiate use during extreme events that may include power outages.
technology		
natural barriers/supports		
Stabilization	Ida Grove	2020: Rip rap needed @ Moorhead Ave Bridge; <i>City administration & Streets Dept, County Engineer</i> (Local funds, if scheduled accordingly State/Federal Transpo funds PDM) HIGH PRIORITY
Stabilization	Ida Grove	Update. Bridges are inspected every 2 years. 6 bridges are receiving ongoing erosion control (rip rap). Two bridges are scheduled for major repairs within the next 5 years as noted under New Projects: Bridges & Roads.
Stabilization	Ida Grove	Complete. Moorhead Ave reconstruction completed in 2022 with nearly \$2.24M invested. Funding sources include \$1M in SWAP funding was designated for this project.

Several other projects are in the works for the Ida Grove community, including but not limited to the following.

- Completed Water Systems Improvement Project. Started in 2021, 3 phases as follows:
 1. Meter replacement (whole town) and AMI reader on the water tower
 2. Water tower sandblast and paint – interior and exterior; Added mixer
 3. Drilled a new well (#9), added generator at well site north of town, updated chlorination system.

Project total about \$2.4 million (SRF loan)

- Sewer Improvement Project. Final plans approved by council but bids far exceeded estimated costs. Need is urgent. However, local funds cannot cover balance of project.

USDA forgivable loan availability has been capped at \$1M. Project was bid at \$20M, with expectation that other loans and residents would cover expense. Currently not feasible. City will continue seeking viable options to improve plant. Replacement would still assume use of existing facility/building.

- Currently an RBC plant and going to aero mod plant
- Currently haul sludge, will be going to a press dry system (cakes)
- Current layout will all be moved/repurposed, updated lighting, electrical, enclosure

Ida Grove woman hit by train

Published by admin on Mon, 10/03/2022 - 10:50pm



A frightening accident occurred in Ida Grove last Monday evening when a train collided with a pedestrian at the railway crossing of Washington Street.

A railway worker reported that a woman was walking across the tracks while the train was coming. The conductor pulled the emergency brake, but the train was going too fast to stop in time.

The woman was hit and dragged several feet. The railway worker relayed that while she was injured, the woman was still conscious after the crash. Emergency crews transported her to the hospital.

<https://www.idacountycourier.com/content/ida-grove-woman-hit-train> *Ida Grove woman hit by train.*

Published by admin on Mon, 10/03/2022 - 10:50pm (June 10, 2025)

- of portion of building, etc.
- Estimated cost is about \$11 million (USDA loan)
 - Iowa/Washington Street: I attached some documentation of that. Stormwater runoff issue for years. Floods basement of a couple homeowners. (LOST funding)

d. Risk Assessment

Contributing Factors

Among its efforts to reduce risk and effects of natural disasters and other hazards, Ida Grove is taking steps to address abandoned and dilapidated buildings. The city also worked with Iowa DNR to complete a tree assessment.

Survey respondents indicate mixed messages on mitigation efforts and impacts of hazardous weather and other events. Several comments relate to drainage issues/concerns which reflect a noted priority for Flash Flooding. Several responses indicate an understanding of the high expense of infrastructure maintenance while still noting insufficient functionality of same. Ability to operate small business during extreme incidents and assuring access to medical services are clear priorities. There is an assumption that certain areas are better maintained than others. For this reason, a transparent schedule of maintenance is recommended within city planning efforts.

Storm events as recorded through the NOAA database include 17 measured incidents specific to Ida Grove and the Ida Grove Airport. Those occurrences are in addition to the 85 recorded events for the Ida “Zone” impacting the county as a whole.

<i>Location</i>	<i>Date</i>	<i>Time</i>	<i>Type</i>	<i>Mag</i>	<i>Dth</i>	<i>Inj</i>	<i>PrD</i>	<i>CrD</i>
IDA GROVE	6/5/2020	0:53	Hail	1.00 in.	0	0	0.00K	0.00K
IDA GROVE	6/5/2020	0:57	Hail	1.75 in.	0	0	0.00K	0.00K
IDA GROVE	6/5/2020	0:59	Hail	2.50 in.	0	0	0.00K	0.00K
IDA GROVE	6/5/2020	0:59	Hail	1.50 in.	0	0	0.00K	0.00K
IDA GROVE	6/5/2020	1:06	Hail	1.00 in.	0	0	0.00K	0.00K
IDA GROVE	8/10/2020	8:20	Thunderstorm Wind	61 kts. EG	0	0	1.00K	0.00K
IDA GROVE	6/16/2021	20:34	Thunderstorm Wind	52 kts. EG	0	0	0.00K	0.00K
IDA GROVE	6/16/2021	20:52	Hail	0.75 in.	0	0	0.00K	233.00K
IDA GROVE	6/16/2021	21:00	Hail	1.25 in.	0	0	0.00K	0.00K
IDA GROVE	6/16/2021	21:02	Hail	1.00 in.	0	0	0.00K	0.00K
IDA GROVE MUNI ARPT	8/30/2021	20:54	Hail	0.75 in.	0	0	0.00K	0.00K
IDA GROVE	4/12/2022	16:57	Hail	1.00 in.	0	0	0.00K	0.00K

IDA GROVE	4/12/2022	16:57	Hail	1.00 in.	0	0	0.00K	0.00K
IDA GROVE MUNI ARPT	4/12/2022	19:02	Thunderstorm Wind	52 kts. EG	0	0	0.00K	0.00K
IDA GROVE MUNI ARPT	5/19/2022	22:49	Hail	1.00 in.	0	0	0.00K	0.00K
IDA GROVE	5/30/2022	5:33	Thunderstorm Wind	65 kts. EG	0	0	0.00K	0.00K

Priority Hazards

Maintained from the 2020 HMP, the city finds the following to be priority hazards.

- Tornado/Windstorm
- Severe Winter Storm
- Thunderstorm w/Hail & Lightning

Survey respondents noted “very concerned” at the highest rate consistent with the city’s identified priority hazards. In the section requiring selection of top three concerns, Flash Flooding exceeded Thunderstorms w/ Hail & Lightning. Of the 19 categorized natural disasters and other hazards, 10 or more resident respondents indicated at least some level of concern for all but six, with the highest frequency noted for Infrastructure Failure (14 of 15). Top three as determined by survey respondents is consistent in Ida Grove and the county overall showing #1 – Tornado/Windstorm, #2 – Severe Winter Weather, and #3 – Flash Flooding.

e. Mitigation Needs, Actions, & Strategies

Projects developed or needed to address Ida Grove’s mitigation needs are provided in the following table.

communication/education		
Promo/Info	Ida Grove	New. City promotes county-based alerts including advisory notifications from weather to other issues such as boil advisories and additional urgent notifications requiring immediate action. City plans to increase community awareness of alert system as well as other disaster mitigation education. <i>City Clerk, Public Works, County EMA, other Department heads as applicable.</i> (Local general budget funds, safety grants, weather preparedness program funds if available) HIGH PRIORITY.
Warning Sirens	Ida Grove	New. The city is planning to replace or upgrade the sirens located at 4 th & Moorhead Streets, 7 th & Rowher Streets, and on the 600 block of N Main and N 2 nd Streets. <i>City Maintenance Crew, County EMA.</i> (Local – community benefits

		grants as may be available, PDM, Emergency Response/Public Safety program funds as may be available) HIGH PRIORITY
Warning Sirens	Ida Grove	New. City is in urgent need of adding a 4th warning siren to serve the south side of town. Local fund availability is extremely limited. <i>City Maintenance Crew, County EMA.</i> (Local – community benefits grants as may be available, PDM, Emergency Response/Public Safety program funds as may be available) HIGH PRIORITY
Assessment/Study	Ida Grove	New: Interested in pursuing a study re: long term street repairs. Issues include drainage and flow control in addition to surface maintenance. Project in review stage and cost not readily determined. City Clerk, Streets Superintendent, Public Works, contracted engineering firm, regulatory bodies as may be applicable – County Roads, IA DOT. (Local funds, STBG/Road use funds as may be approved, local foundation grants). MEDIUM PRIORITY
tools/equipment		
Generator & Related Projects	Ida Grove	Carry over. Dedicated generators needed at Water Treatment facility , City Hall and Moorhead Avenue. An additional portable generator is needed to serve all lift stations with that one generator dedicated to moving between stations as appropriate. <i>City Crew, County EMA</i> (Local general budget funds, County supports, State/Federal response funds, PDM, Community Benefits funds) HIGH PRIORITY
Generator & Related Projects	Ida Grove	New. Generator needed at Rec Center to facilitate function as refuge/shelter designation during disasters and other extreme hazard events. <i>City Council, Public Works, County EMA</i> (Local general budget funds, County supports, State/Federal response funds, PDM, Community Benefits funds) HIGH PRIORITY
Generator & Related Projects	Ida Grove	New. Generator needed (urgent) at Maintenance Shop to ensure access to, and function of critical equipment during disasters and other extreme hazard events. Current estimated cost is quoted at \$16,500 (not including gas piping). <i>City Council, Public Works, County EMA</i> (Local contribution reliant on general fund and grant opportunities, County supports, State/Federal response funds, PDM, Community Benefits funds) HIGH PRIORITY
Equipment	Ida Grove	Carry over. City in need of small tractor with can and blower on front to facilitate and improve snow removal. <i>City Streets Department</i> (City general funds) LOW PRIORITY
Equipment	Ida Grove	Carry over. large pump our 4” gas powered pump needs replaced. <i>Wastewater dept.</i> (Local general fund) HIGH PRIORITY.
development		
Improve existing facilities & infrastructure	Ida Grove	Carry over. Casements along 7th St (Badger Creek); <i>City Roads Dept, collaborate with County Engineer</i> (City general budget funds, IDOT Program funds, PDM) HIGH PRIORITY
Improve existing facilities & infrastructure	Ida Grove	New. Water/Sewer Treatment Facility upgrades are in progress. System is undergoing modification from mechanical treatment to an anaerobic process. Early estimate is \$11M; set for bid early 2-25. <i>City utilities. Public Works.</i> (Local general budget, Water utility fees, USDA/IDNR as may be applicable) HIGH PRIORITY
Improve existing facilities & infrastructure	Ida Grove	New. Hydrant replacements are planned citywide addressing approximately 25% of the city’s hydrants, primarily located on the central and north sides of town. Priority reflects limited viability for funds for full implementation as urgently as needed. <i>City Maintenance, Fire Department.</i> (Grant options needed, Department allocations as match; Public Safety funds as may be applicable, PDM) MEDIUM PRIORITY

Improve existing facilities & infrastructure	Ida Grove	Carry Over. Lift replacement still needed at Hillcrest Lift Station. Cost estimate not immediately available. <i>Public Works.</i> (Local general budget , Water utility fees, USDA/IDNR as may be applicable) HIGH PRIORITY
Bridges & Roads	Ida Grove	Carry over. Paving project on 6th St to improve drainage; Project still needed. Cost estimated at \$1.4M includes drainage along with noted street repair needs. <i>City Streets Dept</i> (City general budget funds, Transportation funds, FMA/Disaster mitigation Disaster response funding as available) LOW PRIORITY
Bridges & Roads	Ida Grove	New: Funding has been awarded to fix Main Street bridge at \$1.5M, including major repairs. <i>Streets Dept.</i> (City budget, Transportation funds) HIGH PRIORITY
Bridges & Roads	Ida Grove	New: Funding for Washington Street bridge is pending and anticipated within the next few years. <i>Streets Department, IA DOT</i> (City budget, Transportation funds, IA DOT) HIGH PRIORITY
Bridges & Roads	Ida Grove	New. City has 6 bridges requiring significant maintenance ² are shown as New Projects in the 2026 HMP. Four bridges remain as needed projects, with lower priority due to lack of known funding opportunities. <i>City Streets Dept.</i> (City general budget funds, Transportation funds, Disaster Response/Disaster Mitigation funds as available) LOW PRIORITY
Bridges & Roads	Ida Grove	New. Resurfacing needed on 2 nd St & 6 th St. Estimated cost based on recently completed similar project is \$300K each. <i>City Streets Dept.</i> (Local road use funds, local general budget funds) HIGH PRIORITY
Bridges & Roads	Ida Grove	New. Many road repair projects throughout town are needed due to deterioration/crumbling. Damage is significant, however lack of funding may delay implementation. <i>City Streets Dept.</i> (Local general budget funds, Disaster mitigation as may be applicable, others TBD) MEDIUM PRIORITY
Bridges & Roads	Ida Grove	New. E. 2 nd St resurfacing (including drainage improvements). Approximately ¼ of project has been completed with an estimated cost of \$1M to fully implement. Project is significant in maintaining access during evacuation events, for routine transportation pathways, and for emergency services. <i>Streets/Roads Department.</i> (Local operations fund, Road use funds, additional to be determined. \$300K investment. <i>City Streets Dept.</i> (Local funds).
flow control		
Flood protection	Ida Grove	New & In Progress. The Army Corps of Engineers is completing a Slip Lining Levee project in Ida Grove on the Moorhead Park side of the levee. Implementation date, cost, and funding sources not provided. <i>US ACE</i> (ARPA) HIGH PRIORITY
Drainage projects	Ida Grove	New. Storm sewers and culverts citywide need of dredging with Moorhead Ave and US 175 being highest priority. Cost estimate not immediately available. <i>City Streets Dept</i> (Local general budget funds, disaster mitigation funds as available, other funds TBD) HIGH PRIORITY
refuge		
technology		
natural barriers/supports		
Stabilization	Ida Grove	New. Stabilization as a project carries over to the 2026 Plan. Particular needs at Railroad St at Badger Creek. Significant erosion. Steep pitch of bank complicates stabilization. <i>City administration & Streets Dept, County Engineer</i> (Local general budget funds, if scheduled accordingly State/Federal Transpo funds PDM) HIGH PRIORITY