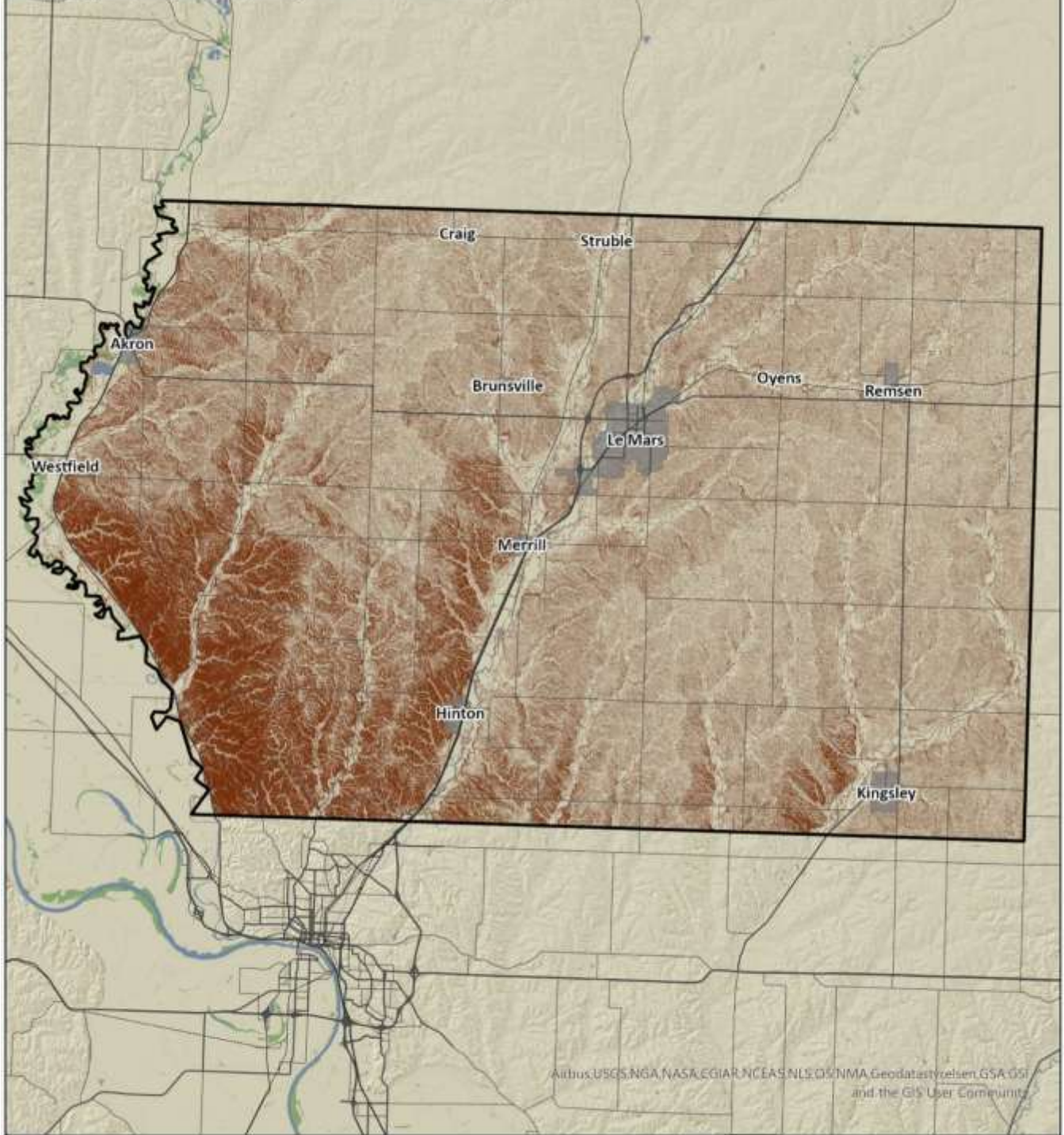


Table of Contents

D. Plymouth County	4.4-2
Profile – Unincorporated Area & County	4.4-2
Participation	4.4-10
Capabilities	4.4-11
Risk Assessment	4.4-14
Mitigation Actions, Strategies, & Projects	4.4-24
Jurisdictions	4.4-25
1. Akron	4.4-25
2. Brunsville.....	4.4-34
3. Craig	4.4-39
4. Hinton.....	4.4-43
5. Kingsley	4.4-51
6. Le Mars.....	4.4-58
7. Merrill.....	70
8. Oyens	4.4-77
9. Remsen.....	4.4-82
10. Struble.....	4.4-89
11. Westfield	4.4-95

Topography Map, Plymouth County



Airbus, USGS, NGA, NASA, EGIAR, NCEAS, NLS, OS, NMA, Geodatastyrelsen, GSA, OSI and the GIS User Community

Marsh, Swamp, Bog, Prairie
 River

Lake, Reservoir
 Incorporated Areas
 County Boundary

Contours
 Railroad

0 3 6 Miles



The map does not represent a survey, no liability is assumed for the accuracy of the data delineated herein, either expressed or implied by SIMPCO.

© 2025 Stoufford Interstate Metropolitan Planning Council. Please call 712-279-6286 to obtain permission for use.

D. Plymouth County

PROFILE – UNINCORPORATED AREA & COUNTY

Plymouth County is located along the western edge of northwest Iowa. The County is bordered by Sioux County to the north, Cherokee County to the east, Woodbury County to the south, and the state of South Dakota to the west. Plymouth County is approximately 864 square miles.

Incorporated cities within Plymouth County include Akron, Brunsville, Craig, Hinton, Kingsley, Le Mars, Merrill, Oyens, Remsen, Struble, and Westfield.

Rivers & Watersheds

The western border of Plymouth County follows the Big Sioux River. Other significant rivers in the County include the Broken Kettle Creek, Floyd River, Perry Creek, and the West Fork of the Little Sioux River.

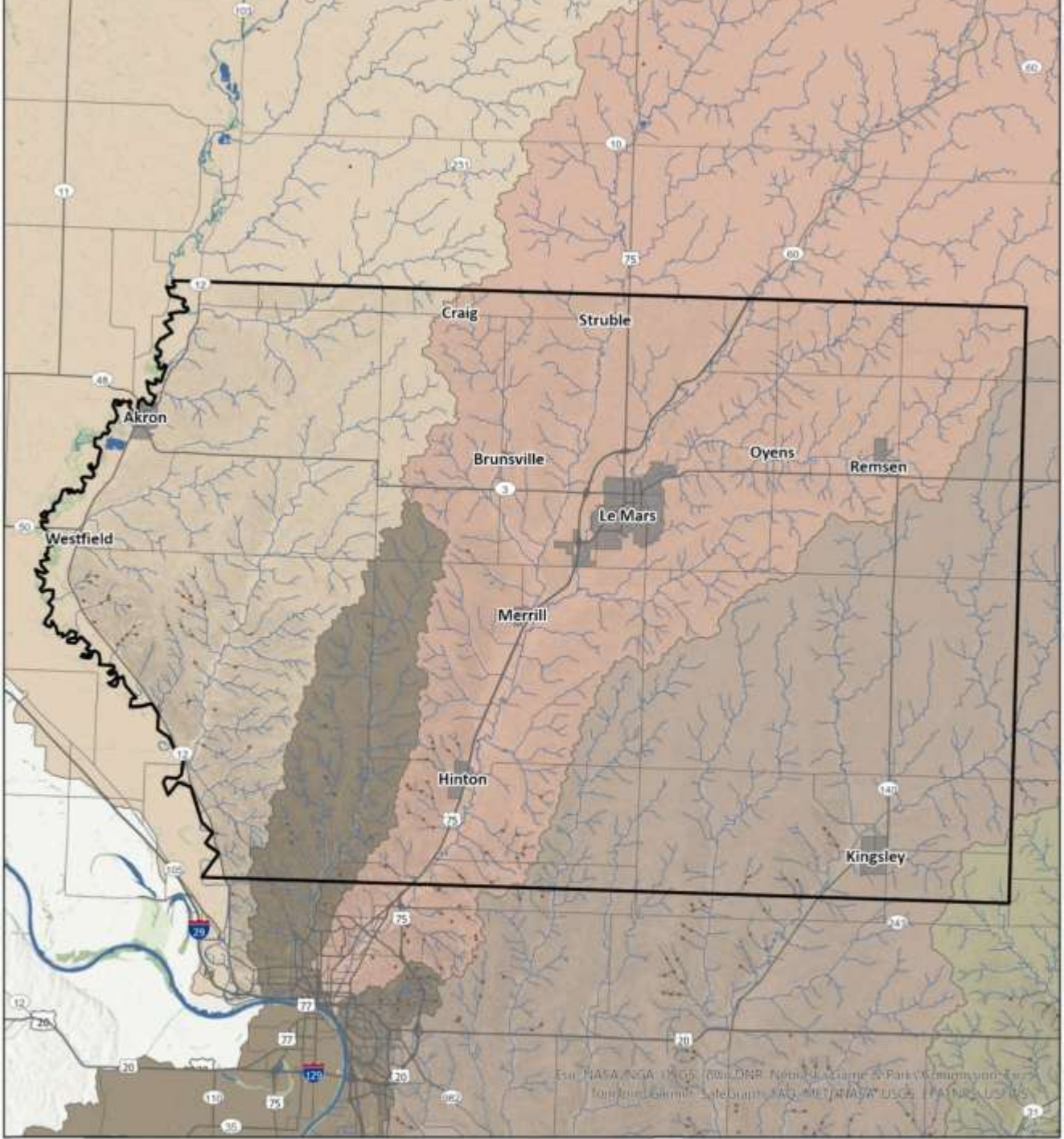
There are five (5) watersheds within the County that drain storm water and snow melt into streams and lakes, wetland areas, or into groundwater reserves. These watersheds are Blackbird-Soldier Watershed, Floyd Watershed, Little Sioux Watershed, Monona-Harrison Ditch Watershed, and Lower Big Sioux Watershed. Regional breakdown for watersheds is provided in *Planning Area* information. The following map depicts the sub-watersheds within those as listed above. Sub-watersheds are determined based on hydrologic unit code (HUC) level 12, which includes more detail including tributary data.

Landform Regions & Geology

Plymouth County is composed of three (3) distinct landform regions¹, which include Northwest Iowa Plains, Southern Iowa Drift Plains, and Loess Hills are said to have been formed by ancient glaciers. The Northwest Iowa Plains and Southern Iowa Drift Plains are marked by rolling hills that are the result of the manipulation of glacial sediment deposits by glacial melt and streams.

¹ Source: <https://iowageologicalsurvey.uiowa.edu/iowa-geology/landforms-iowa>

Watershed and Water Resources, Plymouth County



• Dams	Incorporated Areas	Floyd	Monona-Harrison Ditch
Marsh	County Boundary	Little Sioux	
River	Watersheds	Lower Big Sioux	
Lake, Reservoir	Blackbird-Soldier	Maple	
River/Stream	Boyer		

0 3 6 Miles

The map does not represent a survey, no liability is assumed for the accuracy of the data delineated herein, either expressed or implied by SIMPCD.
© 2025 Siouxland Interstate Metropolitan Planning Council. Please call 712-279-6286 to obtain permission for use.

The Loess Hills are unique to the region, and begin in Plymouth County. This landform was created from the accumulation of wind-blown silt. Today these steep hills rise from the surrounding landscape.

Transportation Network

U.S. Highway 75 and State Highway 3 intersect near the center of Plymouth County. The transportation network also includes State Highways 3, 12, and 140.

The County's secondary road system is composed of 1,423.27 miles. Within this category, Farm-to-Market roads make up 364.06 miles, while Area Service roads account for 1,059.21 miles. Gravel or earth surface types account for 1,056.23 miles of the secondary road system. The remaining 370.76 miles are composed of bituminous, asphalt, or PCC surface types.

County Governance & Supports

The county seat is in Le Mars, just north of the center of the County. Its jurisdiction covers all unincorporated portions within county boundaries. Plymouth County is governed by a five (5)-person Board of Supervisors. The Board is the legislative body of the county. Additional Offices include the following departments. Some departments have shared staff.

- Assessor
- Attorney
- Auditor
- Clerk of Courts
- County Conservation
- E-911
- Economic Development
- Emergency Management
- Engineer / Secondary Roads
- Information Technology
- Juvenile Court Services
- Planning & Zoning / Sanitarian
- Recorder
- Sheriff
- Treasurer
- Veteran Affairs

The Plymouth County Emergency Management Director serves as a key leader in planning, coordinator of operations, and chief of staff to the jurisdiction's executives during emergency response, community liaison to build the emergency program, and lead agency in coordination

of regional mitigation planning. The Plymouth County Sheriff's Office provides law enforcement services to the rural portions of the County and supports community departments. Mental Health services as administered in Plymouth County are relegated to state districting protocol.

County Facilities

County Courthouse	215 4 th St, Le Mars
Law Enforcement Center	451 14 th Ave NE, Le Mars
Engineer's Office	32802 170 th St, Le Mars
Roads Department - Equipment/Supply Storage	Several locations throughout County
Historical Museum	335 1 st Ave SW, Le Mars
County Fairgrounds	500 4 th Ave NE, Le Mars
County Veterans Memorial	1000 3 rd Ave SE, Le Mars
Hillview Recreation Area	25601 C60, Hinton
Five Ridge Prairie	15561 260 th St, (rural)Westfield
Big Sioux Park	14241 Hwy 12, Akron
Birkley's Bend	26779 Hwy 12, Westfield
Boyd's Bend	13469 Hwy 12, Akron
Doorenbos-Ford Wetland	120 th St & Hwy 12, Akron
E.C. Lippke Wetland	11132 240 th St, Westfield
Highway 75 Wetland	NE of Merrill, east side Hwy 75
Kohler Memorial Grassland	150 th St and Quest Ave, Remsen
Meadow Wildlife Area	45597 140 th St, Remsen
Millsite River Access	10001 Hwy 3, Westfield
O'Brien Prairie	26211 Noble Ave, Le Mars
River's Bend Wildlife Area	11826 180 th St, Akron
Ron Wilmot River Access	180 th St & Hwy 12, Akron
Rufus B. Hatch Memorial Grassland	L22 & 140 th St, Remsen
Southeast Wildwood	41564 310 th St, Kingsley

Education

Plymouth County is home to 18 public schools. Two of these schools are part of the grade-sharing agreement between the Marcus Meriden Cleghorn (MMC) and Remsen Union (RU)

Community School Districts, with portions located in Cherokee County. Additionally, there are four private schools within the county. The remaining 16 public schools are divided among four school districts, which include the following:

- Le Mars Community School District
- Hinton Community School District
- Akron-Westfield Community School District
- Kingsley-Pierson Community School District

Statistics show educational attainment in Plymouth County² reflects a relatively strong foundation in basic and postsecondary education. A higher percentage of residents have completed high school or some college compared to the state average. The county also has a notable portion of residents with associate's degrees, while fewer individuals hold bachelor's or graduate degrees compared to the state. The percentage of people without a high school diploma is slightly lower than the state average, indicating comparable access to early education. Overall, Plymouth County shows solid rates of high school and some college education but lags behind the state in advanced degree completion.

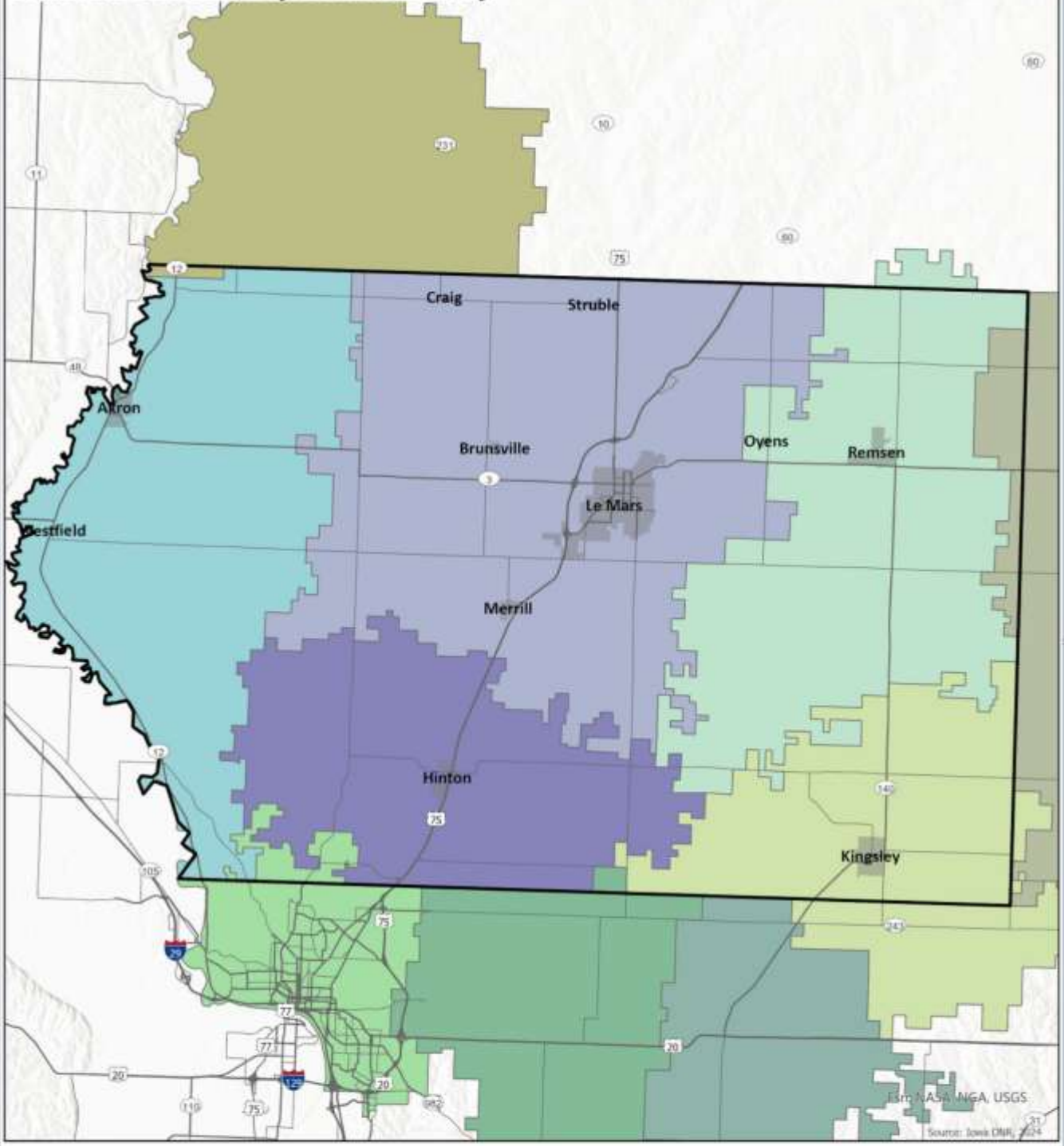
It is important to note that many residents as may be employed by one of the major manufacturing/production businesses in the county have attained certifications for machinery operation and maintenance as a credential for positions held. These certifications, while not included in education stats, can be applied to other employment opportunities and merit due consideration in employability and career advancement.

CensusReporter.gov estimates, the median household income is \$81,600 with about 6.8% of its population living below the poverty level.

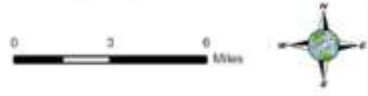
Generally, the categories that FEMA identifies as vulnerable populations are present in the County at similar rates compared to the State.

² Source: <https://censusreporter.org/profiles/05000US19149-plymouth-county-ia/>

School Districts, Plymouth County



- | | | |
|---|--|---|
| AKRON WESTFIELD | LE MARS | WEST SIOUX |
| HINTON | MARCUS-MERIDEN-CLEGHORN | WOODBURY CENTRAL |
| KINGSLEY-PIERSON | REMSEN-UNION | |
| LAWTON-BRONSON | SIOUX CITY | |



The map does not represent a survey, no liability is assumed for the accuracy of the data delineated herein, other expressed or implied by SIMPCO.

© 2020 Siouxland Interstate Metropolitan Planning Council. Please call 712-279-6206 to obtain permission for use.

Population

<i>Community Characteristics</i>	
Population (2023)	25,699
Population (2020)	25,141
Total Households	10,297
Median Household Income	\$81,600
Median Household Income – Iowa	\$73,147

<i>Vulnerable Populations</i>	<i>Count</i>	<i>Percent</i>
5 years and younger	1,453	5.7%
65 years and older	4,956	19.3%
Below the poverty level	1,799	6.8%
Living with a disability	2,992	11.8%

Healthcare Facilities

Plymouth County houses Floyd Valley Healthcare in Le Mars. The facility has experienced significant expansion in recent years. Services include Emergency Services, Urgent Care, Specialists, Primary Care, Assisted Living Facility, and Education and Wellness programming. There are several assisted living, nursing homes, and rehabilitation centers throughout the county, as well as local dental and vision care providers.

Housing

Plymouth County has a relatively high median home value compared to the state of Iowa, although its median rent is slightly lower. The county contains a total of 10,863 housing units, with the majority being occupied. Of the occupied units, a significant portion are owner-occupied, while a smaller proportion are renter-occupied. The county has a low vacancy rate, suggesting a stable housing market. These figures highlight a community with a strong emphasis on homeownership, while rental options are also well-represented.

<i>Housing Characteristics</i>	<i>Plymouth</i>	<i>Iowa</i>
Median Home Value	\$218,600	\$195,900

Median Rent	\$865	\$891
	<i>Count</i>	<i>Percent</i>
Total Housing Units	10,863	-
Occupied	10,319	95%
Owner-occupied	8,038	74%
Renter-occupied	2,824	26%
Vacant	543	5%

Income & Economics

In Plymouth County, the civilian employed population aged 16 and older totals 20,115 individuals. The largest employment sector is education, health care, and social assistance, which employs over one-fifth of the workforce. Manufacturing and retail trade are also major contributors, with a significant portion of the population working in these industries. Agriculture, including forestry, fishing, and hunting, remains an important sector, alongside transportation, warehousing, and utilities. Other notable sectors include finance, professional services, and public administration. While smaller portions of the workforce are employed in arts, entertainment, and other services, the data reflects a diverse economy with strong representation in both traditional industries and service-oriented sectors.

Much of Plymouth County’s economic development and large scale employment is hosted in Le Mars, its county seat. In addition to county employees and City of Le Mars staff and administration, the following are recognized as leading employers as follows.

- Bekins, Inc.
- BoDeans Baking Company
- Dairy Farmers of America/Kemps Dairy
- Fareway
- Floyd Valley Healthcare
- Gehlen Catholic School
- Gus Pech Manufacturing Co.
- Hy-Vee
- Le Mars Community School District
- IML Containers of Iowa
- NorAm Cold Storage and Distribution
- SmithCo Side-Dump
- Walmart
- Wells Enterprises

Industry for the Civilian Employed Population 16 and over

Civilian employed population (16 and older)	20,115	-
Agriculture, forestry, fishing and hunting, and mining	937	6.9%
Construction	758	5.0%
Manufacturing	2,788	20.6%
Wholesale trade	90	2.1%
Retail trade	1,227	9.1%
Transportation and warehousing, and utilities	1,146	8.5%
Information	214	1.6%
Finance and insurance, and real estate and rental and leasing	657	4.9%
Professional, scientific, and management, and administrative and waste management services	612	4.5%
Education services and health care and social assistance	3,019	22.3%
Arts, entertainment, & recreation, and Accommodation & food services	625	4.6%
Other services except public administration	806	6%
Public administration	441	3.3%

Valuation of County Assets

Total Blanket TIV	\$	48,630,267
Building	\$	46,416,552
Personal Property	\$	2,213,715
Misc Property Sched	\$	8,040,445
Misc Property Unsched	\$	<u>809,345</u>
Total TIV	\$	57,480,057
APD TIV	\$	5,265,534
Grand Total TIV	\$	<u>62,745,591</u>
Covered Vehicles	\$	5,313,511

PARTICIPATION

A Mitigation Planning meeting was held December 4, 2025 at the County Annex. Facilitated by SIMPCO, the following were in attendance.

- Rebecca Socknat, EMA

- Stacey Feldman, Auditor
- Nick Beeck, Conservation
- Shawn Olson, Director of IT
- Steven Chapman, Zoning Administrator

Additional participation was collected by way of surveys. Completed online or on paper, there is record of 248 primary survey respondents. Of those, 65 indicated residence in Plymouth County. A secondary survey was made available to participating school districts for distribution to junior and senior students. Of the 65 student surveys collected, 54 students noted residence in Plymouth County. Some insight from the perspective of area youth is discussed in the Risk Assessment portion of this profile.

CAPABILITIES

Plymouth County participates in the NFIP program, CID #190899A. The County Zoning Administrator serves as Floodplain Administrator. As a county, its unincorporated areas have zero RL/SRL properties.

<i>Plans/Guidance Docs</i>	
<ul style="list-style-type: none"> • Builder’s Plan • Comprehensive Plan • County Recovery Plan 	<ul style="list-style-type: none"> • Land Use Plan • Local/County Emergency Plan
<i>Policies/Ordinances</i>	
<ul style="list-style-type: none"> • Building Code • Drainage Ordinance • Floodplain Ordinance • Historic Preservation Ordinance • Landscape Ordinance 	<ul style="list-style-type: none"> • Nuisance Ordinance • Storm Water Ordinance • Subdivision Ordinance • Zoning Ordinance
Iowa Wetlands and Riparian Areas Conservation Plan	Plymouth County Conservation
<i>Programs</i>	
Zoning/Land Use Restrictions	
Codes Building Site/Design	
National Flood Insurance Program (NFIP) Participant	CID #190899A
Property Acquisition	

Planning/Zoning Boards	
Mutual Aid Agreements	IMAC & EMAC
<i>Staff/Department</i>	
Zoning Official / Sanitarian	Planning and Zoning, and Environmental Health
Mapping Specialist (GIS)	
Engineer	
Development Planning (role assumed by Board of Supervisors)	
Emergency Management Coordinator	
NFIP Floodplain Administrator	
Emergency Response Team	Special Response Team
Historic Preservation	
<i>Non-Governmental Organizations</i>	<i>Comments</i>
Veterans Groups	County Veterans Affairs Commission
Environmental Groups	<ul style="list-style-type: none"> • County Environmental Health Department. • Conservation Foundation Board • Land Acquisition Conservation
<i>Local Funding Availabilities & Authorities</i>	
Apply for Community Development Block Grants	
Fund projects through Capital Improvements funding	
Authority to levy taxes for a specific purpose	
Assess impact fees for new development	
Ability to incur debt through	<ul style="list-style-type: none"> • general obligation bonds • special tax bonds • private activities
Ability to withhold spending in hazard prone areas	
State / Federal grants by department	
Plymouth County Betterment Fund	
TIF program	Wind Turbine
	Ethanol Urban Renewal

While the county profiles are intended to cover unincorporated areas within defined border, it is impossible to completely separate county operations and services from cooperative planning strategies – especially in mitigation and response planning. One such collaboration is availability of the County Courthouse, located in Le Mars, to serve as gathering place in the

event of an evacuation of Franklin Elementary School. Proximity, access, and ready-to-activate security features figure in such designations.

The primary goal of the county in the event of any emergency is the continuity of operations. Ongoing monitoring of protocol, policies, and procedure enable timely adjustments and improvements as may be dictated in real time.

Review of Actions Taken

communication/education		
Promo/Info	Plymouth Co	2020: Signage needed to better define restricted areas; <i>County Engineer, Sanitarian</i> (County funds) HIGH PRIORITY
Promo/Info	Plymouth County	Implemented: Plymouth County continues to administer general alerts. Assessing feasibility of adding employees to enable uniform communications and enabling external use specific to departments. System is used by Communications Center, CERT Team including Floyd Valley Hospital.
tools/equipment		
Generator & Related Projects	All Counties	2020: Assess availability of generators for all critical facilities, portable or permanent. Prep all critical facilities for connection to generators as applicable; <i>County EMA</i> (Varying levels of funds needed. Support may come through County, State, and Federal grant and loan programs) HIGH PRIORITY
Generator & Related Projects	Plymouth County	Implemented. County Courthouse, Courthouse Annex, and Law Enforcement office have added a generator with a \$300,000 investment. Portable generators are available for communities; no additional need for transfer switches.
Equipment	Plymouth County	Implemented. Plymouth County Law Enforcement added equipment to increase efficiency of services, especially in emergency situations. Additions include Bearcat, Incident Command Trailer, and multi-use (80-person capacity) Shelter trailer. <i>County law Enforcement.</i> (ARPA funds).
development		
Bridges & Roads	Plymouth County	2020: Roadway access/elevation projects identified @ Floyd River Basin and Deep Creek Basin areas. While floodmap revisions continue, the County does not anticipate significant changes in unincorporated areas. <i>IDNR, County Conservation, County Engineer</i> (Clean Water Conservation program funds, County funds, IDNR funds, Transportation funds) LOW PRIORITY
Bridges & Roads	Plymouth County	Update was not provided. Project removed from Priority List.

flow control

refuge

technology

natural barriers/supports

Some projects in place throughout the county include tree removal within drainage districts, tree planting projects to re-establish an appropriate tree canopy, and protections of the loess hills.

Plymouth County completed a shelter at the Fairgrounds in 2015 and invested \$3500 in refuge resource kits during the planning period since 2020. Some additional refuge/shelter-related projects are needed including notification systems improvements.

Following major flooding over the weekend in Iowa, President Joe Biden declared a major disaster in the state Monday night and approved federal aid to help recovery efforts.

"The President's action makes Federal funding available to affected individuals in the counties of Clay, Emmet, Lyon, Plymouth, and Sioux," a White House press release said.

"Assistance can include grants for temporary housing and home repairs, low-cost loans to cover uninsured property losses, and other programs to help individuals and business owners recover from the effects of the disaster."

Flooding in northwest Iowa, caused by [heavy rainfall](#), had impacted at least 1,900 properties, leaving hundreds destroyed, Iowa Gov. [Kim Reynolds](#) told reporters Sunday.

<https://abcnews.go.com/US/flooding-northwest-iowa-leads-250-water-rescues-hundreds/story?id=111355969> (by Mariama Jalloh, June 24, 2024, 11:10 PM) June 10, 2025

RISK ASSESSMENT

Local accounting of weather-related disasters and other hazards are detailed within jurisdiction profiles reflecting reported events in the NOAA Storm Event database and local

accounts. Overall, Plymouth County's reports³ from 11/01/2019 through 12/31/2024 included 183 storm events in 17 categories.

<i>Event Summary for Plymouth County, Iowa</i>	
Number of County/Zone areas affected:	2
Number of Days with Event:	27
Number of Days with Event and Death:	0
Number of Days with Event and Death or Injury:	0
Number of Days with Event and Property Damage:	1
Number of Days with Event and Crop Damage:	0
Number of Event Types reported:	13

<i>Location</i>	<i>Date</i>	<i>Time</i>	<i>Type</i>	<i>Mag</i>	<i>Dth</i>	<i>Inj</i>	<i>PrD</i>	<i>CrD</i>
PLYMOUTH (ZONE)	12/28/2019	3:00	Winter Weather		0	0	0.00K	0.00K
PLYMOUTH (ZONE)	1/12/2020	14:00	Winter Weather		0	0	0.00K	0.00K
PLYMOUTH (ZONE)	1/17/2020	6:00	Blizzard		0	0	0.00K	0.00K
PLYMOUTH (ZONE)	1/18/2020	11:00	Cold/wind Chill		0	0	0.00K	0.00K
PLYMOUTH (ZONE)	2/12/2020	15:00	Winter Weather		0	0	0.00K	0.00K
PLYMOUTH (ZONE)	2/12/2020	23:00	Cold/wind Chill		0	0	0.00K	0.00K
PLYMOUTH (ZONE)	2/19/2020	1:00	Winter Weather		0	0	0.00K	0.00K
AKRON	3/10/2020	7:00	Flood		0	0	0.00K	0.00K
PLYMOUTH (ZONE)	3/19/2020	17:00	Winter Weather		0	0	0.00K	0.00K
AKRON	3/29/2020	11:00	Flood		0	0	0.00K	0.00K
WESTFIELD	3/30/2020	7:00	Flood		0	0	0.00K	3.00K
AKRON	4/1/2020	0:00	Flood		0	0	0.00K	0.00K
WESTFIELD	4/1/2020	0:00	Flood		0	0	0.00K	0.00K
PLYMOUTH (ZONE)	4/12/2020	6:00	Winter Storm		0	0	0.00K	0.00K
WESTFIELD	6/21/2020	5:34	Thunderstorm Wind	56 kts. EG	0	0	1.00K	0.00K
PLYMOUTH (ZONE)	7/28/2020	0:00	Drought		0	0	0.00K	865.00K
PLYMOUTH (ZONE)	8/1/2020	0:00	Drought		0	0	0.00K	668.00K

³ <https://www.ncdc.noaa.gov/stormevents/>

HINTON	8/14/2020	14:25	Hail	1.75 in.	0	0	0.00K	0.00K
HINTON	8/14/2020	14:59	Hail	0.75 in.	0	0	0.00K	0.00K
MILLNERVILLE	8/14/2020	14:05	Hail	1.00 in.	0	0	0.00K	0.00K
WESTFIELD	8/14/2020	13:54	Hail	1.00 in.	0	0	0.00K	0.00K
MERRILL	8/31/2020	3:37	Hail	1.00 in.	0	0	0.00K	0.00K
PLYMOUTH (ZONE)	9/1/2020	0:00	Drought		0	0	0.00K	60.00K
PLYMOUTH (ZONE)	10/1/2020	0:00	Drought		0	0	0.00K	77.00K
PLYMOUTH (ZONE)	10/25/2020	3:00	Winter Weather		0	0	0.00K	0.00K
PLYMOUTH (ZONE)	11/1/2020	0:00	Drought		0	0	0.00K	10.00K
PLYMOUTH (ZONE)	11/9/2020	22:00	Winter Weather		0	0	10.00K	0.00K
PLYMOUTH (ZONE)	12/1/2020	0:00	Drought		0	0	0.00K	0.00K
PLYMOUTH (ZONE)	12/23/2020	10:00	Blizzard		0	0	0.00K	0.00K
PLYMOUTH (ZONE)	12/29/2020	8:00	Winter Weather		0	0	0.00K	0.00K
PLYMOUTH (ZONE)	1/1/2021	0:00	Drought		0	0	0.00K	0.00K
PLYMOUTH (ZONE)	1/14/2021	22:00	Blizzard		0	0	0.00K	0.00K
PLYMOUTH (ZONE)	1/23/2021	17:00	Winter Weather		0	0	0.00K	0.00K
PLYMOUTH (ZONE)	1/25/2021	18:00	Winter Weather		0	0	0.00K	0.00K
PLYMOUTH (ZONE)	2/1/2021	0:00	Drought		0	0	0.00K	0.00K
PLYMOUTH (ZONE)	2/4/2021	3:00	Winter Weather		0	0	0.00K	0.00K
PLYMOUTH (ZONE)	2/14/2021	6:00	Extreme Cold/wind Chill		0	0	0.00K	0.00K
PLYMOUTH (ZONE)	2/21/2021	6:00	Winter Storm		0	0	0.00K	0.00K
PLYMOUTH (ZONE)	3/1/2021	0:00	Drought		0	0	0.00K	0.00K
PLYMOUTH (ZONE)	4/1/2021	0:00	Drought		0	0	0.00K	0.00K
PLYMOUTH (ZONE)	5/1/2021	0:00	Drought		0	0	0.00K	73.00K
PLYMOUTH (ZONE)	6/1/2021	0:00	Drought		0	0	0.00K	2.350M
AKRON	6/11/2021	5:38	Thunderstorm Wind	61 kts. EG	0	0	35.00K	0.00K
O LEARY	6/22/2021	17:10	Hail	1.00 in.	0	0	6.00K	5.220M
O LEARY	6/22/2021	17:20	Thunderstorm Wind	52 kts. EG	0	0	2.00K	0.00K
O LEARY	6/22/2021	17:23	Thunderstorm Wind	56 kts. EG	0	0	2.00K	0.00K
O LEARY	6/22/2021	17:34	Funnel Cloud		0	0	0.00K	0.00K
PLYMOUTH (ZONE)	7/1/2021	0:00	Drought		0	0	0.00K	1.300M
NEPTUNE	7/8/2021	23:29	Hail	1.00 in.	0	0	0.00K	0.00K
NEPTUNE	7/8/2021	23:31	Hail	1.00 in.	0	0	0.00K	0.00K
PLYMOUTH (ZONE)	8/1/2021	0:00	Drought		0	0	0.00K	866.00K

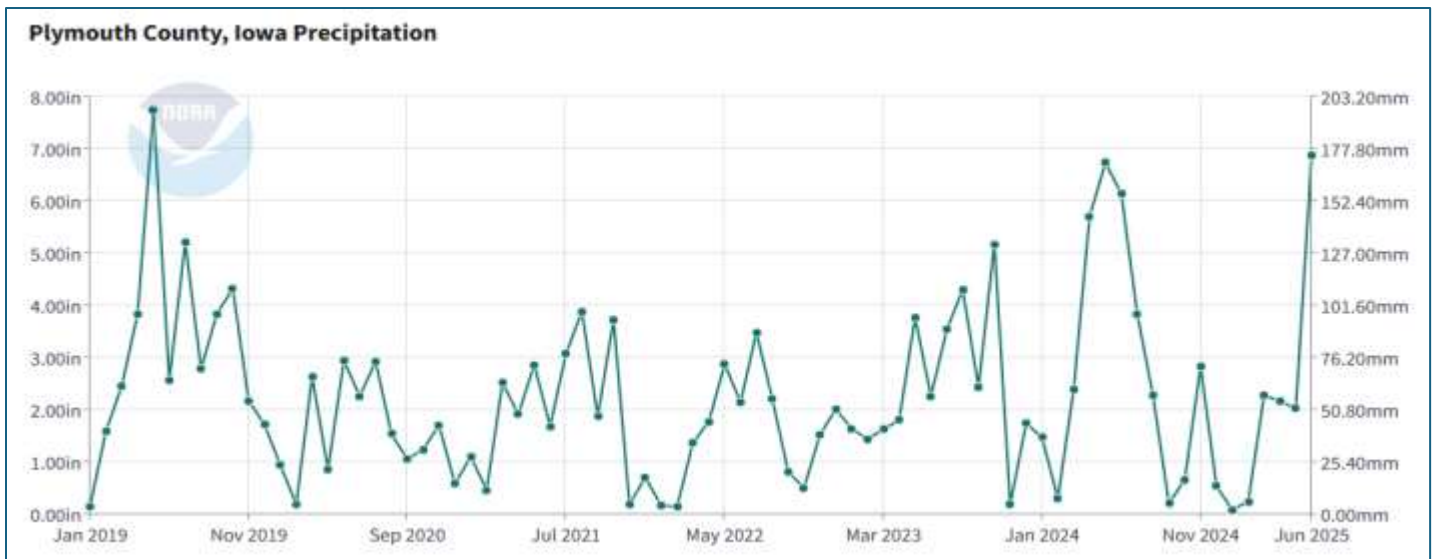
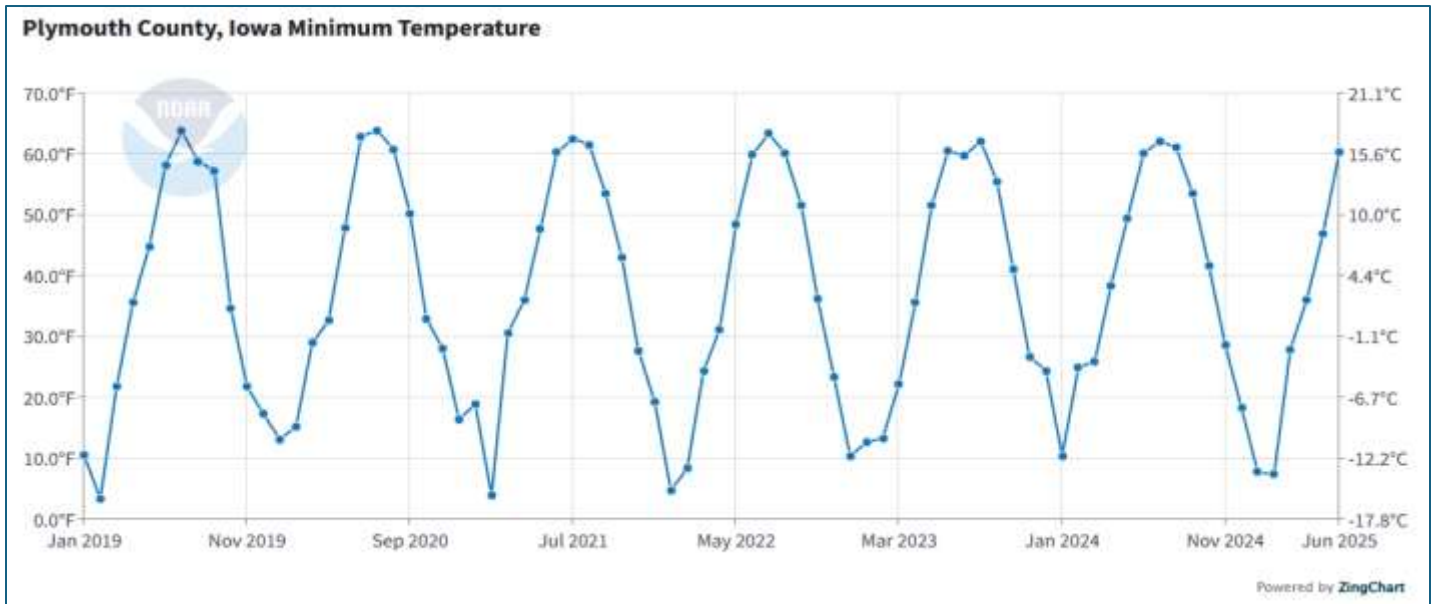
LE MARS	8/27/2021	0:16	Thunderstorm Wind	51 kts. MG	0	0	0.00K	30.00K
PLYMOUTH (ZONE)	9/1/2021	0:00	Drought		0	0	0.00K	282.00K
LE MARS	10/20/2021	8:17	Hail	0.88 in.	0	0	0.00K	0.00K
PLYMOUTH (ZONE)	12/10/2021	13:00	Winter Weather		0	0	0.00K	0.00K
KINGSLEY	12/15/2021	16:38	Thunderstorm Wind	72 kts. EG	0	0	0.00K	0.00K
KINGSLEY	12/15/2021	16:39	Thunderstorm Wind	72 kts. EG	0	0	25.00K	0.00K
KINGSLEY	12/15/2021	16:39	Thunderstorm Wind	78 kts. EG	0	0	20.00K	0.00K
KINGSLEY	12/15/2021	16:39	Tornado	EF1	0	0	50.00K	0.00K
KINGSLEY	12/15/2021	16:40	Thunderstorm Wind	82 kts. EG	0	0	30.00K	0.00K
KINGSLEY	12/15/2021	16:40	Thunderstorm Wind	83 kts. EG	0	0	35.00K	0.00K
KINGSLEY	12/15/2021	16:41	Thunderstorm Wind	74 kts. EG	0	0	25.00K	0.00K
KINGSLEY	12/15/2021	16:41	Thunderstorm Wind	72 kts. EG	0	0	30.00K	0.00K
KINGSLEY	12/15/2021	16:44	Thunderstorm Wind	69 kts. EG	0	0	20.00K	0.00K
KINGSLEY	12/15/2021	16:44	Thunderstorm Wind	65 kts. EG	0	0	25.00K	0.00K
KINGSLEY	12/15/2021	16:47	Thunderstorm Wind	64 kts. EG	0	0	5.00K	0.00K
PLYMOUTH (ZONE)	12/15/2021	20:35	High Wind	55 kts. MG	0	0	0.00K	0.00K
PLYMOUTH (ZONE)	1/1/2022	6:00	Cold/wind Chill		0	0	0.00K	0.00K
PLYMOUTH (ZONE)	1/5/2022	7:00	Cold/wind Chill		0	0	0.00K	0.00K
PLYMOUTH (ZONE)	2/21/2022	16:00	Winter Weather		0	0	0.00K	0.00K
PLYMOUTH (ZONE)	2/23/2022	4:00	Cold/wind Chill		0	0	0.00K	0.00K
PLYMOUTH (ZONE)	3/5/2022	13:30	Winter Weather		0	0	0.00K	0.00K
PLYMOUTH (ZONE)	3/15/2022	0:00	Drought		0	0	0.00K	0.00K
PLYMOUTH (ZONE)	3/25/2022	10:00	Strong Wind	27 kts. MS	0	0	0.00K	0.00K
PLYMOUTH (ZONE)	4/1/2022	0:00	Drought		0	0	0.00K	0.00K
PLYMOUTH (ZONE)	4/23/2022	10:00	High Wind	52 kts. MG	0	0	0.00K	0.00K
PLYMOUTH (ZONE)	4/23/2022	13:00	Wildfire		0	0	0.00K	0.00K
PLYMOUTH (ZONE)	5/1/2022	0:00	Drought		0	0	0.00K	500.00K
KINGSLEY	5/12/2022	18:30	Thunderstorm Wind	70 kts. EG	0	0	0.00K	16.00K
PLYMOUTH (ZONE)	6/1/2022	0:00	Drought		0	0	0.00K	7.140M
PLYMOUTH (ZONE)	7/1/2022	0:00	Drought		0	0	0.00K	10.210M
PLYMOUTH (ZONE)	8/1/2022	0:00	Drought		0	0	0.00K	12.370M
BRUNSVILLE	8/18/2022	16:44	Hail	0.88 in.	0	0	0.00K	0.00K
BRUNSVILLE	8/18/2022	16:56	Hail	1.00 in.	0	0	0.00K	0.00K

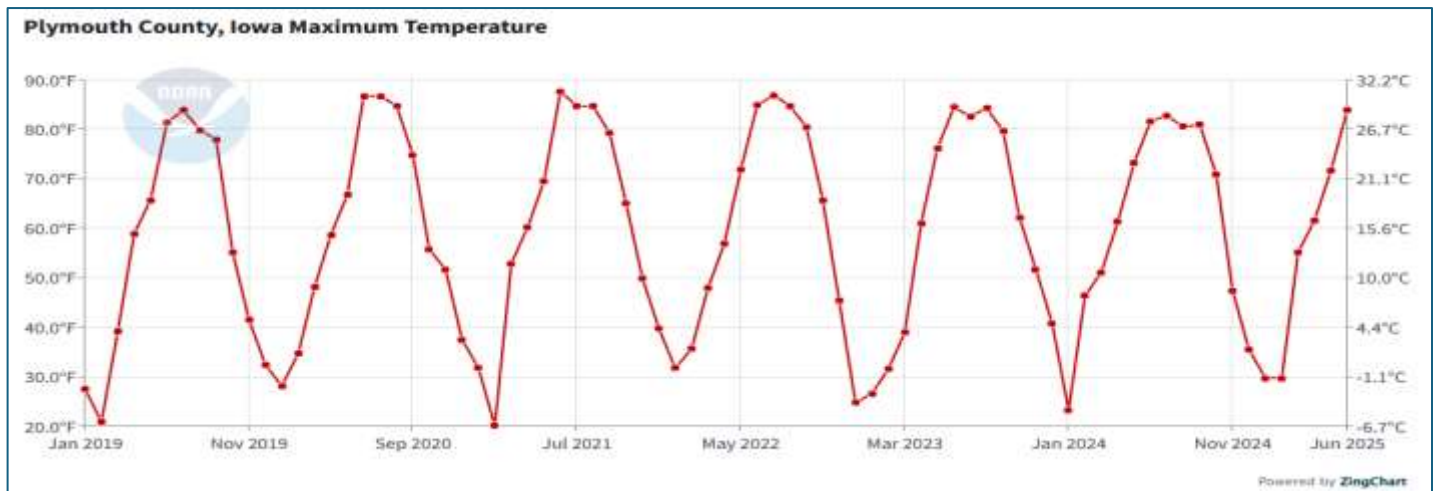
BRUNSVILLE	8/18/2022	16:58	Hail	1.25 in.	0	0	0.00K	11.00K
KINGSLEY	8/18/2022	18:22	Hail	1.50 in.	0	0	0.00K	0.00K
REMSEN	8/18/2022	18:00	Hail	1.00 in.	0	0	0.00K	0.00K
PLYMOUTH (ZONE)	9/1/2022	0:00	Drought		0	0	0.00K	2.870M
PLYMOUTH (ZONE)	10/1/2022	0:00	Drought		0	0	0.00K	0.00K
PLYMOUTH (ZONE)	11/1/2022	0:00	Drought		0	0	0.00K	0.00K
PLYMOUTH (ZONE)	11/29/2022	5:00	Winter Weather		0	0	0.00K	0.00K
PLYMOUTH (ZONE)	12/1/2022	0:00	Drought		0	0	0.00K	0.00K
PLYMOUTH (ZONE)	12/8/2022	16:00	Winter Weather		0	0	0.00K	0.00K
PLYMOUTH (ZONE)	12/22/2022	0:00	Extreme Cold/wind Chill		0	0	0.00K	0.00K
PLYMOUTH (ZONE)	1/1/2023	0:00	Drought		0	0	0.00K	0.00K
PLYMOUTH (ZONE)	1/3/2023	3:00	Winter Weather		0	0	0.00K	0.00K
PLYMOUTH (ZONE)	1/18/2023	18:00	Winter Storm		0	0	0.00K	0.00K
PLYMOUTH (ZONE)	1/28/2023	0:00	Winter Storm		0	0	0.00K	0.00K
PLYMOUTH (ZONE)	2/1/2023	0:00	Drought		0	0	0.00K	0.00K
PLYMOUTH (ZONE)	2/22/2023	10:30	Winter Weather		0	0	0.00K	0.00K
PLYMOUTH (ZONE)	3/1/2023	0:00	Drought		0	0	0.00K	0.00K
PLYMOUTH (ZONE)	3/8/2023	17:30	Winter Weather		0	0	0.00K	0.00K
PLYMOUTH (ZONE)	3/22/2023	22:00	Winter Weather		0	0	0.00K	0.00K
PLYMOUTH (ZONE)	4/1/2023	0:00	Drought		0	0	0.00K	0.00K
AKRON	4/10/2023	23:00	Flood		0	0	0.00K	0.00K
WESTFIELD	4/12/2023	0:00	Flood		0	0	0.00K	0.00K
MERRILL	4/19/2023	19:39	Hail	1.00 in.	0	0	0.00K	0.00K
MILLNERVILLE	4/19/2023	19:03	Hail	1.00 in.	0	0	0.00K	0.00K
MILLNERVILLE	4/19/2023	19:09	Hail	1.00 in.	0	0	0.00K	0.00K
REMSEN	4/19/2023	20:04	Hail	1.00 in.	0	0	0.00K	0.00K
PLYMOUTH (ZONE)	4/30/2023	9:00	Strong Wind	39 kts. MG	0	0	0.00K	0.00K
PLYMOUTH (ZONE)	5/1/2023	0:00	Drought		0	0	0.00K	0.00K
HINTON	5/10/2023	23:05	Hail	1.75 in.	0	0	0.00K	0.00K
OYENS	5/10/2023	23:40	Hail	1.75 in.	0	0	0.00K	0.00K
OYENS	5/10/2023	23:42	Hail	2.00 in.	0	0	0.00K	0.00K
PLYMOUTH (ZONE)	6/1/2023	0:00	Drought		0	0	0.00K	0.00K
PLYMOUTH (ZONE)	7/1/2023	0:00	Drought		0	0	0.00K	0.00K
HINTON	7/4/2023	13:50	Thunderstorm Wind	56 kts. EG	0	0	0.00K	0.00K

NEPTUNE	7/4/2023	14:02	Thunderstorm Wind	61 kts. EG	0	0	0.00K	6.00K
MILLNERVILLE	7/12/2023	3:55	Thunderstorm Wind	65 kts. EG	0	0	0.00K	0.00K
HINTON	7/21/2023	18:06	Thunderstorm Wind	56 kts. EG	0	0	0.00K	0.00K
PLYMOUTH (ZONE)	7/25/2023	10:00	Excessive Heat		0	0	0.00K	0.00K
PLYMOUTH (ZONE)	8/1/2023	0:00	Drought		0	0	0.00K	0.00K
LE MARS MUNI ARPT	8/5/2023	17:25	Thunderstorm Wind	62 kts. MG	0	0	5.00K	0.00K
PLYMOUTH (ZONE)	8/19/2023	13:30	Excessive Heat		0	0	0.00K	0.00K
PLYMOUTH (ZONE)	8/21/2023	11:00	Excessive Heat		0	0	0.00K	0.00K
PLYMOUTH (ZONE)	9/1/2023	0:00	Drought		0	0	0.00K	0.00K
PLYMOUTH (ZONE)	9/2/2023	12:00	Heat		0	0	0.00K	0.00K
PLYMOUTH (ZONE)	10/1/2023	0:00	Drought		0	0	0.00K	7.460M
PLYMOUTH (ZONE)	10/12/2023	15:00	Strong Wind	45 kts. MG	0	0	0.00K	0.00K
PLYMOUTH (ZONE)	10/28/2023	11:00	Winter Weather		0	0	0.00K	0.00K
PLYMOUTH (ZONE)	12/9/2023	9:00	Strong Wind	44 kts. MG	0	0	0.00K	0.00K
PLYMOUTH (ZONE)	12/25/2023	3:00	Ice Storm		0	0	0.00K	0.00K
PLYMOUTH (ZONE)	1/8/2024	4:00	Winter Storm		0	0	0.00K	0.00K
PLYMOUTH (ZONE)	1/10/2024	13:00	Winter Weather		0	0	0.00K	0.00K
PLYMOUTH (ZONE)	1/11/2024	14:00	Winter Storm		0	0	0.00K	0.00K
PLYMOUTH (ZONE)	1/12/2024	15:00	Blizzard		0	0	0.00K	0.00K
PLYMOUTH (ZONE)	1/12/2024	18:00	Extreme Cold/wind Chill		0	0	0.00K	0.00K
PLYMOUTH (ZONE)	1/18/2024	9:00	Winter Weather		0	0	0.00K	0.00K
PLYMOUTH (ZONE)	1/19/2024	22:00	Cold/wind Chill		0	0	0.00K	0.00K
PLYMOUTH (ZONE)	2/27/2024	15:00	Winter Weather		0	0	0.00K	0.00K
HINTON	4/16/2024	12:46	Tornado	EFU	0	0	0.00K	0.00K
JAMES	4/16/2024	12:49	Thunderstorm Wind	56 kts. EG	0	0	0.00K	0.00K
MERRILL	4/16/2024	13:10	Thunderstorm Wind	56 kts. EG	0	0	0.00K	0.00K
OYENS	4/16/2024	13:22	Thunderstorm Wind	61 kts. EG	0	0	0.00K	0.00K
REMSEN	4/16/2024	13:21	Thunderstorm Wind	61 kts. EG	0	0	0.00K	0.00K
STRUBLE	4/16/2024	13:00	Tornado	EF1	0	0	0.00K	0.00K
WEST LE MARS	4/16/2024	12:48	Tornado	EFU	0	0	0.00K	0.00K
REMSEN	4/30/2024	14:56	Hail	0.75 in.	0	0	0.00K	0.00K
REMSEN	4/30/2024	15:00	Hail	0.75 in.	0	0	0.00K	0.00K
REMSEN	4/30/2024	15:02	Hail	0.88 in.	0	0	0.00K	0.00K

REMSEN	4/30/2024	15:04	Hail	1.00 in.	0	0	0.00K	0.00K
MILLNERVILLE	5/20/2024	22:27	Hail	0.88 in.	0	0	0.00K	0.00K
REMSEN	5/20/2024	18:50	Hail	1.00 in.	0	0	0.00K	0.00K
O LEARY	5/21/2024	5:43	Thunderstorm Wind	56 kts. EG	0	0	0.00K	0.00K
AKRON	6/21/2024	9:00	Flood		0	0	0.00K	0.00K
JAMES	6/21/2024	1:30	Flood		0	0	1.580M	0.00K
WESTFIELD	6/21/2024	16:00	Flood		0	0	0.00K	0.00K
STRUBLE	6/22/2024	2:00	Flood		0	0	0.00K	0.00K
STRUBLE	6/22/2024	14:00	Flood		0	0	0.00K	0.00K
WEST LE MARS	6/22/2024	18:00	Flood		0	0	0.00K	0.00K
HINTON	6/23/2024	3:00	Flood		0	0	0.00K	0.00K
MILLNERVILLE	6/23/2024	3:00	Flood		0	0	0.00K	0.00K
AKRON	7/1/2024	0:00	Flood		0	0	0.00K	0.00K
WESTFIELD	7/1/2024	0:00	Flood		0	0	0.00K	0.00K
PLYMOUTH (ZONE)	7/13/2024	12:00	Excessive Heat		0	0	0.00K	0.00K
KINGSLEY	7/29/2024	23:00	Thunderstorm Wind	65 kts. EG	0	0	0.00K	0.00K
KINGSLEY	7/29/2024	23:08	Thunderstorm Wind	74 kts. EG	0	0	0.00K	0.00K
LE MARS	7/29/2024	22:55	Thunderstorm Wind	61 kts. EG	0	0	0.00K	0.00K
LE MARS MUNI ARPT	7/29/2024	22:52	Thunderstorm Wind	56 kts. EG	0	0	0.00K	0.00K
LE MARS MUNI ARPT	7/29/2024	22:52	Thunderstorm Wind	54 kts. MG	0	0	0.00K	0.00K
MERRILL	7/29/2024	22:46	Thunderstorm Wind	56 kts. EG	0	0	0.00K	0.00K
PLYMOUTH (ZONE)	7/31/2024	11:00	Excessive Heat		0	0	0.00K	0.00K
PLYMOUTH (ZONE)	8/2/2024	12:00	Heat		0	0	0.00K	0.00K
PLYMOUTH (ZONE)	8/5/2024	12:00	Excessive Heat		0	0	0.00K	0.00K
PLYMOUTH (ZONE)	8/25/2024	12:00	Excessive Heat		0	0	0.00K	0.00K
PLYMOUTH (ZONE)	10/22/2024	0:00	Drought		0	0	0.00K	0.00K
PLYMOUTH (ZONE)	11/1/2024	0:00	Drought		0	0	0.00K	0.00K
PLYMOUTH (ZONE)	12/1/2024	0:00	Drought		0	0	0.00K	0.00K
PLYMOUTH (ZONE)	12/4/2024	12:00	Strong Wind	43 kts. MG	0	0	0.00K	0.00K
PLYMOUTH (ZONE)	12/19/2024	11:00	Strong Wind	29 kts. MS	0	0	0.00K	0.00K
Totals:							1.906M	52.387M

The following charts provide a visual of Plymouth County’s record of maximum temperature, minimum temperature and precipitation by month from November 2019 through December 2024 (www.ncei.noaa.gov/access/monitoring/climate-at-a-glance/county/time-series/IA).





Priority Hazards

Survey responses specific to Plymouth County indicated and Tornado/Windstorm at the greatest frequency at least somewhat concerned. Flooding (both flash and riverine) and Thunderstorm, Hail & Lightning follow, with notable concern indicated for Severe Winter Storm, Drought, Infrastructure Failure, Extreme Heat, and Hazardous Materials incidents. Issues have varied by community. In addition to Tornado/Windstorm concerns, the county identified top hazards by frequency of related projects.

Most concerning hazards as indicated by county officials are as follows. Determination of level of concern is primarily cost of recovery with sue consideration of risk to residents.

- Flood – Flash and Riverine
- Thunderstorm w/Hail & Lightning
- Severe Winter Storm

The top three most concerning hazards as ranked by survey response are Tornado/Windstorm, Severe Winter Storm, and Flash Flooding.

STORM LAKE, Iowa (KTIV) - A disaster proclamation has been signed for the counties impacted by the recent severe storms that started on Thursday, April 17.

On Friday, April 18, Iowa Gov. Reynolds issued a disaster proclamation for two Siouxland counties: Buena Vista County and Plymouth County. Other counties included are Page County and Fremont County.

Thousands left without power, numerous buildings damaged after severe weather hits Storm Lake, IA

This proclamation allows for state resources to be used to respond and recover from the aftereffects of the severe weather, effective immediately, and expires on Sunday, May 18.

Source: <http://www.ktiv.com/2025/04/18/gov-reynolds-issues-disaster-proclamation> (By [Kathryn Vlaanderen](#) Published: Apr. 18, 2025 at 3:50 PM CDT) June 10, 2025.

Future Risk

According to FEMA’s National Risk Index⁴, Plymouth County has an overall “Very Low” risk level relative state and national comparisons and Very High Community Resilience rating. An assessment of Hazard Types, Expected Annual Loss. Social Vulnerability, Risk Valuation and Risk Score provide a composite breakdown of vulnerability.

Composite Expected Annual Loss:	<u>\$ 4,815,286.01</u>
Composite Expected Annual Loss Rate National Percentile:	<u>30%</u>

Building EAL	<u>\$ 2,682,874.42</u>
Building EAL Rate	<u>\$ 1.00</u> per <u>\$2.82K</u> of building value
Agriculture EAL	<u>\$ 276,698.01</u>
Agriculture EAL Rate	<u>\$ 1.00</u> per <u>\$3.06K</u> of agriculture value
Population EAL	<u>0.16</u> fatalities
Population EAL Rate	<u>1</u> per <u>160.57K</u> people
Population Equivalence EAL	<u>\$ 1,855,713.57</u>

Hazard Type Risk Ratings

Hazard Type	Expected Annual Loss		Risk Factor Breakdown	
	EAL Value	EAL Rating	Risk Value	Risk Index Score
Cold Wave	\$ 136,389	Relatively Moderate	\$134,713	60.6

⁴ Source: <https://hazards.fema.gov/nri/map>

Drought*	\$ 239,042	Relatively Low	\$224,472	77
Earthquake	\$ 9,326	Very Low	\$9,623	16.3
Hail	\$ 101,390	Relatively Low	\$99,764	48.2
Heat Wave	\$ 60,596	Relatively Low	\$60,144	44.2
Ice Storm	\$ 37,814	Relatively Low	\$37,702	39.3
Landslide	\$ 21,900	Relatively Low	\$19,057	17.5
Lightning	\$ 30,060	Very Low	\$29,748	17
Riverine Flooding	\$ 21	Very Low	\$18	3.1
Strong Wind	\$ 479,908	Relatively Low	\$477,136	57.2
Tornado	\$ 3,415,905	Relatively Moderate	\$3,398,856	77.7
Wildfire	\$ 206,051	Relatively Low	\$180,774	69.6
Winter Weather	\$ 76,884	Relatively Low	\$76,006	56.3

*Note: Risk Index is based on Agricultural (crop only) impacts
<https://hazards.fema.gov/nri/report/viewer?dataLOD=Counties&dataIDs=C19149>

MITIGATION ACTIONS, STRATEGIES, & PROJECTS

Plymouth County identified several strategies and planned actions to address natural disasters and other hazards intended to reduce risk of property loss/damage and potential loss of life.

communication/education		
Promo/Info	Plymouth County	New. Plymouth County. Continuity of Operations plan development is in the works, assigning use of facilities when relocation is necessary. Plan includes consideration of displacement potential for all county services. Involved parties: <i>all department heads, Clerk of Court, State Officers, DOT, DNR, VA</i> (local staff paid time is anticipated as primary expense at this time) HIGH PRIORITY
Warning Sirens/Alerts	Plymouth Co	New. The county is interested in enhancing capacity for alerts at the fairgrounds. As large gatherings tend to slow cell networks, a booster is needed to ensure timely notifications, especially for larger scale outdoor events. <i>County EMA, Fair board</i> (Pre-disaster mitigation funds, Community Safety program funds, county funds, allocated fairground facility funds) HIGH PRIORITY
Warning Sirens/Alerts	Plymouth Co w/ City of Le Mars	New. Further consideration is needed for improved localized warnings in Le Mars, narrowing scope of generalized county-wide warnings for events that may have significant in-town effects. Such specification are expected to improve school district and shift adaptations for major employers as may be necessary. <i>County EMA, City of Le Mars, Emergency Response teams</i> (Pre-disaster mitigation funds, Community Safety program funds, county funds, allocated fairground facility funds) HIGH PRIORITY
tools/equipment		
Generator & Related Projects	Plymouth County	New. The County will continue to assess availability of generators for all critical facilities, portable or permanent. Prep all critical facilities for connection to

		generators as applicable, coordinating with communities to ensure their panels are prepped for connection. Cost will vary by facility. <i>County EMA, City public works departments.</i> (Emergency preparedness programs, BRIC, local funds, county funds) HIGH PRIORITY
development		
flow control		
Drainage Projects	Plymouth Co	New & Ongoing. Drainage ditch improvements are needed throughout the county. Maintenance is performed as needed with monitoring in effect for Akron, Westfield, and Hinton as areas frequently affected by flash flooding. Monitoring includes assessing opportunities for long term improvements that may supplement drainage ditch network. Secondary Roads (County budget, IDNR as may be applicable, Disaster response as may be needed) HIGH PRIORITY
refuge		
technology		
natural barriers/supports		
Stabilization	Plymouth County	New. Rip rap repair and assessment for permanent stabilization is in progress for a man-made berm surrounding a 20-acre lake south of Akron. Flooding in 2024 exceeding historic high flood marks by 5', resulting in significant deterioration of berm. County departments, IDNR as applicable (County budget item, disaster response funds as may be applicable, mitigation funds as may be available) HIGH PRIORITY

JURISDICTIONS

1. AKRON

a. Profile

The City of Akron lies on the western-most border of Plymouth County, on the Iowa/South Dakota border. Akron occupies about 1.23 square miles. Big Sioux River Road, IA-12, travels north/south on a slight diagonal through the central part of Akron with IA-3 branching east from 12 before following the city's southeast boundary and continuing east. Big Sioux River runs on the north part of Akron City's boundary, serving as the Iowa/South Dakota border. Union Pacific railroad line passes through Akron between IA-12 and the Big Sioux River.

City Governance & Community Supports

Akron is governed by a five-person elected Council and the Mayor. Offices in addition to Mayor and Council include:

- Akron Fire & Rescue
- City Administrator
- City Attorney
- City Clerk
- Deputy Clerk
- Library

- Parks & Recreation
- Police Department
- Zoning Board & Commission
- (Elected) Akron Care Center Board

The Akron Fire & Rescue is composed of about 45 volunteers that respond to calls for service utilizing 10 different apparatus and provide a wide variety of skills and special abilities). The city contracts with the County for Emergency Management. Akron is a member of the NFIP program, though residents are known to be inactive under flood insurance. A comprehensive plan was adopted October 2011. More information about the City of Akron can be found on their website at <https://akronia.org/>.

Demographics, Housing, & Economics

CensusReporter.gov estimates a slight increase in the population of Akron from 1,558 in 2020 to 1,660 in 2023⁵. The town is home to 748 households, with a median household income of \$59,706. Akron has a poverty rate of 9.2%, indicating that while the community is relatively prosperous, there are still some economic challenges faced by a portion of its residents.

Akron has a total of 802 housing units, with 746 currently occupied and 56 vacant, resulting in a strong occupancy rate. There are no mobile homes in the community. The majority of residents have moved into their homes since 2000, reflecting a trend toward newer housing. Smaller portions of the population settled into homes built in the 1990s or earlier, indicating a mix of both recent and long-established residences throughout the town.

Leading Employers

The following businesses, as well as those listed under Community Supports, operate and have established a necessary presence in Akron. Those as provided are leading employers in the city.

- Akron-Westfield Com School District
- Akron Care Center
- Heyl Truck Lines
- Mike's Inc.

⁵ Source: <https://censusreporter.org/profiles/16000US1900775-akron-ia/>

Critical Facilities

City Hall	220 Reed St
City Garage	202 Norka Dr
Library	350 Reed St
Senior Center	204 S 4 th St
Police Department	220 Reed Street
Fire Station	1000 Ridge Rd
Fire Siren	5 th St @ Dakota St
Huff Bldg	245 N 3 rd St
Pump House	260 N 3 rd St
Lefty Swift Ballfield & Park	601 Cheyenne Blvd
Main Lift Station	Reed St @ River Rd
Lift Station - Heyl	N Norka Dr
Lift Station – Waterbury (flood eliminated in 2024)	S River Rd
Substation	Hwy 12 @ Reed St
Water Tower & Equipment	S 9th St @ Main St
Well Bldg & Related	S end Akron Business Park
Children's Memorial Park	301 Iowa St
City Park, Sargent Field & related	
Bob Tucker Field	
Akron City Park	City Park Dr.
Akron Swimming Pool	340 North 5 th Street
Warning Siren	2 nd St @ Country Club Ln
Thrift Store	251 N 5 th St
Akron Golf Club	941 Country Club Dr

Community Supports, Vulnerable Populations, Gathering Locations, & Local Areas of Interest

Public and private gathering spaces and other community supports are integral to Akron's makeup. Following is a list of entities given due consideration in mitigation planning efforts. The list is not exhaustive but does highlight some of the community centers, gathering points, and supports known even to non-residents. These and other centers of activity and/or service will be itemized beneficiaries in project protection specifications as applicable.

<i>In Town</i>	
Akron-Westfield Senior High School	850 Kerr Dr
Akron-Westfield Middle School	
Akron-Westfield Elementary School	
Akron Care Center	991 Hwy 3
Akron Family Practice Clinic	321 Mill St
Akron Opera House	151 Reed Street
Akron Area Museum	S 6 th Street & Main St
Chub's Country Store	
CVA Grain Bin	
Casey's	
<i>Outside City Limits</i>	
Appley/Von Hagel Wetland	(South Dakota side of River)
Boyd's Bend	13469 Hwy 12
Big Sioux Park	14241 Hwy 12
Hole n' the Wall Lodge	14396 Diamond Ave
Doorenbos-Ford Wetland	near 120 th St & Hwy 12
Higman Wetland	(Iowa side of River)
Lazy H Campground	Little Pearl Lake
Rivers Bend	180th St & Hwy 12
Kellen Ponderosa	180th St & Hwy 12
Ron Wilmont River Access	180 th St & Hwy 12

Valuation of City Assets

Part of determining overall benefit of any project implementation, Akron periodically reviews its city-held properties in terms of how effective and efficient its functionality is within city operations. In recent years, the city sold two buildings and consolidated operations into a single facility. Protecting city investments is primary mitigation and other development planning. Valuation of assets is based on the community's current insurance policy. Values are provided as a foundation for cost-benefit analysis for projects expected to improve resiliency of the community overall. A more specific assessment of value will be determined by project

when included in an application for mitigation and pre-disaster programs. Numbers as provided are strictly for city-owned assets and do not include vehicles and equipment.

Total Building	\$	9,201,538
Total Personal Property	\$	1,004,917
Total Property in the Open	\$	<u>4,873,525</u>
Combined Total	\$	<u>15,079,980</u>

b. Participation

SIMPCO facilitated a virtual mitigation planning meeting via Teams, December 16, 2024 with Dan Rolfes, City Administrator and Becca Socknat, Plymouth Co EMA in attendance.

c. Community Capabilities

Capacity building is an ongoing process for the city. Informal designation of refuge locations has been made. Pending the emergency/incident, the Care Center and Fire Station will serve to shelter displaced or otherwise affected persons. Formalizing other actions is underway with updates to integrated community plans encompassing capital improvements, land use, and wellhead protect plans, including a master plan component.

The city participates in the NFIP program with the City Administrator serving as Floodplain Administrator. Akron has one RL/SRL property which is residential.

Community	Most Recent Date of Loss	# RL Properties	# of Losses	Net Building Payment	Net Contents Payment	Total Net Payment
AKRON	9/27/2010	1	2	\$ 24,054.89	\$ -	\$ 24,054.89

In addition to resources as available through State, Region, and County entities, the City has the following capabilities as locally derived and/or determined.

<i>Plans/Guidance Documents</i>
Comprehensive Plan
Capital Improvement Plan
Local/County Emergency Plan

Land Use Plan	
Wellhead protection plan	
Firewise or other fire mitigation plan	Fire Department incident command structure
Critical Facilities Plan (Mitigation/Response/Recovery)	within Emergency Ops Plan
<i>Policies/Ordinance</i>	
<ul style="list-style-type: none"> • Zoning Ordinance • Floodplain Ordinance • Subdivision Ordinance • Tree Trimming Ordinance 	<ul style="list-style-type: none"> • Nuisance Ordinance • Storm Water Ordinance • Drainage Ordinance • Historic Preservation Ordinance
Building Code	UBC & IBC 2018
Property Maintenance (by reference w/exceptions)	IPMC 2022
<i>Programs</i>	
Zoning/Land Use Restrictions	
Codes Building Site/Design	
National Flood Insurance Program (NFIP) Participant	CID #190223A
ISO Fire Rating	Akron class 4; Akron FD class 4/8B
Property Acquisition	
Planning/Zoning Boards	
Tree Trimming Program	
<i>Staff/Department</i>	
Zoning Administrator (volunteer position)	Building Code Official NFIP Floodplain Administrator
Public Works Official	role of Zoning Administrator
Emergency Response Team	Akron Fire & Rescue
Historic Preservation	
<i>Non-Governmental Organizations</i>	
Veterans Groups	Legion Post 186
Homeowner Associations	
Neighborhood Associations	Neighborhood Watch
Chamber of Commerce	
Community Organizations	<ul style="list-style-type: none"> • Lions • Friendship & Service Club • Knights of Columbus • Next Generation Club • PEO
<i>Local Funding Availability</i>	
Ability to apply for Community Development Block Grants	

Ability to fund projects through Capital Improvements funding	
Authority to levy taxes for a specific purpose	
Fees for water, sewer, or electric services	
Ability to incur debt through:	<ul style="list-style-type: none"> • general obligation bonds • special tax bonds • private activities

Review of Actions Taken (Since 2019)

Projects as implemented in the past five (5) years may have a considerable effect on the City’s ability to mitigate the effects of natural disasters when actions and strategies as proposed in the 2020 Plan were applied to those projects. Following is a status update.

communication/education		
Warning Sirens	Akron	2020: Assess need for additional warning siren near school; <i>School Board, City Council, County EMA</i> (Local funds, County supports, State/Federal response funds, PDM, Community Benefits funds) MEDIUM PRIORITY
		Resolved. City assessed function of existing equipment and determined additional siren is not necessary. School facilities are adequately served by existing warning siren.
tools/equipment		
Generator & Related Projects	Akron	2020: Transformer needed at wells to make ready for generator connections; <i>City Public Works & Waterworks Depts</i> (Local funds, Community benefit fund grants) HIGH PRIORITY
		Phase 1 Implemented. A generator is in place at the Fire Station and 2 generators are incorporated into the Water Treatment Plant U.V. project underway (03/2025).
development		
flow control		
refuge		
technology		
natural barriers/supports		

d. Risk Assessment






Contributing Factors

Smaller towns, Akron included, continue to struggle filling vacancies in volunteer and service positions alike. At the time of the mitigation planning meeting, the city was actively conducting

a search for a police officer to fill its second position. Volunteer participation in response departments has steadied somewhat, however there remains high turnover of new recruits brought in to fill in for retired persons. Adequate staffing directly impacts response capacity and Akron's efforts have resulted in a relatively strong volunteer base.

Akron is taking preventive action by strategically removing ash trees. A plan is in place to replace one tree for every two removed. Overall, 7-8 have been removed and 5 have been planted. Work continues as needed.

By [Dean Welte](#) and [Ervin Dohmen](#)
Published: Jun. 22, 2024 at 1:27 PM CDT

AKRON, Iowa (KTIV) - Plymouth County officials say the Floyd River at Le Mars and the Big Sioux River at Akron have crested. Water is expected to go down slowly from here on.

This news comes hours after Plymouth County Emergency Management told all Akron residents west of Highway 12 needed to evacuate immediately.

At about 3:30 p.m. Saturday water started coming up on Highway 12, with some residents reporting that the water was rising from the manholes on the street. Within two hours a large part of the area around Highway 12 was covered and Akron residents west of the highway were told to evacuate.

Before the evacuation was called, crews worked to place sandbags at places like Highway 12 and Reed Street but as the waters rose, they went further east into town to place bags closer to homes.

<https://www.ktiv.com/2024/06/22/officials-say-akron-ia-residents-low-lying-areas-should-be-prepared-evacuate/>
(By [Dean Welte](#) and [Ervin Dohmen](#) Published: Jun. 22, 2024 at 1:27 PM CDT) June 10, 2025

The flooding in 2019 overtook primary roadways multiple times resulting in long term closures along Highway 12 and River Rd. In addition to the damage caused to the roads, flooding took the Waterbury Lift Station permanently out of service. Berm, drainage, and other flood protection projects are hindered on the competitive application process for support funds. It is important to note that regardless of community size, infrastructure costs, such as that of a lift station or major road repairs, are the same as those of large urbanized areas. Therefore, the burden of cost weighs heavier on these small communities where the local tax base is already spread very thin.

In terms of natural disasters and other hazards, Akron shows 7 incidents reported in the NOAA Storm Event database from 11/01/2019 through 12/31/2024.

<i>Location</i>	<i>Date</i>	<i>Time</i>	<i>Type</i>	<i>Mag</i>	<i>Dth</i>	<i>Inj</i>	<i>PrD</i>	<i>CrD</i>
AKRON	3/10/2020	7:00	Flood		0	0	0.00K	0.00K
AKRON	3/29/2020	11:00	Flood		0	0	0.00K	0.00K
AKRON	4/1/2020	0:00	Flood		0	0	0.00K	0.00K
AKRON	4/10/2023	23:00	Flood		0	0	0.00K	0.00K
AKRON	6/21/2024	9:00	Flood		0	0	0.00K	0.00K
AKRON	7/1/2024	0:00	Flood		0	0	0.00K	0.00K
AKRON	6/11/2021	5:38	Thunderstorm Wind	61 kts. EG	0	0	35.00K	0.00K

The City of Akron does have repetitive loss properties recorded in the FEMA NFIP flood database.

County	Plymouth County
Community	Akron
Most Recent Date of Loss	9/27/2010
# of Repetitive Loss Properties	1
Number of Losses	2
Net Building Payment	\$24,054.89
Net Contents Payment	\$0.00
Total Net Payment	\$24,054.89

Priority Hazards

Among survey responses received from Plymouth County, none indicate Akron as jurisdiction of residence. From the perspective of the city, priority hazards are determined based on city expenses – one-time and ongoing, as accumulated due to natural disasters and other hazards. Due consideration is also given to residents. Flood mitigation remains an overwhelmingly high priority in project planning. As drought conditions persist, flood impacts are frustratingly more severe.

- Flood – both River and Flash
- Dam/Levee Failure
- Drought

e. Mitigation Needs, Actions, & Strategies

communication/education		
Promo/Info	Akron	New. PSAs - Improve communications of existing programs and systems as available including but not limited to Alert Iowa, Increasing water intake during extreme heat and/or extreme dry conditions; water conservation (drought considerations); Red Flag warning awareness; Lightning safety, Snowstorm/Heavy snow safety, Tornado safety. These activities are intended to reduce risk of life and loss/damage to property. <i>City Clerk, County EMA</i> (no funds needed) HIGH PRIORITY
tools/equipment		
Generator & Related Projects	Akron	Carry over. Transformer needed at wells to make ready for generator connections; <i>City Public Works & Waterworks Depts</i> (Local general budget funds, Community benefit fund grants) HIGH PRIORITY
Development		
flow control		
Drainage projects	Akron	New. City is assessing check valve on storm sewer pipe seeking a viable solution to reduce flooding incidents. Other considerations include diverting water and/or adding a pump station. Likely to include study and implementation. <i>Public Works, DNR, County Engineer, Contracted services.</i> (local general budget funds, disaster/flood mitigation program funds as may be available) HIGH PRIORITY
refuge		
Technology		
natural barriers/supports		
Levees/Berms	Akron	New. Berms/Levees to reduce flood risk; rip rap for bank stabilization. <i>City, FEMA coordination</i> (Local general budget funds, disaster/flood mitigation funds as may be available) HIGH PRIORITY

2. BRUNSVILLE

Note: The city participated in the development of the Regional Hazard Mitigation Plan, however, they have not included any specified mitigation actions, strategies, or projects. Therefore, the City of Brunsville, using stipulations defined by FEMA, is not recognized as an active “Participant” in the Plan.

To activate participant status, the city must process an amendment at the local level and file said amendment with Plymouth County and FEMA. Procedures to amend this plan are included in Title I.

Introduction, Section H. Amendments and Plan Maintenance.

a. Profile

The City of Brunsville is situated just north of center in Plymouth County, and occupies .24 square miles. The main road that connects the city to surrounding communities is Highway 3, running east-west about 1.2 miles south of Brunsville.

City Governance & Community Supports

Brunsville is governed by a five-person elected Council and the Mayor. Offices in addition to Mayor and Council include City Clerk and City Administrator. City staff has designated the Legion Hall as significant support entity to community well-being. The City contracts with the county for law enforcement and with the City of Le Mars's emergency response team. **City Council meets the second Monday of every month at 5:15 PM.**

The City of Brunsville is a member of the NFIP program, though the majority of residents are known to be inactive under flood insurance. The city is covered by the county's Local/County Emergency Plan and has a few plans adopted and are specified in the discussion of Community Capabilities.

Demographics, Housing, & Economics

A review of demographic data was completed using Census Reporter⁶. Brunsville's population rose to 180 from 129 between 2020 and 2023, reflecting notable growth in a short period. Using the 2020 Regional Hazard Mitigation Plan for reference, data from the 2010 decennial census estimated a population of 151.

The town includes 75 households, and the median household income stands at \$67,125. Despite a relatively solid income level, 21.6% of the population lives below the poverty line, indicating that a significant portion of residents may be facing economic hardship.

Brunsville has a total of 80 housing units, with 75 currently occupied and 5 vacant, indicating a high occupancy rate. There are no mobile homes in the community. Most residents have moved into their homes since 2000, while a smaller number settled in during the 1990s or earlier. This

⁶ Source: <https://censusreporter.org/profiles/16000US1908875-brunsville-ia/>

suggests a relatively modern housing stock with limited older residences, reflecting recent growth and development in the town.

Leading Employers

Drawn from records on file, Brunsville's leading employers are noted as follows.

- Corner Café
- Iowa State Bank

Critical Facilities, Community Supports, Vulnerable Populations, Gathering Locations, & Local Areas of Interest

Community facilities, both city-owned and independent as listed are determined from records on file.

- City Hall, 310 Oak St
- Brunsville Public Park, Oak St and Locust St
- ALCW (Lutheran Aid Society)
- American Legion Post 724 Heeren McHale Wilkens

Valuation of City Assets

A valuation of assets is not on file for Brunsville. For the purpose of cost-benefit considerations, a valuation of the City's assets may be compiled based on its insured properties, personal property, and facilities. Such calculations would be expected to accompany a mitigation project funding request.

b. Participation

Updates to the Brunsville profile were completed by SIMPCO using available online resources. Additional input was received from the County EMA regarding community capacity to withstand natural disasters and other hazards. One survey indicated Brunsville as jurisdiction of residence.

A final review of Brunsville’s profile was completed by Mayor Chad Cody and Nancy Harms, City Clerk on March 13, 2026. As a small community, local decisions and efforts for development are directly tied to area small businesses. Stakeholders represented through the review include the following businesses and entities.

- Corner Cafe
- Service 1st Insurance
- Porculture
- Scooters Natural Meats
- USPO
- Prairie Rose Golf Course IA State

The City of Brunsville, through review of the mitigation plan and provision of final comment has acknowledged plan content and agreed to adopt the plan upon FEMA approval.

c. Community Capabilities

Community capabilities as provided are as retained on file from previous projects and related meetings. The city participates in the NFIP program with the Mayor serving as Floodplain Administrator. Brunsville has zero RL/SRL properties.

<i>Policies/Ordinance</i>	
National Flood Insurance Program (NFIP) Participant	CID #190476A
Mutual Aid Agreements	Countywide & with SCFR for Haz Mat Response
<i>Non-Governmental Organizations</i>	
Veterans Groups	American Legion Post 724 Heeren McHale Wilkens
Community Organizations	ALCW (Lutheran Aid Society)
<i>Local Funding Availability</i>	
Ability to apply for Community Development Block Grants	
Ability to fund projects through Capital Improvements funding	
Authority to levy taxes for a specific purpose	
Fees for water, and sewer services	
Ability to incur debt through:	<ul style="list-style-type: none"> • general obligation bonds • special tax bonds • private activities

The city's floodplain ordinance was adopted 12/19/2004, Resolution 5-2004. Their building code was adopted 10/17/1990, recognizing state standards by reference.

Review of Actions Taken (Since 2019)

Brunsville did not include any scheduled projects in the 2020 HMP. A listing of other activities/projects has not been provided.

d. Risk Assessment

Contributing Factors

A compilation of storm events as recorded in the NOAA database show a single day of repeated reports of Hail. Brunsville likely experienced the effects of all events indicated for Plymouth "Zone" which include a wide range of event types (see Plymouth County profile for more information).

<i>Location</i>	<i>Date</i>	<i>Time</i>	<i>Type</i>	<i>Mag</i>	<i>Dth</i>	<i>Inj</i>	<i>PrD</i>	<i>CrD</i>
BRUNSVILLE	8/18/2022	16:44	Hail	0.88 in.	0	0	0.00K	0.00K
BRUNSVILLE	8/18/2022	16:56	Hail	1.00 in.	0	0	0.00K	0.00K
BRUNSVILLE	8/18/2022	16:58	Hail	1.25 in.	0	0	0.00K	11.00K

<https://www.ncdc.noaa.gov/stormevents/>

Priority Hazards

The city did not indicate priority hazards. One survey respondent indicated Brunsville as place of residence. While the respondent did not complete the ranking scale section of the survey, the following were all noted with "Very Concerned".

- Drought
- Flooding (both flash and riverine)
- Severe Winter Storm
- Thunderstorm w/Hail & Lightning,
- Tornado/Windstorm,
- Pandemic Human Disease

e. Mitigation Needs, Actions, & Strategies

The city has not identified a specific action, strategy, or project. Therefore, an amendment must be filed for FEMA and the Iowa Department of Homeland Security to formally recognize this jurisdiction as an eligible applicant for pre-disaster and/or mitigation funds as may be available.

3. CRAIG

Note: The city participated in the development of the Regional Hazard Mitigation Plan, however, they have not included any specified mitigation actions, strategies, or projects. Therefore, the City of Craig is not recognized as an active “Participant” in the Plan. To activate participant status, the city must process an amendment at the local level and file said amendment with Plymouth County and FEMA. Procedures to amend this plan are included in Title I. Introduction, section H. Amendments and Plan Maintenance.

a. Profile

The City of Craig is situated near the northern-most border of Plymouth County, and occupies 0.09 square miles. The city lies about eight miles north of Highway 3, which runs east and west.

City Governance & Community Supports

The City of Craig is governed by a five-person Council and the Mayor. In addition to Mayor and Council, Craig staffs a City Clerk. The City contracts with the county for law enforcement and Emergency Management. Craig also contracts with Ireton Fire and Rescue, which is located five miles north on CR-K30; Law is enforced by the Plymouth County Sheriff’s Office.

Demographics, Housing, & Economics

Current demographic information as presented is drawn from the Census Reporter⁷. For reference, the 2010 decennial census estimated Craig’s population at 89. In 2023, the population

⁷ Source: <https://censusreporter.org/profiles/16000US1916950-craig-ia/>

of Craig was 76, marking a slight decline from 79 residents in 2020. The town consists of 24 households, with a median household income of \$50,000. While the income level reflects a modest economic profile, about 13% of the population lives below the poverty line, indicating that a portion of residents may be experiencing financial difficulties.

Craig has a total of 24 housing units, all of which are currently occupied, leaving no vacant homes in the community. Two of the homes are mobile homes. The majority of residents have moved into their homes since 2000, while a smaller number have lived in their homes since the 1990s or earlier. This suggests a relatively modern and fully occupied housing stock, with limited older structures and no recent vacancies.

Leading Employers

While not hosting a large number of employees, Farmers' Cooperative has an established and necessary presence in Craig.

Critical Facilities, Community Supports, Vulnerable Populations, Gathering Locations, & Local Areas of Interest

- City Hall 725 Main St
- Poplar Park Main St and Pine St
- St John's Evangelical Lutheran Church 400 Linn St

Valuation of City Assets

A valuation of assets is not on file. For the purpose of cost-benefit considerations, a valuation of the city's assets may be compiled based on its insured properties, personal property, facilities, and other holdings. Such calculations would be expected to accompany a mitigation project funding request.

b. Participation

Updates to the Craig profile were completed by SIMPCO using available online resources. Additional input was received from the County EMA regarding community needs to withstand natural disasters and other hazards. None of the submitted surveys included notation of Craig as residence.

c. Community Capabilities

Available summary of Craig’s resources indicate a small population with a few localized resources. In addition to those as provided, Craig may benefit from county, region, and state resources as specified in respective sections of this plan.

Craig has a basic City code of Ordinances that is maintained with record of amendments, resolutions, and adoptions. Fire and Rescue services are provided through an agreement with the City of Ireton. Craig also has mutual aid agreements with all communities in Plymouth County and with SCFR (through Plymouth County) for hazardous materials response. Funding capabilities are as shown.

There is no floodplain designated within Craig city limits. Craig is not included on the NFIP database’s participant listing. **The city has zero RL/SRL properties.**

<i>Local Funding Availability</i>	
Ability to apply for Community Development Block Grants	
Ability to fund projects through Capital Improvements funding	
Authority to levy taxes for a specific purpose	
Fees for water and sewer services	
Ability to incur debt through:	<ul style="list-style-type: none">• general obligation bonds• special tax bonds• private activities

Review of Actions Taken (Since 2019)

The City of Craig did not include any scheduled projects in the 2020 HMP. A listing of other activities/projects has not been provided.

d. Risk Assessment

Contributing Factors

A review of available data in the NOAA Storm Event database revealed no recorded events centered in Craig between 11/01/2019 and 12/31/2024. However, Craig likely experienced the conditions as reported for 102 Plymouth “Zone” events including a broad range of weather events. More information about these events is catalogued in Plymouth County’s profile under Risk Assessment.

Priority Hazards

The city did not determine a prioritized list of hazard concerns. It can be expected that the natural disasters listed (as referenced in the 2020 HMP) remain significant concerns to the city.

- Tornado/Windstorm
- Sever Winter Storm
- Grass or Wildland Fire – Primarily due to lack of locally available resources to combat fire of any kind, this hazard may easily become widespread and travel to other communities.

e. Mitigation Needs, Actions, & Strategies

The city has not identified a specific action, strategy, or project. Therefore, an amendment must be filed for FEMA and the Iowa Department of Homeland Security to formally recognize this jurisdiction as an eligible applicant for pre-disaster and/or mitigation funds as may be available.

4. HINTON

a. Profile

Including some annexation activity in 2020 and property purchase in 2021, the City of Hinton covers about 0.9 square miles of land near Plymouth County's south border. US Highway 75, the main connector between Hinton and surrounding communities, runs north/south along much of the city's east border. The Floyd River runs about ¼ to ½ mile east of the highway, outside city limits. The Burlington Northern/Santa Fe, Illinois Central, and Union Pacific railroads lines run that same corridor.

City Governance & Community Supports

Hinton is governed by a **five**-person elected Council and the Mayor. Offices in addition to Mayor and Council include City Clerk, Municipal Utilities, Waterworks, Public Works, and Police Department. The Fire Department averages about 31 volunteer firefighters with, at last count, 11 emergency medical service certifications. An operation independent of the city, the Hinton Fire/Ambulance Department serves the city and rural surrounding areas. Hinton's Public Safety Building was recently built in 2012. The city recognizes the Legion as significant support entity to community well-being alongside additional community supports as specified in the discussion of Community Capabilities.

Hinton has a Police Department hosting three full-time officers. The City contracts with the county for Emergency Management. The City of Hinton is a member of the NFIP program, though residents are known to be inactive under flood insurance. A Comprehensive Plan was adopted July 18 2019. Hinton's Zoning Ordinances and Municipal Code of Ordinances updates are in progress as of May 2025.

Demographics, Housing, & Economics

Hinton is a community that has experienced fairly consistent growth for decades, with just one drop shown in decennial census numbers – between 1910 and 1920. Recent data review via CensusReporter.org⁸ provides a notable population estimate drop from 935 in 2020 to 881 in

⁸ Source: <https://censusreporter.org/profiles/16000US1936480-hinton-ia/>

2023. Local accounting is most consistent with population as determined in 2020 census records, **holding steady at 935.**

The community includes 357 households, and the median household income stands at \$108,125—well above average for the region. With only 2.5% of residents living below the poverty line, Hinton reflects a relatively affluent and economically stable community.

Hinton has a total of 369 housing units, with 358 currently occupied and just 11 vacant, indicating a high occupancy rate. There are no mobile homes in the community. Most of the housing development has occurred since 2000, with a smaller number of homes built in the 1990s and very few constructed before 1990. This points to a modern and well-maintained housing stock, reflecting the town’s growth and relatively recent residential development. As of October 2024, two additional residential developments were nearing completion and already at 75% occupancy.

Leading Employers

While not necessarily hosting a large number of employees, the following businesses operate, and have established a necessary presence, in Hinton. Additional business and organizations supporting the overall wellbeing of Hinton are included under Community supports.

- Central Valley Ag
- Hinton Community School District

Critical Facilities

City Hall	205 W Main
Hinton City Park	115 S Center St
Hinton Community Center	205 W Main St
Substation & Equip	26520 C60
Pump Station	Pump Site
Ball Park & Tractor Pull	115 S Center St
Well 4	1210 Mariner Dr
Well 6	26520 C60

Deer Run Golf Course	801 Golf Course Road
Warning Siren	315 W Grand St
Fire/Ambulance/Police Depts	308 1st Ave S
Water Booster Station	955 Springbrook Dr
Water Treatment facility	800 Golf Course Road
Michael’s Miracle Park	Valley Dr

Community Supports, Vulnerable Populations, Gathering Locations, & Local Areas of Interest

Hinton High School	315 W Grand
Hinton Middle School	315 W Grand
Hinton Elementary School	315 W Grand
Preschool & Daycare	315 W Grand (independent but onsite @ school)
3D Ag – Hardware & Supplies	1112 Starview
Hinton Baseball & Softball Fields	Golf Course Rd
Held Sports Complex	1 st Ave S
Hillview Recreation Area	25601 C60
American Legion	205 W Main St

Several additional businesses operate in Hinton. A complete list can be found on the city’s webpage

Valuation of City Assets

Total Building	\$	5,736,272
Total Personal Property	\$	597,400
Property in the Open	\$	<u>3,285,500</u>
Combined Total	\$	<u>9,619,172</u>

b. Participation

SIMPCO facilitated a mitigation planning meeting at Hinton City Hall on October 24, 2024 with the following in attendance.

- Kelly Kreber, Mayor
- Kelli Hill, City Clerk

- Kyle Utech, Public Works
- Logan Johnson, Police Department

City Council consists of residents who carried discussion of impact on local business to the table. Represented business stakeholders include Premier Communications and Weber Accounting and Tax service. Further participation was contributed via survey with 9 respondents indicating Hinton as their jurisdiction of residence in the primary survey (248 total responses) and 33 student responses from the Hinton Community School District to the student survey (65 total responses).

c. Community Capabilities

In addition to capabilities as included in the following table, Hinton also has access to resources as available through county, region, and state programs and supports. Those are identified within the region and county profiles respectively as applicable. **As previously stated, the city participates in the NFIP program with the City Clerk serving as Floodplain Administrator. The city has zero RL/SRL properties. The city adopted the updated Floodplain Ordinance, filed under Ordinance 338 on September 8, 2022. Applicable FIRM panels numbers are 19149C0468E and 19149C0631E.**

<i>Plans/Guidance Documents</i>	
Comprehensive Plan	
<i>Policies/Ordinance</i>	
<ul style="list-style-type: none"> • Building Code • Nuisance Ordinance 	<ul style="list-style-type: none"> • Subdivision Ordinance • Zoning Ordinance
<i>Programs</i>	
Zoning/Land Use Restrictions	
Hinton Disaster Plan	
National Flood Insurance Program (NFIP) Participant	CID #190224A
ISO Fire Rating	Class 5/5A (2019)
Planning/Zoning Boards	
<i>Staff/Department</i>	
Emergency Response Team	Hinton Fire and Rescue

<i>Non-Governmental Organizations</i>	
Veterans Groups	American Legion Post 477 Casper
Community Organizations	• Hinton Growth Org
<i>Local Funding Availability</i>	
Ability to apply for Community Development Block Grants	
Ability to apply for State Revolving Loan Fund programs	
Ability to fund projects through Capital Improvements funding	
Authority to levy taxes for a specific purpose	
Fees for water, sewer, and municipal electric services	
Ability to incur debt through:	<ul style="list-style-type: none"> • general obligation bonds • special tax bonds • private activities

Review of Actions Taken (Since 2019)

In addition to planned strategies, Hinton has undertaken some massive infrastructure projects such as a water treatment facility, currently in design phase, with an estimated investment of approximately \$10M. Upcoming projects include a highway reconstruction collaboration with IA DOT which will affect roadway drainage/runoff. The following table logs actions taken specific to the 2020 HMP’s identified strategies for Hinton.

communication/education		
Promo/Info	Hinton	2020: City is interested in formalizing communications with DOT to address default road closures and local authority on road closures to avoid ineffective detours; <i>City Administration & Public Works, County Engineer, Iowa DOT</i> (necessity for dedicated funds not anticipated) HIGH PRIORITY Update: Need for enhanced communications continues.
tools/equipment		
Generator & Related Projects	Hinton	2020: Generators for Lagoon Lift Station & @ 1 well location; <i>City Council, County EMA</i> (Local funds, County supports, State/Federal response funds, PDM, Community Benefits funds) HIGH PRIORITY Complete. Part 1 of this project is complete with a generator added at the well location in 2022.
Equipment	Hinton	2020: Mobile pump; <i>City Maintenance/Public Works</i> (City funds) MEDIUM PRIORITY Update. Project still needed and funds were not sourced. City expects to implement project using local funds. <i>Public Works.</i> (City funds, local community benefit funds) elevate to HIGH PRIORITY.
Equipment	Hinton	2020: ATV for use during road blockage and flood staging; <i>City Council, Streets Dept</i> (City funds, Community Benefit funds, Response support funds) MEDIUM PRIORITY

		Completed. City purchased ATV for use when roadways or points of entry are inaccessible (storm debris, etc.) in 2022.
development		
Improve existing facilities & infrastructure	Hinton	2020: Water booster to improve capacity as accesses through fire hydrants. <i>City Waterworks, Fire Chief</i> (City funds, Fire Department funds, PDM) MEDIUM PRIORITY
		Update: No specific actions were taken to address this strategy. Project closed.
Improve existing facilities & infrastructure	Hinton	2020: Lining sewer and manholes in flood plane to eliminate infiltration from flooding and water table; <i>City Maintenance & Waterworks departments, IDNR</i> (IDNR program funds, City funds, PDM) HIGH PRIORITY
		Partial Completed. Manholes were lined in 2021. Project cost not provided. Remaining work carries to 2026 HMP
Improve existing facilities & infrastructure	Hinton	2020: Repair golf course crossings damaged and washed away during high flow events. <i>City Parks Dept, City Maintenance</i> (City funds, Active Transportation funds, Healthy Community/Recreation funds, PDM) LOW PRIORITY
		Complete. Project was implemented in 2020. Project cost not provided.
Bridges & Roads	Hinton	2020: Resurface alleys due to washout during rain events. <i>City Streets Dept</i> (City funds, PDM) HIGH PRIORITY
		Update: Some resurfacing has been completed with other still pending. and is carried over to the 2026 HMP, reduced to lesser priority.
flow control		
Flood protection	Hinton	2020: Floodgates @ dike; <i>City Council, IDNR</i> (City funds, PDM) HIGH PRIORITY
		Complete. Floodgate project completed 2021-2022. Cost & fund sources not provided.
Drainage projects	Hinton	2020: Stormwater management projects - drainage improvements; <i>City Administration, Contracted services, IDNR</i> (Local funds, IDNR program funds, Disaster funds, PDM) HIGH PRIORITY
		Update: Annual road maintenance projects have included some drainage improvements. Remaining work carries to 2026 HMP.
refuge		
Shelter	Hinton	2020: Storm Shelters @ City Parks; <i>City Administration, County EMA collaboration</i> (Local funds, Improving public spaces funds, PDM) LOW PRIORITY
		Update: The Elementary School is designated as a refuge site for large scale disaster vents.
technology		
natural barriers/supports		

d. Risk Assessment

Contributing Factors

Risk assessment is an ongoing evaluation of all community infrastructure and public spaces. Unexpected flooding in 2019 highlighted the city’s need to prepare for the unexpected as well and anticipated issues. Removal of Ash Trees is a known need, however a clear plan has not yet been developed – in part due to lack of designated funds. Communication efforts are better coordinated between Hinton, nearby communities, Plymouth and Woodbury Counties, and the

IA DOT, IBC and IPMC are being considered in zoning code updates to initiate better resident preparedness for natural disasters.

A review of available Storm Event data from NOAA provides record of 7 events specific to Hinton between 11/01/2019 and 12/31/2024. Hinton likely experienced the effects of 102 Plymouth “Zone” categorized events as well. Those events are noted in the county profile under Risk Assessment.

<i>Location</i>	<i>Date</i>	<i>Time</i>	<i>Type</i>	<i>Mag</i>	<i>Dth</i>	<i>Inj</i>	<i>PrD</i>	<i>CrD</i>
HINTON	6/23/2024	3:00	Flood		0	0	0.00K	0.00K
HINTON	8/14/2020	14:25	Hail	1.75 in.	0	0	0.00K	0.00K
HINTON	8/14/2020	14:59	Hail	0.75 in.	0	0	0.00K	0.00K
HINTON	5/10/2023	23:05	Hail	1.75 in.	0	0	0.00K	0.00K
HINTON	7/4/2023	13:50	Thunderstorm Wind	56 kts. EG	0	0	0.00K	0.00K
HINTON	7/21/2023	18:06	Thunderstorm Wind	56 kts. EG	0	0	0.00K	0.00K
HINTON	4/16/2024	12:46	Tornado	EFU	0	0	0.00K	0.00K

Priority Hazards

The city identified the following as priority hazards in context of cost and general well-being of residents.

- Flood
- Severe Winter Weather
- Thunderstorm w/Hail & Lightning

Primary survey respondents from Hinton indicated Grass or Wildland Fire, Flooding (both flash and riverine), and Drought with the highest frequency of “Very Concerned”. Infrastructure Failure and Tornado/Windstorm ranked highest among top three hazards.

Hinton Schools student survey responses generally supported these issues as at least somewhat concerning. However, the three with highest frequency as most concerning are Tornado/Windstorm (19/33), Severe Winter Weather (15/33), and Pandemic Human Disease (10/33).

e. Mitigation Needs, Actions, & Strategies

communication/education		
Promo/Info	Hinton	Carry over. Some lines have improved but concern remains a factor in communicating course of action and conflicting chain of command (for example, C60 affecting County, DOT, City) as may result in road closures from varying directions and inadvertent closure of backup or designated alternate routes. City is still interested in formalizing communications with DOT to address default road closures and local authority on road closures to avoid ineffective detours <i>Public Works, County EMA, County Secondary Roads, IADOT</i> . (Intent is to use existing resources in improved format to ensure communications of intent. No additional funding needs anticipated) HIGH PRIORITY,
tools/equipment		
Generator & Related Projects	Hinton	New. This project will carry over into the 2026 plan maintaining the planned Lagoon Lift Station generator (scheduled for 2026) and the addition of need for a generator at the Public Safety Building. The project at the lagoon includes a loop connection with the Electric Company. <i>City Council, County EMA</i> (Local general budget funds, County supports, State/Federal response funds, BRIC, Community Benefits funds) HIGH PRIORITY
Equipment	Hinton	Carry over. Project still needed and funds were not sourced. City expects to implement project using local general funds. Mobile pump; <i>Public Works</i> (City funds general budget , local community benefit funds) elevate to MEDIUM PRIORITY.
	Hinton	New. City is interested in acquiring road barriers/blockade equipment for use during emergency road closure situations. <i>City Council, Public Works, Streets Dept</i> (City funds general budget , Community Benefit funds, Response support funds) MEDIUM PRIORITY
	Hinton	New. City is interested in additional ATV for general use city-wide to ensure access as needed when multiple departments are active. <i>City Council, Public Works, Streets Dept</i> (City funds general budget , Community Benefit funds, Response support funds) LOW PRIORITY
development		
Improve existing facilities & infrastructure	Hinton	Carry over. Water booster to improve capacity as accesses through fire hydrants. improvements are still desired through specific fire hydrants. Not a current over-riding concern. City will continue to seek funding opportunities to implement project. <i>City Waterworks, Fire Chief</i> (City general budget funds, Fire Department funds, BRIC as applicable) MEDIUM PRIORITY
	Hinton	Carry over. Sewer linings in floodplain to eliminate infiltration from flooding and water table. Project priority remains. <i>City Maintenance & Waterworks departments, IDNR</i> (IDNR program funds, City general budget funds, Disaster Mitigation or Response/FMA as applicable) HIGH PRIORITY
Bridges & Roads	Hinton	Carry over. Resurface alleys due to washout during rain events Oversight is the responsibility of the <i>Streets Department</i> . (local general budget) LOW PRIORITY.
flow control		
Drainage projects	Hinton	Carry over. Starview is in need of stormwater management improvements. With modified priority level, this project continues to the 2026 HMP. <i>City Administration, Contracted services, IDNR</i> (Local general budget funds, IDNR program funds, Disaster Response/Mitigation funds) MEDIUM PRIORITY

refuge		
Shelter	Hinton	Carry over. Additional shelter options needed. The City would still like to incorporate a shelter at City parks to serve as refuge site during ball games and other events. This project will carry over to the 2026 HMP, maintaining assigned priority. <i>City Administration, County EMA collaboration</i> (Local general budget funds, Improving public spaces funds, PDM) LOW PRIORITY
technology		
Improve effectiveness	Hinton	New. City has incorporated a plan to review their local Emergency Response and Emergency Operations Plans to assess and improve emergency response actions through: <ol style="list-style-type: none"> 1. Establishing a chain of command process specific to emergency type and area of effect 2. Designate command center, including alternate location if center is impacted by event 3. Identify refuge/shelter locations that may serve in a general capacity
	Hinton	New. City is working to better inform residents of pending and potential extreme weather and other hazardous events through the promotion of existing services including but not limited to Alert Iowa. <i>City Clerk</i> (no funding outside of staffing hours necessary) HIGH PRIORITY
	Hinton	New. Implementation of improved ADA access is needed for restrooms at community center and city parks. <i>Parks & Rec, Public Works</i> (local general budget funds, accessibility or multi-generational living program grants, fundraisers) HIGH PRIORITY
natural barriers/supports		

5. KINGSLEY

a. Profile

The City of Kingsley is situated on the southeast corner of Plymouth County and occupies about 1.61 square miles. The West Fork Little Sioux River runs northeast and southwest just west of the city. A floodplain intersects Kingsley running east/west, south of the centerline.

City Governance & Community Supports

Kingsley is governed by a five-person elected Council and the Mayor. **Council meets the first Monday each month at 7:00 PM.** Offices in addition to Mayor and Council include City Clerk, Water Clerk, Maintenance, Police, Fire Department, Ambulance and Rescue, Maintenance, City Attorney, and the Chamber. The Fire Department maintains a staff of about 25 volunteer firefighters. City staff has designated the Legion Hall as a significant support entity to community well-being. Additional community supports are specified in the discussion of Community Capabilities. More information on Kingsley and its services for the public can be found online at <http://kingsleyia.com/publicservices.html>.

Demographics, Housing, & Economics

Demographic estimates are sourced using the Census Reporter. Though estimates tend to fluctuate, a consistent use of a single primary source allows for similar-based comparisons between jurisdictions. An increase in Kingsley’s population was estimated from 1,396 in 2020 to 1,427 in 2023⁹. The community is home to 618 households, with a median household income of \$73,103. While the income level suggests relative economic stability, about 8.1% of the population lives below the poverty line, indicating that some residents may still face financial challenges.

Kingsley has a total of 653 housing units, with a high occupancy rate of 95% and only a small number of vacant homes. There are no mobile homes in the community. The majority of residents have moved into homes built since 2000, with fewer homes constructed in the 1990s or earlier. This indicates a predominantly newer housing stock and suggests ongoing residential development and investment in the area.

Leading Employers

As a smaller, rural community, Kingsley does not host a major employment center. The city recognizes its community support partners as leading employers. They are included in the Community Supports table.

Critical Facilities

City Hall	222 Main St
Kingsley Public Library	220 Main St
Kingsley Community Center	217 E 1 st St
Ambulance & Rescue	
Kingsley Volunteer Fire Dept	101 Clarendon St
Police Department	319 E 1 st St
City Maintenance Building	
Cemetery Building	222 Main St.

⁹ Source: <https://censusreporter.org/profiles/16000US1941385-kingsley-ia/>

Water Tower	
Lagoon Building & Controls	
Water Pump House	
Lift Station	
No. 3 Well	
Little League Field	
Loring Aquatic and Fitness Center	Quest Ave
Kingsley City Park	Park Dr & Brandon St
Tennis Court/Basketball Court	

Community Supports, Vulnerable Populations, Gathering Locations, & Local Areas of Interest

US Post Office	210 Main St
Kingsley-Pierson High School	322 Quest Ave
Kingsley Elementary School	322 Quest Ave
Kingsley Medical Clinic	111 Main St
Kingsley Nursing & Rehab Center	305 W 3 rd St,
Brookside Golf Course	101 Iowa 140
Southeast Wildwood	310 th St & Quorn Rd

Valuation of City Assets

Summation of asset values provide current replacement cost and may not include equipment and materials. Valuations are provided as a base for general application to cost-benefit analysis. Project engineering and planning will include specific related asset protections for public assets as well as private property as may be affected by the given project.

Total Building	\$	5,022,257	RC
Total Personal Property	\$	752,937	RC
Property in the Open	\$	<u>2,661,187</u>	RC
Combined Total	\$	<u>8,436,381</u>	

b. Participation

Facilitated by SIMPCO, a planning meeting was held on December 11, 2024 at Kingsley City Hall with the following in attendance.

- Angela Becker, City Clerk
- Brandon Sitzmann, Fire Chief
- Brian Book, Maintenance Manager

One survey for Plymouth County was completed with Rural Kingsley noted as place of residence. Details are included for consideration but not specified as to eliminate potential for disclosure of personal information.

A final review of Kingsley’s profile was completed by the City Clerk and Mayor Rick Bohle on February 25, 2026. Upon review, the city acknowledges changes as incorporated since their initial input meeting and confirms agreement to adopt the plan once approved by FEMA.

c. Community Capabilities

<i>Policies/Ordinance</i>	
<ul style="list-style-type: none"> • Floodplain Ordinance • Nuisance Ordinance 	<ul style="list-style-type: none"> • Open Burn Ordinance • Zoning Ordinance
International Property Code adopted May 2019	
<i>Programs</i>	
Zoning/Land Use Restrictions	
National Flood Insurance Program (NFIP) Participant	CID #190477A
ISO Fire Rating	Class 6/8B
Planning/Zoning Boards	
<i>Staff/Department</i>	
Public Works Official	
Building Inspector	
Emergency Response Team	Fire Dept, Ambulance & Rescue, Police Dept
Regional Planning Agencies	SIMPCO and Iowa League of Cities
<i>Non-Governmental Organizations</i>	
Veterans Groups	American Legion Nash Post 140
Chamber of Commerce	
Community Organizations	<ul style="list-style-type: none"> • Kingsley Community Action Club (KCAC) • School Clubs

	<ul style="list-style-type: none"> • Booster Club • 4-H
<i>Local Funding Availability</i>	
Ability to apply for Community Development Block Grants	
Ability to fund projects through Capital Improvements funding	
Authority to levy taxes for a specific purpose	
Fees for water & sewer services	Water and Sewer
Ability to incur debt through:	<ul style="list-style-type: none"> • general obligation bonds • special tax bonds • private activities

Kingsley has adopted by reference the 2024 IBC into their building code. The city participates in the NFIP program with the Mayor serving as Floodplain Administrator. Despite participation, the majority of residents are known to be inactive under flood insurance. Kingsley has zero RL/SRL properties.

Review of Actions Taken (Since 2019)

Kingsley has implemented several projects to improve its sustainability in the event of a natural disaster and other hazards. They’ve initiated a water main replacement project in 2024, purchased a generator for the community center to substantiate its designation as a refuge/shelter location (approximate cost @ \$50,000, install not funded and included in new project list), and the fire department has new pump trucks and a new fire station. The new building increases storage capacity, increasing flexibility of City Maintenance/Police Department building.

Always willing to take advantage of collaborative training opportunities, Kingsley hosted a region-wide full scale hazardous material response exercise October 2024. The exercise included a transportation-related hazardous materials incident simulation involving response interactions with 5 participating counties and a third-party administration team. Kingsley prioritizes preparedness and continues to demonstrate that focus in project planning.

The city has included tree maintenance as a line-item in its budget addressing necessary removals and replacement. The city is addressing removal of dead/diseased/at risk trees in the

parking first, with 25 planned per year. Trees in parking will not be replaced, however other public spaces will assume the balance of new trees.

communication/education		
tools/equipment		
Generator & Related Projects	Kingsley	2020: Generators needed at lift station, water plant, and lagoon; <i>City Council, County EMA</i> (Local funds, County supports, State/Federal response funds, PDM, Community Benefits funds) HIGH PRIORITY
		Completed. Generators are in place at the lift station and lagoon. Additional components will be carried over.
development		
flow control		
Drainage projects	Kingsley	2020: Terracing needed to ease floodplain restrictions. <i>City Administration, County Engineer collaboration, IDNR, Contracted services</i> (Local funds, County funds, IDNR Program funds, USDA program funds/loan program, Disaster funds, PDM) LOW PRIORITY
		Project closed. Updated floodplain resources decreased significance of potential impacts to indicated areas, thereby removing restrictions. City will continue to consider opportunities for terracing when implementing projects, however, this item has been removed from the priority list.
refuge		
technology		
natural barriers/supports		

d. Risk Assessment

Contributing Factors

As mentioned, Kingsley has floodplain running through town, just south of center. The Golf Course and undeveloped greenspace fills most of the designated area, though a few industries may be affected. The city has two warning sirens, audible throughout city limits. Kingsley has 15 reported weather events in the NOAA Storm Event Database between 11/01/2019 and 12/31/2024. Eleven of those events were from varying sources in response to a single event. Unchanged from 2020, Thunderstorm, Tornado, and Hail were notable locally while Drought was significant in Plymouth County and the region.

<i>Location</i>	<i>Date</i>	<i>Time</i>	<i>Type</i>	<i>Mag</i>	<i>Dth</i>	<i>Inj</i>	<i>PrD</i>	<i>CrD</i>
-----------------	-------------	-------------	-------------	------------	------------	------------	------------	------------

KINGSLEY	12/15/2021	16:38	Thunderstorm Wind	72 kts. EG	0	0	0.00K	0.00K
KINGSLEY	12/15/2021	16:39	Thunderstorm Wind	72 kts. EG	0	0	25.00K	0.00K
KINGSLEY	12/15/2021	16:39	Thunderstorm Wind	78 kts. EG	0	0	20.00K	0.00K
KINGSLEY	12/15/2021	16:40	Thunderstorm Wind	82 kts. EG	0	0	30.00K	0.00K
KINGSLEY	12/15/2021	16:40	Thunderstorm Wind	83 kts. EG	0	0	35.00K	0.00K
KINGSLEY	12/15/2021	16:41	Thunderstorm Wind	74 kts. EG	0	0	25.00K	0.00K
KINGSLEY	12/15/2021	16:41	Thunderstorm Wind	72 kts. EG	0	0	30.00K	0.00K
KINGSLEY	12/15/2021	16:44	Thunderstorm Wind	69 kts. EG	0	0	20.00K	0.00K
KINGSLEY	12/15/2021	16:44	Thunderstorm Wind	65 kts. EG	0	0	25.00K	0.00K
KINGSLEY	12/15/2021	16:47	Thunderstorm Wind	64 kts. EG	0	0	5.00K	0.00K
KINGSLEY	12/15/2021	16:39	Tornado	EF1	0	0	50.00K	0.00K
KINGSLEY	5/12/2022	18:30	Thunderstorm Wind	70 kts. EG	0	0	0.00K	16.00K
KINGSLEY	8/18/2022	18:22	Hail	1.50 in.	0	0	0.00K	0.00K
KINGSLEY	7/29/2024	23:00	Thunderstorm Wind	65 kts. EG	0	0	0.00K	0.00K
KINGSLEY	7/29/2024	23:08	Thunderstorm Wind	74 kts. EG	0	0	0.00K	0.00K

In addition to the above reports specific to Kingsley, the city also experienced the general effects of 102 events noted under Plymouth (County) “Zone”.

Priority Hazards

Discussion included Infrastructure Failure and costs associated with Severe Winter Storm. However, the city indicated the following as primary hazard concerns for the city.

- Tornado
- Flooding
- Grass and Wildland Fire

e. Mitigation Needs, Actions, & Strategies

communication/education		
Promo/Info	Kingsley	New. PSAs - Improve communications of existing programs and systems as available including but not limited to Alert Iowa, Increasing water intake during extreme heat and/or extreme dry conditions; water conservation (drought considerations); Red Flag warning awareness; Lightning safety, Snowstorm/Heavy snow safety, Tornado safety.

		These activities are intended to reduce risk of life and loss/damage to property. <i>City Clerk, County EMA (no funds needed) HIGH PRIORITY</i>
tools/equipment		
Generator & Related Projects	Kingsley	Carry over. Generators needed at water plant. A portion of the backup power needs are included in the Water Plant. Replacement project slated for FY2026. Estimated project budget is \$5.5M. <i>City Council, County EMA (Local general budget funds, County supports, State/Federal response funds, BRIC, Community Benefits funds, USDA) HIGH PRIORITY</i>
Generator & Related Projects	Kingsley	New. The city has purchased a generator (\$50,000) for the community center. Funds have not yet been fully designated for installation. Cost to be determined pending correlation to other like projects. City Council, Public Works, County EMA as may be needed. (Local general budget funds, safety/emergency response funds as may be available, pre-disaster/mitigation funds as may be available. HIGH PRIORITY
development		
flow control		
refuge		
technology		
natural barriers/supports		

6. LE MARS

a. Profile

Serving as county seat, the City of Le Mars is situated near the center of Plymouth County. U.S. Highway 75 stretches north/south, primarily just outside city boundaries. Iowa Highway 3 stretches east/west through the city, before angling north and following east toward Cherokee. Iowa Highway 60 is accessible north of the city. The City of Le Mars accounts for the largest population and spatial area of Plymouth County occupying 8.9195 square miles. The Floyd River runs through Le Mars, following outside much of its east and north borders.

City Governance & Community Supports

Le Mars is governed by a five-person elected Council and the Mayor. Offices in addition to Mayor and Council include are as provided.

- Airport
- Library Trustees
- Board of Civil Service Commission
- Board of Zoning Adjustment Commission
- City Clerk

- Community Development/Code Enforcement
- Convention and Visitors Bureau
- Disaster Services Coordinator
- Finance Dept
- Fire-Rescue Department
- Historic Preservation Commission
- Hospital Trustee Board
- Mapping
- Park and Recreation Committee
- Planning and Zoning Commission
- Police Department
- Public Facilities
- Streets
- Waste and Recycling
- Wastewater Treatment
- Water Department

The Le Mars Fire-Rescue department has about 50 volunteers and is funded by a combination of township fire fees, city taxes, and fund-drive donations. The department provides coverage and protection extending 8 miles from City Limits and approximately 200 square miles of rural territory including all or partial areas of seven townships and five additional small communities/villages.

The City of Le Mars is a member of the NFIP, though residents are known to be inactive under flood insurance. A Community Development Plan was adopted in 2023.

Demographics, Housing, & Economics

Using the online Census Reporter¹⁰ estimates, Le Mars' population of 10,597 (2023) shows a slight increase from 2020's decennial census (10,571) reflecting steady community growth. The city includes 4,356 households and boasts a median household income of \$72,381, which suggests a relatively strong local economy. Despite this, about 8.9% of residents live below the poverty line, indicating that some households may still face economic challenges. Overall, Le Mars continues to show signs of stability and growth while maintaining a solid economic foundation.

Census.gov table [B25034 - Year Structure Built](#)¹¹ estimates the total number of houses in Le Mars to be 4,521 with approximately 88 of those homes built after 2020 and about 17% of total

¹⁰ Source: <https://censusreporter.org/profiles/16000US1944400-le-mars-ia/>

¹¹ <https://data.census.gov/table/ACSDT5Y2023.B25034?q=houses+year+built&g=160XX00US1944400>

stock built 2000 or later. Table H1 – Occupancy Status¹² estimates show housing at 225 vacant. Local perception indicates a much lower vacancy rate when considering move-in-ready homes as the market remains very tight. Online real estate resources indicate a range of 30 – 35 homes for sale as of May 2025, and up to 22 units for rent. Census data shows an estimate of 329 mobile homes¹³, representing about 7.6% of the total housing units available.

Leading Employers

As one of the larger communities in the planning region, Le Mars hosts a larger employee-base than resident population affecting its approach to effectively managing emergency response.

The following businesses are among the largest in the jurisdiction.

- BoDeans Baking Co.
- Floyd Valley Healthcare
- Iowa National Guard
- Kemps
- Le Mars Community Schools
- Schuster Trucking Co.
- Wells Enterprises Inc.

Several expansions and investments were completed in recent years.

- Wells Enterprises completed multiple additions to their facilities
- Floyd Valley Healthcare completed a \$10M specialty clinic and therapy expansions project
- Schuster Trucking added a \$4M maintenance building

Critical Facilities

<i>City Facilities</i>	
City Hall	40 Central Ave. SE
Police Department	205 5th Ave NW
Fire Rescue Department	45 1st Ave. SW, Station No. 1
Fire Station #2	25 - 12th St SE

¹² <https://data.census.gov/table?q=home+occupancy&g=160XX00US1944400>

¹³ <https://data.census.gov/table/ACSST5Y2023.S2504?q=home+occupancy&g=160XX00US1944400>

Garage (FD)	45 1st Ave SW
Airport & Related	1621 Airport Drive
Public Works Bldg	800 18th St SW
Storage Facilities for various Depts	multiple addresses
Water Department & Treatment	1298 18th St. SW
Water Towers	1002 3rd Ave SE
	33082 200 th St
Well Houses	multiple addresses
Wastewater Treatment & Related	705 5th Ave NW
	17505 Key Ave
Lift Stations/Pumps	multiple addresses
Booster Station	33082 200th St
Misc Waterworks, Bldgs & Property	100 Park Lane Rd
Kemps Electrical Ctrl Bldg	1078 Lincoln St SW
Shed	301 9th Ave
Office Bldg	50 Central Ave
8 Warning Sirens (+1 planned for 2025)	Various locations
<i>Outdoor Recreation</i>	
Adler Park	Plymouth St SE
Bolser Park	2nd St & 5th Ave SE
Cleveland Park	2nd St & 6th Ave S.E.
Courts; Park; Golf Course; Related	935 Park Lane
Dog Park	Holton Dr
Foster Park	Central Ave & 6th St S.E.
Le Mars Area Family YMCA	241 12th St SE
Municipal Park	813 Park Ln
O'Toole Park	Central Ave & 4th St N.E
Outdoor Swimming Pool & Park	241 12th St SE
Paulin Park	12th St & 7th Ave S.E
Riverview Complex	N of Hwy 3
Schafer Park	15th St & Schafer Ave SE
Sunset Park	Holton Dr
Veterans Memorial Park	3 rd Ave SE & 10 th St
Walnut Park	11th St & Central Ave SE
West Floyd Park	3rd St & 12th Ave SW
Westmar Memorial Park	10th St SE

Willow Creek Campground	4 th Avenue NE & Park Lane
<i>Cultural and Wellness</i>	
Veterans Memorial Park & related	3rd Ave SE @ 10th St SE
Olson Cultural Events Center	33 1st St NE
Post 21 Playhouse	105 1st St NE
Le Mars Sportsman Club	31549 C38
Civic Art Center	200 Central Ave SE
Royal Theatre	33 Central Ave SW
Le Mars Convention Center	275 12th Street SE
Le Mars Public Library	46 1st St SW
<i>County facilities</i>	
Plymouth County Historical Museum	335 1st Ave SW
Plymouth County Fairgrounds	500 4th Ave. NE
Plymouth County Veterans Memorial	1000 3rd Ave SE

It is important to note that as County Seat, several county facilities and services as listed in the Plymouth County Profile are hosted in Le Mars.

Community Supports, Vulnerable Populations, Gathering Locations, & Local Areas of Interest

Le Mars High School	921 3rd Ave SW
Individualized Learning Center	940 Lincoln Street SW
Le Mars Middle School	977 3rd Ave SW
Clark Elementary School	201 2nd Ave NW
Franklin Elementary School	400 3rd Ave SE
Kluckhohn Elementary School	1338 Central Ave SE
Floyd Valley Community Health Service	714 Lincoln St NE
Floyd Valley Healthcare	714 Lincoln St NE
Good Samaritan Society - Le Mars	1140 Lincoln St NE
Park Place Estates	900 Lincoln St NE
Plymouth Manor Care Center	954 7th Ave SE
Pride Group Inc.	214 Plymouth Street SE
PRIDE 1 - Residential Care Facility	214 Plymouth Street SE
Prime Living Apartments	108 1st Ave NW
Blue Bunny Museum and Meeting Center	115 Central Ave NW
Mobile Homes & Mobile Home Courts	930 4 th St SW

	500 block 6 th Ave SW
	100 16 th Ave NW
Apartment Complexes	Multiple addresses

Valuation of City Assets

The following summation of city assets is intended to provide a foundation for cost-benefit analysis for mitigation projects. This total is not all inclusive and does not take into account private properties, businesses, residences, and other financial considerations as may be impacted through pre-disaster and resiliency-building efforts. A full cost-benefit analysis will accompany project descriptions in the application process where relevant.

Total Vehicle Value	\$	6,553,061
Blanket TIV	\$	149,425,314
Building	\$	145,506,894
Personal Property	\$	3,918,420
Misc Property Sched	\$	3,147,055
Misc Property Unsched	\$	<u>1,218,777</u>
Total TIV	\$	<u>153,791,146</u>

b. Participation

Facilitated by SIMPCO and Plymouth County EMA Rebecca Socknat, a planning meeting was held October 24, 2024 at the Le Mars City Council Chambers with the following in attendance.

- Jason Vacura, City Administrator
- Jan Feller, City Clerk
- Joe Mohning, Finance/HR Director
- Brad Epling, Public Facilities
- Scott Kneip, Streets
- Doug Masuen, Wastewater Superintendent
- Rich Sudtelgte, Water Superintendent
- David Schipper, Fire Chief
- Shirley Taylor, Library Director
- Tom Mullally, Airport Manager

Also considered for discussion are 37 responses to the survey noting Le Mars as residence.

c. Community Capabilities

<i>Plans/Guidance Documents</i>	
Community Development Plan (2023)	
2015 Builder’s Plan	
Capital Improvement Plan	
Le Mars Emergency Operation Disaster Preparedness Plan	
Land Use Plan	
Firewise or other fire mitigation plan	Le Mars Fire Department
<i>Policies/Ordinance</i>	
<ul style="list-style-type: none"> • Building Code • City Code (2019) • Debris Management Plan • Drainage Ordinance • Floodplain Ordinance • Historic Preservation Ordinance 	<ul style="list-style-type: none"> • Landscape Ordinance • Nuisance Ordinance • Storm Water Ordinance • Subdivision Ordinance • Tree Trimming Ordinance • Zoning Ordinance
<i>Programs</i>	
Codes Building Site/Design	Code Enforcement
Hazard Awareness Program	<ul style="list-style-type: none"> • Disaster Preparedness Plan • Plymouth Co Alerts (through Alert Iowa) – text/email
ISO Fire Rating	Class 2/2Y
Mutual Aid Agreements	<ul style="list-style-type: none"> • Countywide 28E • SCFR through County for HazMat Response
National Flood Insurance Program (NFIP) Participant	CID #190225A
Planning/Zoning Boards	
Property Acquisition	guided via Iowa ROW Manual
Tree Trimming Program	
Zoning/Land Use Restrictions	
<i>Staff/Department</i>	
Code Enforcement Officer	
Community Development	
Building Inspector	
NFIP Floodplain Administrator	City Administrator
Coordinator of Disaster Services	City Administrator

Emergency Response Team	Fire and Rescue (Ambulance integrated to department)
Historic Preservation	Historic Preservation Commission
Mapping Manager	
<i>Non-Governmental Organizations</i>	
Community Organizations	
<ul style="list-style-type: none"> Le Mars Business Initiative Corp Lions Kiwanis 	<ul style="list-style-type: none"> Optimists Rotary
Homeowner Associations in select neighborhoods	
Le Mars Area Chamber of Commerce	
Neighborhood Associations in select subdivisions	
Veterans Groups	American Legion Wasmer Post 241
<i>Local Funding Availability</i>	
Apply for Community Development Block Grants	
Fund projects through Capital Improvements funding	
Levy taxes for a specific purpose	
Fees for water & sewer, stormwater, and solid waste services	
Ability to incur debt through:	<ul style="list-style-type: none"> general obligation bonds special tax bonds private activities
Withhold spending in hazard prone areas	Yes

The city participates in the NFIP program with the City Administrator serving as Floodplain Administrator. The city has zero RL/SRL properties. The city's floodplain ordinance is recorded as Ordinance #974 adopted on 9/20/22. FIRM Panel numbers of record are as follows: 19149C0284E, 0287E, 0288E, 0289E, 0291E, 0292E, 0293E, 0294E, & 0477E.

Review of Actions Taken (Since 2019)

communication/education		
Assessment/Study	Le Mars	2020: Flood Risk Options Study. Improve elevation of roadway @ 4th Ave NE (Mahogany Ave). Primary access road to this portion of town, limiting access for response teams. A full study on options is needed in preparation of presenting issue of road closure to resident. <i>City Administrator, Engineer, County Roads communication, IDOT (City funds, Planning funds, IDNR/IDOT programs, State/Federal programs, TIP, CIP) HIGH PRIORITY</i>

Assessment/Study	Le Mars	Project closed. Surveys were completed and discussion held with IDNR, Army Corps of Engineers to assess potential improvements. Determination that a bridge is the only solution is not a feasible project for the City to consider. No further action is planned regarding this issue.
tools/equipment		
development		
Improve existing facilities & infrastructure	Le Mars	2020: Pedestrian bridge connecting rec trail to golf course. In interest of maintaining natural open spaces, and recoup loss due to lack of development in those areas, the city has invested in a thriving outdoor recreation network. Intending to be interconnected, rec trails connect most facilities. At present, a pedestrian bridge that connects the rec trail to the golf course is in need of major renovation or replacement. A temporary bridge is in place but it is not a long-term solution. The city is determining the best solution for the trail bridge, therefore costs are not yet determined. <i>City Administrator, Streets, Parks Depts</i> (City funds, Active Transportation funds, Health & Wellness program funds, Transportation Alternatives Program funds, Community Benefit funds) HIGH PRIORITY
Improve existing facilities & infrastructure	Le Mars	Update: Active implementation. Funding for this project are in place with work planned for 2025/2026. City streets and parks departments are involved in oversight. TAP funds with local match from City budget will cover project.
flow control		
Flood protection	Le Mars	2020: Airport Flooding Protection - Implement protections to minimize erosion damage to runway & property overall. Floyd River w/in 50" of north end of runway. Measures to further improve previous bank stabilization efforts. Option: Reroute river; channelize. <i>City Administrator, Airport administration, IDNR</i> (Local funds, Economic Development funds, PDM) HIGH PRIORITY
Flood protection	Le Mars	Update: Project was not implemented and will be carried over to the 2026 HMP.
refuge		
technology		
natural barriers/supports		

d. Risk Assessment

Contributing Factors

As presented throughout this profile, the abundant employment centers in Le Mars add an urgency to ongoing training and capacity building for the city’s emergency response teams. Response teams must coordinate with each other as well as their industry partners, to correctly

determine the number of people in an area at any given time. Fortunately, the city has an active Disaster Plan and formal Response Team in place. Each role is clearly identified noting chain of command so no communications are lost. Corporate safety teams routinely cross-train with city responders to facilitate the process.

LE MARS, Iowa (AP) — An explosion Wednesday morning destroyed two houses in the northwest Iowa city of Le Mars and injured three people.

The 6:30 a.m. explosion demolished two adjacent houses and damaged a third house, Le Mars Fire-Rescue Chief Dave Schipper told the [Sioux City Journal](#).

The three people who were injured were inside or around one of the homes. Two of them were taken to a Le Mars hospital and one was taken to a Sioux City hospital and later transferred to a burn center in Lincoln, Nebraska.

Schipper called it “very fortunate” that no one died in the explosion, which he thinks was caused by a gas leak.

<https://apnews.com/article/explosions-fires-iowa-city-des-moines-1d9b3487db6ad7d0002dbe65f9f4af2e> *Le Mars explosion injures 3 people, destroys homes.* by Tim Hynds, Sioux City Journal via AP; Published 1:38 PM CDT, July 13, 2022) June 10, 2025

Despite ongoing efforts to improve flood-prone areas, the intersecting waterways in and around the city remain a primary consideration in all planning efforts. Flooding in 2024 resulted in more significant damages than previously recorded, especially in and around the town’s ball fields and trails.

Due to relative proximity, the NOAA Storm Event database search for Le Mars included the Le Mars Municipal Airport and West Le Mars in addition to the city itself. Between 11/01/2019 and 12/31/2024, 6 events were recorded with Thunderstorm Wind figuring prominently, with Hail, Tornado, and Flood noted at one occurrence each.

Location	Date	Time	Type	Mag	Dth	Inj	PrD	CrD
LE MARS	10/20/2021	8:17	Hail	0.88 in.	0	0	0.00K	0.00K
LE MARS	8/27/2021	0:16	Thunderstorm Wind	51 kts. MG	0	0	0.00K	30.00K
LE MARS	7/29/2024	22:55	Thunderstorm Wind	61 kts. EG	0	0	0.00K	0.00K

LE MARS MUNI ARPT	8/5/2023	17:25	Thunderstorm Wind	62 kts. MG	0	0	5.00K	0.00K
LE MARS MUNI ARPT	7/29/2024	22:52	Thunderstorm Wind	56 kts. EG	0	0	0.00K	0.00K
LE MARS MUNI ARPT	7/29/2024	22:52	Thunderstorm Wind	54 kts. MG	0	0	0.00K	0.00K
WEST LE MARS	4/16/2024	12:48	Tornado	EFU	0	0	0.00K	0.00K
WEST LE MARS	6/22/2024	18:00	Flood		0	0	0.00K	0.00K

By **Klem Web Team** - Jun 24, 2024



<https://klem1410.com/2024/06/24/record-flood-at-le-mars/>

Record Flood at Le Mars (by [Klem Web Team](#) - Jun 24, 2024)

June 10, 2025

RECORD FLOOD AT LE MARS

Record floodwaters isolated Le Mars for a time, and the city is just now starting to weigh the impact of the flood.

Le Mars had a crest of 29 feet, which was just below the record crest of 26.4 feet.

Le Mars Fire Rescue Chief Dave Schipper said during their flood preparations, they discovered water would come in even higher than predicted.

Priority Hazards

In recent history, flooding is of the greatest concern, resulting in high expense repairs/recovery. The top three identified priorities are determined by likelihood of occurrence, cost of resulting damages, and potential impact on residents as well as the expansive and transient employee base.

- Flood – both Flash and Riverine
- Tornado/Windstorm
- Hazardous Materials Incident

Transportation Incident and Severe Winter Storm are also of significant concern. Particularly at risk are disaster-related blockages affecting the highways and railroad. Potential for bulk spills due to derailment can be catastrophic in terms of access and exhaustion of available supplies. Dam/Levee Failure and most other hazards as identified by the state are on the radar. Severe Winter Storm, Drought, and Extreme Heat factor considerably in local agriculture and manufacturing industries.

Survey responses indicate the top three resident concerns to be fairly consistent with the city’s determination, replacing Hazardous Materials Incidents with Severe Winter Storm. Thunderstorm w/Hail and Lightning also has a high frequency of notable concern.

e. Mitigation Needs, Actions, & Strategies

communication/education		
Assessment/Study	Le Mars	New. Floyd River Redirection Study to address ongoing flood concerns as each recurring heavy flow and river flooding events decrease unaffected area surrounding the airport. Flow currently hooks around north end of runway, looping around again eastward at the south end. South end is progressively shifting east creating an unplanned contact point. The City would like to review options to redirect flow to protect its airport. <i>City Administrator, County departments as applicable, IDNR, State and Federal programs as may be applicable, contracted engineer.</i> (Local general budget funds, BRIC/FMA technical support, other grants) HIGH PRIORITY
Promo/Info	Le Mars	New. PSAs - Improve communications of existing programs and systems as available including but not limited to Alert Iowa, Increasing water intake during extreme heat and/or extreme dry conditions; water conservation (drought considerations); Red Flag warning awareness; Lightning safety, Snowstorm/Heavy snow safety, Tornado safety. These activities are intended to reduce risk of life and loss/damage to property. <i>City Clerk, County EMA (no funds needed)</i> HIGH PRIORITY
Warning Sirens	Le Mars	New. New warning siren at 34 th & Lake is planned for 2025. <i>City Administrator (Local CIP)</i> HIGH PRIORITY
tools/equipment		
development		
	Le Mars	New: Install new water main valves to improve flow control and access for maintenance. <i>Public Works.</i> (Local funds general budget) HIGH PRIORITY.

Improve existing facilities & infrastructure	Le Mars	New. Several waterworks projects are planned including a new reverse osmosis system, well, waterlines between wells. <i>City utilities.</i> (Local funds general budget , utility rates) HIGH PRIORITY
	Le Mars	New. City is planning new waste water treatment facility. <i>City utilities, public works.</i> (Local funds general budget , state/federal program supports as may be available) HIGH PRIORITY
	Le Mars	New. New Fire Station facility slated for 2028, with a ballot measure to be brought in 2026. Project includes new buildings and storage shed. <i>Fire Department.</i> (Local funds general budget , EOC funds). HIGH PRIORITY
Bridges & Roads	Le Mars	New. Action needed to improve conditions where Willow Creek meets the Floyd River. Increase in occurrence of flood events has highlighted lack of capacity of small railroad bridge crossing that area to handle such a large volume of water. If bridge is washed out, a significant impact would be felt regionally and potentially at the national level pending severity of damage. <i>City administrator, County departments as applicable, railroad, DOT, contracted consultant as applicable.</i> (local general budget funds, BRIC/FMA, railroad programming, IDOT) HIGH PRIORITY
flow control		
Flood protection	Le Mars	Carry over. Airport Flooding Protection - Implement protections to minimize erosion damage to runway & property overall. Floyd River w/in 50" of north end of runway. Measures to further improve previous bank stabilization efforts. Option: Reroute river; channelize. <i>City Administrator, Airport administration, IDNR</i> (Local funds, Economic Development funds, PDM) HIGH PRIORITY
	Le Mars	Carry over. Further efforts are needed to stabilize riverbanks and creekbanks to control or direct flow from Floyd River and Willow Creek, especially when in high water stages, from both riverine and flash flood events. North and South ends of airport are increasingly at risk as high flow rate of water continues to reform the Floyd River. Bridges at 24 th Street and the RR bridge at 4 th Ave NE and the walking bridge at Hwy 3 are faced with structure failure risk increasing with each high water event, as placement in proximity to river is changing. Issue is becoming increasingly urgent. Cost estimate not readily available. <i>City Administrator, Airport administration, IDNR</i> (Local general budget funds, Economic Development funds, PDM) HIGH PRIORITY
refuge		
technology		
natural barriers/supports		

7. MERRILL

a. Profile

The City of Merrill is situated near the center of Plymouth County, just south of Le Mars City. US Highway 75 is the main road that travels north-south through the eastern portion of Merrill. Floyd River defines the path of Hwy 75, following northeast outside the city's immediate corporate boundaries. BNSF railroad has a line that runs through Merrill, intersecting the highway and separating a portion of Merrill's downtown from the rest of the city.

City Governance & Community Supports

Merrill is governed by a five-person elected Council and the Mayor. Offices in addition to Mayor and Council include City Clerk, Police Department, Ambulance Department, Maintenance Department, Library, and EDC Department. The Merrill Fire Department is staffed by 22 volunteer firefighters. City staff designates the Legion Hall as a significant support entity to community's well-being. Additional community supports are specified in the discussion of Community Capabilities.

Merrill contracts with the county for law enforcement and Emergency Management. The City of Merrill is a member of the NFIP program, though residents are known to be inactive under flood insurance.

Demographics, Housing, & Economics

Merrill had an estimated population of 885¹⁴ in 2023, reflecting an increase from 717 residents in 2020 decennial census numbers. The city is home to 343 households and has a median household income of \$79,250, suggesting a relatively strong economic standing. With only 4.5% of the population living below the poverty line, Merrill appears to be a financially stable community overall.

In 2023, Merrill had a total of 382 housing units, with 343 of them being occupied, which accounts for 90% of the units. There are 38 vacant units, making up 10% of the housing stock. The community also includes 19 mobile homes, which represents 5% of the housing units. In terms of the age of the residential structures, 233 units were built before 1990, while 53 were constructed between 1990 and 1999, and another 53 were built in 2000 or later. This distribution highlights a mix of older and newer housing in Merrill.

Leading Employers

- Casey's
- Iowa State Bank
- US Post Office
- Hometown Mobility
- Plymouth Energy LLC
- Wells (Le Mars)

¹⁴ Source: <https://censusreporter.org/profiles/16000US1951375-merrill-ia/>

Critical Facilities

City Hall & Community Center	608 Main St
Senior Center	
Library-Kissinger Ctr	
Police Department	
Fire Station	500 Roosevelt
EMS / Ambulance Department	
Garage Mntc Shop	301 2 nd St
Sewer Lift Station	100 E Main St
	19 5 th St
Warning Siren	635 Center St
	205 Calhoun St
	725 Webster St
Merrill Community Park & Related	725 Webster
Park & Related	700 Webster
Misc Storage	331 2 nd St
Water Treatment; Pump House & related	635 Center St
(RV Only) Campground	23 5 th St

Community Supports, Vulnerable Populations, Gathering Locations, & Local Areas of Interest

In addition to those businesses listed under leading employers and various city facilities, the city recognizes the following as community gathering spots/events that may temporarily reflect a higher than average concentration of the local population.

- Cugini's Italian Restaurant
- Merrill Food Truck Night (Wednesdays)
- Merrill Shooting Range

Valuation of City Assets

Total Building	\$	7,867,875
Total Personal Property	\$	876,779

Total Property in the Open \$ 1,065,799
Combined Total \$ 9,810,453

b. Participation

Facilitated by SIMPCO and Plymouth County EMA Rebecca Socknat, a mitigation planning meeting was held February 14, 2025 via Teams with the following in attendance.

- Bruce Norgaard, Mayor
- Angela Gray, City Clerk
- Pat Gray, Public Works

c. Community Capabilities

<i>Plans/Guidance Documents</i>	
Comprehensive Plan	
Land Use Plan	
<i>Policies/Ordinance</i>	
Zoning Ordinance	within City Code
Floodplain Ordinance	within City Code
Drainage Ordinance	In covenants for HOAs
<i>Programs</i>	
National Flood Insurance Program (NFIP) Participant	CID #190478A
ISO Fire Rating	Class 6/9
<i>Staff/Department</i>	
Public Works Official	
Emergency Response Team	Fire and Rescue
<i>Non-Governmental Organizations</i>	
Veterans Groups	American Legion Oleson-Halweg
Chamber of Commerce	
<i>Local Funding Abilities</i>	
Apply for Community Development Block Grants	
Fund projects through Capital Improvements funding	
Authority to levy taxes for a specific purpose	

Fees for water and sewer services	
Ability to incur debt through:	<ul style="list-style-type: none"> • general obligation bonds • special tax bonds • private activities

The city has adopted by reference the IBC and IPMC, with applicable exceptions as currently implemented at the state level. Merrill’s Community Development department oversees compliance for construction/development activities in relation to building codes, land development code, the Comprehensive Plan, and enforcement thereof. **The city participates in the NFIP program with the City Clerk serving as Floodplain Administrator. Merrill has zero RL/SRL properties.**

Review of Actions Taken (Since 2019)

communication/education		
tools/equipment		
development		
flow control		
Drainage projects	Merrill	2020: Improve ditch and drainway management. Conduct through clearing and implement maintenance plan. <i>City Council, City staff</i> (Local funds) HIGH PRIORITY
Drainage projects	Merrill	Update. Issues addressed at north end of town including routine maintenance. Problems still present with particular concern over riverine flooding. Additional attention is needed to determine prevention options. Ditch maintenance is ongoing and will continue. New project added for 2025 for other options to be determined.
refuge		
Shelter	Merrill	2020: Interest in designating refuge locations at City Park and Campgrounds. Structural enhancements to be considered for formal designation. <i>City Council, City staff County EMA as applicable.</i> (local funds, community benefit programs, local groups, fundraising)
		Update. No action taken due to lack of dedicated funding options. Project is still needed and carries into the 2026 HMP project list. Priority is due to funding constraints, not level of need.
technology		
natural barriers/supports		
Dike improvement	Merrill	2020: Implementation of improvements to substantiate dike as barrier to flooding. <i>City Council, County, and DNR collaboration as applicable.</i> (Local funds)
Dike improvement	Merrill	Update. Cells were raised in lagoon project completed in 2019. Area was still severely impacted by floods in 2024 necessitating further consideration and expanded options.

In addition to updates as provided for planned projects in the 2020 Plan, the City of Merrill implemented several project components contributing to community resiliency.

- Backup generator at lift station
- Generator hookup at well (for mobile generator connection)
- Water access plan in place
- Highway work is planned with stormwater controls in place. Project is expected to retain those features sustaining drainage during and after construction

The city engaged IDNR to map ash trees throughout the community with findings indicated most are on private property. The city has plans in place to 1.) remove trees as affected and 2.) plant 6-8 new trees annually. Some mitigation efforts were implemented for the lagoon, however flooding in 2024 indicated a greater need that that addressed. Several other projects benefitting community resilience include the following.

d. Risk Assessment

Contributing Factors

An assessment of records in the NOAA Storm Event database include three reports from Merrill.

<i>Location</i>	<i>Date</i>	<i>Time</i>	<i>Type</i>	<i>Mag</i>	<i>Dth</i>	<i>Inj</i>	<i>PrD</i>	<i>CrD</i>
MERRILL	8/31/2020	3:37	Hail	1.00 in.	0	0	0.00K	0.00K
MERRILL	4/19/2023	19:39	Hail	1.00 in.	0	0	0.00K	0.00K
MERRILL	4/16/2024	13:10	Thunderstorm Wind	56 kts. EG	0	0	0.00K	0.00K

Some areas housing critical facilities were raised in 2018/2019. Despite those efforts, flooding as occurred in 2024 affected the city’s lagoon located on the east side of the river, outside the city’s formal boundary. Resulting in severe damages, the FEMA recovery process was underway at the time of the planning meeting. The city is interested in determining viable solutions to reduce the impact of future flood events (see 2026 projects table).

The presence of a high frequency rail line intersecting US-75 and cutting through town adds to concerns about Transportation Incidents and Hazardous Materials Incidents.

Priority Hazards

The city continues to consider the following as priority hazards, with the addition of Thunderstorms with Hail and Lighting as being the most prevalent and most likely to result in damage.

- Thunderstorm with Hail and Lightning
- Flooding
- Tornado/Windstorm
- Severe Winter Storm

e. Mitigation Needs, Actions, & Strategies

communication/education		
Promo/Info	Merrill	New. PSAs - Improve communications of existing programs and systems as available including but not limited to Alert Iowa, Increasing water intake during extreme heat and/or extreme dry conditions; water conservation (drought considerations); Red Flag warning awareness; Lightning safety, Snowstorm/Heavy snow safety, Tornado safety. These activities are intended to reduce risk of life and loss/damage to property. <i>City Clerk, County EMA (no funds needed)</i> HIGH PRIORITY
tools/equipment		
development		
flow control		
Drainage projects/ Study-Assessment	Merrill	New. River flooding hits north side of town and around highway. Additional attention is needed to determine prevention options. Interested in feasibility study and implementation of related solutions. Funding is a barrier. <i>City Council, City staff (Local general budget funds, PDM, FMA)</i> HIGH PRIORITY
refuge		
Shelter	Merrill	Carry over. Interest in designating refuge locations at City Park and Campgrounds. Structural enhancements to be considered for formal designation. <i>City Council, City staff County EMA as applicable.</i> (local general budget funds, community benefit programs, local groups, fundraising). LOW PRIORITY
technology		
natural barriers/supports		
Dike improvement	Merrill	New. Dike enhancement and/or replacement with more effective protections against flood, especially for lagoon. Project may require a study to determine feasible options. Priority based on funding viability, not project need. <i>City</i>

		<i>Council, County, and DNR collaboration as applicable. (Local general budget funds) MEDIUM PRIORITY</i>
Stabilization	Merrill	New. City is using rip rap for stabilization and reduction of wash out potential. Interested in more permanent means of stabilizing river bank and protective berms. <i>Public Works, City Maintenance, DNR as may be applicable. (Local general budget funds, PDM, Flood Disaster funds, community benefits program) HIGH PRIORITY</i>

8. OYENS

a. Profile

The City of Oyens is situated near the northeastern part of Plymouth County and occupies 0.09 square miles. Highway 3 is accessible from less than a mile, just south of the city. Highway 3 and K-64 are the closest main road connectors to surrounding communities. There is a Canadian National railroad line that travels east-west through the southern part of the city.

City Governance & Community Supports

Oyens is governed by a five-person elected Council and the Mayor. Offices in addition to Mayor and Council include City Clerk, Maintenance, and Economic Development. The Volunteer Fire Department is independent of the city and staffs about 22 volunteer firefighters. Oyens contracts with the county for law enforcement and Emergency Management.

Demographics, Housing, & Economics

CensusReporter.gov estimates the population of Oyens at 89 in 2023¹⁵, showing a slight decrease from 92 residents recorded in 2020 census numbers. The town is home to 32 households, with a relatively high median household income of \$96,250, indicating a strong economic standing. Although no specific poverty data is available, the community’s income level suggests a relatively stable financial environment. However, city staff believes income and population estimates in determined from the 2020 census as well as American Community Survey estimates since to greatly misrepresent the actual population and relative income. A Community Development Block Grant (CDBG) guided income survey is currently underway to determine actual Low-to-Moderate-Income rates.

¹⁵ Source: <https://censusreporter.org/profiles/16000US1960780-oyens-ia/>

In Oyens, there are an estimated 32 total housing units, all of which are occupied, reflecting a fully utilized housing stock. None of the units are vacant or classified as mobile homes. The majority of the housing structures were built between 1990 and 2000, with a smaller portion built before 1990, and a notable number of homes were built in 2000 or later. This indicates a relatively newer housing market with stable occupancy.

Leading Employers

Oyens has a few small businesses in town. The following are notable employers.

- Central Valley Ag
- US Post Office
- CVA Storage

Critical Facilities, Community Supports, Vulnerable Populations, Gathering Locations, & Local Areas of Interest

City Hall	230 Main St
Fire Station	
Well House	401 Park St
Water Plant Shed	

Once established, the City Park will be included as a critical facility and gathering location for Oyens. It is important to note the above listed employers also serve as potential gathering locations. City Hall serves as command center and refuge location in the event of emergency. The Fire Department has a connection to a generator on county property that runs the sheds.

Valuation of City Assets

A current valuation of assets is not immediately available. However, based on valuation increases for communities throughout the region, the 2019 valuation of \$474,360 has likely increased between 20 and 50% in the last five years. Investments expected through planned

projects may have an exponential impact on cost-benefit analyses applied to mitigation projects.

b. Participation

Facilitated by SIMPCO and Plymouth County EMA Coordinator Rebecca Socknat, a planning meeting was held on February 21, 2025 at the county EMA office. The following were in attendance.

- Donna Paulsen, Mayor
- Julie Athens, City Clerk

Further input was collected via survey with three of Plymouth County’s 65 responses indicating Oyens as place of residence.

c. Community Capabilities

<i>Policies/Ordinance</i>	
Zoning Ordinance	
Nuisance Ordinance	
<i>Programs</i>	
Zoning/Land Use Restrictions	
National Flood Insurance Program (NFIP) Participant	CID # 190479A
ISO Fire Rating	Class 9/10
Staff/Department	Comments
Emergency Response Team	Yes, Fire and Rescue (no ambulance)
<i>Local Funding Availability</i>	
Apply for Community Development Block Grants	
Fund projects through Capital Improvements funding	
Authority to levy taxes for a specific purpose	
Fees for water and sewer services	
Impact fees for new development through TIF	
Ability to incur debt through:	<ul style="list-style-type: none"> • general obligation bonds • special tax bonds

Much of the city’s maintenance is contracted – lagoon, water, snow removal, utilities, and street repairs.

An income survey to determine CDBG eligibility is underway. Based on interactions with population, the city expects drastically different outcomes than those determined through 2020 decennial census estimates.

Review of Actions Taken (Since 2019)

Oyens did not have any projects included in the 2020 HMP. Projects completed were in line with routine maintenance with mitigation measures sustained or improved in the process, for example in street repairs. **The city participates in the NFIP program with the City Clerk serving as Floodplain Administrator. Oyens has zero RL/SRL properties.**

d. Risk Assessment

Contributing Factors

Floodplain carries through south of city limits and surrounds (but does not overlap) the lagoon. As Plymouth County Floodplain maps are in preliminary stages, those determinations may change – especially when the frequency and intensity of local flooding is in a cycle of annual increases. Infrastructure plans, especially regarding water system improvements, will fully consider the potential changes in the final maps with specific attention given to the 500-year floodplain.

The city is looking into establishing a city park. A committee is in place and preliminary plans include a shelter that would serve as storm refuge as well as shade in extreme heat conditions. The city is also planning water systems improvements with the schedule being highly reliant on funding opportunities. At present, city water is testing at a high level for nitrates. The project is primarily a public health measure. Wastewater improvements are incorporated in the project as are mitigation efforts that protect the infrastructure from flooding and allow for, at minimum, generator connections. Pending fund availability and final engineering, a dedicated

generator is expected to be part of the project. The shelter and generator aspects are included as projects for Oyens in this Plan. A mobile generator is available through the County as needed. However in the event of a large scale disaster, it may already be designated for an another use.

Water main capacity constrains the city’s ISO Fire Rating with local infrastructure not meeting the 6” or greater size requirement. The city does not have independent ambulance services.

In addition to community conditions as outlined above, an assessment of NOAA Storm Event database records provides the following events specific to Oyens.

<i>Location</i>	<i>Date</i>	<i>Time</i>	<i>Type</i>	<i>Mag</i>	<i>Dth</i>	<i>Inj</i>	<i>PrD</i>	<i>CrD</i>
OYENS	5/10/2023	23:40	Hail	1.75 in.	0	0	0.00K	0.00K
OYENS	5/10/2023	23:42	Hail	2.00 in.	0	0	0.00K	0.00K
OYENS	4/16/2024	13:22	Thunderstorm Wind	61 kts. EG	0	0	0.00K	0.00K

Oyens is included in the represented area indicated by Plymouth (Zone) within the NOAA system, noting general effects of regional weather conditions as noted for 102 reports. Oyens student population attend classes in the MMCRU and Le Mars school districts, highlighting importance of passable roadways in inclement weather conditions.

Priority Hazards

The following hazard priority designations are carried over from the 2020 plan as their relative impacts are still of significant concern to the community.

- Tornado/Windstorm
- Thunderstorm w/Hail & Lightning
- Grass and Wildland Fire

A lightning strike cost the community \$35,000 in damages. Infrastructure failure ranks closely to those noted with particular concern for water quality and lagoon function.

e. Mitigation Needs, Actions, & Strategies

The city needs to look at opportunities to replace the propane tank for city hall to ensure function in the event of an emergency.

communication/education		
Promo/Info	Oyens	New. PSAs - Improve communications of existing programs and systems as available including but not limited to Alert Iowa, Increasing water intake during extreme heat and/or extreme dry conditions; water conservation (drought considerations); Red Flag warning awareness; Lightning safety, Snowstorm/Heavy snow safety, Tornado safety. These activities are intended to reduce risk of life and loss/damage to property. <i>City Clerk, County EMA (no funds needed) HIGH PRIORITY</i>
tools/equipment		
Generator & Related Projects	Oyens	New. As part of an infrastructure improvement project for the city's water systems, the city is looking at opportunities to include a dedicated generator at its wastewater treatment plant. Cost is to be determined and will dictate whether a dedicated generator is added or if a transfer switch alone is incorporated into the project. If a transfer switch is the implemented solution, the city will pursue funds for a mobile generator for use between its facilities. <i>City Council, contracted engineering firm, DNR. (USDA, DNR, CDBG, Local general budget funds, PDM) HIGH PRIORITY</i>
development		
flow control		
refuge		
Shelter	Oyens	New. The city is in the process of establishing a city park. Plans include a shelter to offer moderate protection from thunderstorms, hail & lightning as well as shade in extreme heat conditions. <i>City Park Planning Committee, City Council (Local general budget funds, community betterment, PDM as applicable. HIGH PRIORITY</i>
technology		
natural barriers/supports		

9. REMSEN

a. Profile

The City of Remsen is situated in the northeast quadrant of Plymouth County, occupying 1.27 square miles. Highway 3 is the main road that connects Remsen to surrounding communities and delineates much of the town's southern border. A Canadian National railroad line travels east-west through the center of town, following much of Remsen's northern border.

City Governance & Community Supports

Remsen is governed by a five-person elected Council and the Mayor. Offices in addition to Mayor and Council include City Clerk, Street Department, Sanitation Department, Utility Board, and Wastewater Department. Remsen City has a volunteer Fire Department in place. The Department staffs twenty members, headed by one Fire Chief and three officer/personnel positions. Outside of preventing and extinguishing fires, the Fire Department also takes on the responsibility of answering all emergency calls for which there is no other established agency (<http://www.remseniowa.org/>).

City staff designates the Legion Hall as a significant support entity to community's well-being. Additional community supports are specified in the discussion of **Community Capabilities**. Remsen contracts with the county for law enforcement and Emergency Management, but has a Fire and Response team.

Demographics, Housing, & Economics

CensusReporter.gov estimates Remsen's population increased to 1,897¹⁶ in 2023, up from 1,678 in 2020, indicating steady growth. The town is home to 677 households and boasts a median household income of \$98,250, suggesting a strong economic foundation. With only 4.1% of residents living below the poverty line, Remsen appears to be a financially stable community, reflecting positive economic trends.

Remsen has a total of 727 housing units, with 676 currently occupied, indicating a high occupancy rate and a relatively low number of vacancies. The housing stock includes 51 mobile homes. A significant portion of homes were built in 2000 or later, while smaller but equal shares were constructed in the 1990s and before 1990. This suggests a community with a predominantly newer housing base and ongoing residential development.

Leading Employers

MMC & RU Community School Districts	Marcus & Remsen offices
Happy Siesta Nursing Home	423 Roosevelt Ave,

¹⁶ Source: <https://censusreporter.org/profiles/16000US1966405-remsen-ia/>

Mid-Sioux Opportunity	418 S Marion St
Farmers' Cooperative	6 S Washington
Bavarian Meadows	632 L14 # 130
Gengler Feed	002 S Marion St
Wells Enterprises	(Region employer) Le Mars, IA

Critical Facilities

City Hall	008 W 2 nd St
Police Dept	205 Fulton
Fire Dept & Municipal Garage	108-112 1 st St
Remsen Public Library	209 Fulton St, Remsen, IA 51050
Maintenance Bldg	215 Fulton St
Well/Reservoir	124 E Nothem Ave
Well Field	North of Remsen
Water Tower	801 Madison St
Remsen Swimming Pool & Related	209 Lincoln St,
Thelen Park; Football Field; North Park	
Garage	122 Marion
Sunrise Park & Shelter House	515 E 3 rd St
Beck Park & Shelter House	105 Madison St
Old Light Plant	125 E 1 st St
Ambulance Bldg	109 Fulton
Shop/Utility Bldg	320 S Marion St
Storage	16267 L12
Main Lift Station & Lab	Marion St
Remsen Cemetery	
Niggeling Ball Park & Related	Nothem Ave
Baseball Field & Related	
Water Treatment Facilities & Related	400 Lagoon Rd
Derby Arena	Marion St

Community Supports, Vulnerable Populations, Gathering Locations, & Local Areas of Interest

MMC & RU Middle School	511 Roosevelt Ave, Remsen
RU Remsen Elementary (Pk-4)	
Avalon Ballroom	114 Fulton St
Remsen Golf Course	506 W 5 th St
<i>Outside city limits</i>	
Meadow Wildlife Area	45597 140 th Street
Rufus B. Hatch Memorial Grassland	Intersection of L22 and 140 th Street
Kohler Memorial Grassland	near 150 th St and Quest Ave

Locations indicated under leading employers are also considered as gathering locations and areas of interest. Similarly, gathering locations outside city limits are included as visitors during special events may temporarily cause a significant increase in population affecting resource availability in hazardous conditions.

Valuation of City Assets

Building	\$	17,504,426	RC
Personal Property	\$	1,462,083	RC
Property in the Open	\$	<u>8,238,220</u>	<u>RC</u>
Total	\$	<u>27,204,729</u>	

b. Participation

A mitigation planning meeting was facilitated by SIMPCO at Remsen City Hall on February 25, 2025 with the following in attendance.

- Rachel Keffeler, City Administrator
- Mike Wurth, Public Works Superintendent

Additional input was provided through survey response with five of Plymouth County's respondents indicating residence in Remsen.

c. Community Capabilities

<i>Plans/Guidance Documents</i>	
Comprehensive Plan	
Builder's Plan - through Zoning Administrator	
<i>Policies/Ordinance</i>	
<ul style="list-style-type: none"> • Building Regulations Ordinance - IPMC by reference w/exceptions (2019) adopted 5/2024 • Dangerous Buildings Ordinance • Drainage Ordinance • Floodplain Ordinance • Historic Preservation Ordinance • Nuisance Ordinance • Open Burning Restrictions • Storm Water Ordinance • Subdivision Ordinance • Tree Ordinance • Well Protection • Zoning Regulations Ordinance 	
<i>Programs</i>	
Zoning/Land Use Restrictions	
National Flood Insurance Program (NFIP) Participant	CID #190480A
ISO Fire Rating	Class 5/8B
<i>Staff/Department</i>	
Building Code Official	Zoning Administrator
Public Works Official	
Emergency Response Team	Yes, Fire and Rescue
Historic Preservation	
Museum Board	
<i>Non-Governmental Organizations</i>	
Veterans Groups	American Legion Pieper
Chamber of Commerce	
Community Organizations	Lions Club
<i>Local Funding Availability</i>	
Ability to apply for Community Development Block Grants	
Ability to fund projects through Capital Improvements funding	
Authority to levy taxes for a specific purpose	
Fees for water, sewer, gas, and electric services	
Ability to incur debt through:	<ul style="list-style-type: none"> • general obligation bonds • special tax bonds • private activities

The city participates in the NFIP program with the Mayor serving as Floodplain Administrator. Remsen has zero RL/SRL properties.

Review of Actions Taken (Since 2019)

Actions taken to improve community resilience in Remsen include a water systems improvement project involving water main replacements, funded in part by CDBG. Projects completed in response to planned strategies in the 2020 plan include one amended addition as included in the following table.

communication/education		
Promo/Info	Remsen	2020: Interest in promotion of established warning systems such as Alert Iowa system; <i>City Clerk, County EMA</i> (No dedicated funding necessary) HIGH PRIORITY
Promo/Info	Remsen	Update. Remsen includes periodic postings recommending resident enrollment in Alert Iowa and similar online alert systems. Community will continue to do so but this will not be continued as an Ongoing mitigation-specific project into the 2026 plan.
tools/equipment		
development		
Bridges & Roads	Remsen (as amended at local level 8/10/2020)	Amendment: Box culvert replacement in flood prone area (5 th St between Jackson and Marion Streets). <i>City of Remsen, Beck Engineering contracted services, City Clerk, Public Works.</i> (anticipated funding: FMA/BRIC, local match via Road Use funds, and local option funds) HIGH PRIORITY Complete. Flood mitigation project was completed with addition of box culvert and redirection of runoff. Project cost was \$475,000 - paid using entirely local funds.
flow control		
refuge		
technology		
natural barriers/supports		

Other work that contributes to local resiliency includes tiling work as completed on the Golf Course improving drainage systems on Country Club and Celebrity with one storm drain on each 24" tile. Runoff flows to the pond. Project cost was \$22,000 in materials. Labor was completed by Golf Course employees.

d. Risk Assessment

Contributing Factors

An assessment of the recorded events specific to Remsen includes eight reports. This is separate from the 102 Plymouth (Zone) events reported that also affected the area.

<i>Location</i>	<i>Date</i>	<i>Time</i>	<i>Type</i>	<i>Mag</i>	<i>Dth</i>	<i>Inj</i>	<i>PrD</i>	<i>CrD</i>
REMSEN	8/18/2022	18:00	Hail	1.00 in.	0	0	0.00K	0.00K
REMSEN	4/19/2023	20:04	Hail	1.00 in.	0	0	0.00K	0.00K
REMSEN	4/16/2024	13:21	Thunderstorm Wind	61 kts. EG	0	0	0.00K	0.00K
REMSEN	4/30/2024	14:56	Hail	0.75 in.	0	0	0.00K	0.00K
REMSEN	4/30/2024	15:00	Hail	0.75 in.	0	0	0.00K	0.00K
REMSEN	4/30/2024	15:02	Hail	0.88 in.	0	0	0.00K	0.00K
REMSEN	4/30/2024	15:04	Hail	1.00 in.	0	0	0.00K	0.00K
REMSEN	5/20/2024	18:50	Hail	1.00 in.	0	0	0.00K	0.00K

Priority Hazards

- Infrastructure Failure
- Tornado / Windstorm
- Thunderstorm with Hail & Lightning

Shown above in order of greatest concern, the city includes Flooding to the list. City flood-related expense is mainly focused on washout from uncontrolled runoff during flash flood events. Survey responses indicated Severe Winter Storm as a notable concern in addition to the city's #2 & #3 considerations. When asked to select the top three hazards, respondents selected Severe Winter Storm (4/5), Tornado/Windstorm (3/5) with the highest frequency. Transportation Incident and Terrorism were also noted.

e. Mitigation Needs, Actions, & Strategies

The city is in the process of moving its utilities underground. The \$1.2M project is in progress and set for completion in 2026. Additional mitigation-specific strategies to be implemented in the next five years are included in the following project table.

communication/education		
Promo/Info	Remsen	New. PSAs - Improve communications of existing programs and systems as available including but not limited Increasing water intake during extreme heat and/or extreme dry conditions; water conservation (drought considerations); Red Flag warning awareness; Lightning safety, Snowstorm/Heavy snow safety, Tornado safety. These activities are intended to reduce risk of life and loss/damage to property. <i>City Clerk, County EMA (no funds needed) HIGH PRIORITY</i>
tools/equipment		
Equipment	Remsen	New. Fire Department is in need of equipment replacements including 12 SCBA units with harness/backpack, face piece, and 2 cylinders each and 24 spare cylinders. Cost at last estimate is about \$122K. <i>City Council, Fire Chief & Department reps (local general budget funds, AFG grant if awarded, community benefits funds). HIGH PRIORITY</i>
development		
flow control		
Drainage Projects	Remsen	New. Storm drains are needed at each end of Beck Park. <i>City Council, public Works, Parks & Rec, DNR as applicable (local general budget funds, DNR as available, PDM/Flood prevention as available) HIGH PRIORITY</i>
refuge		
technology		
natural barriers/supports		

10. STRUBLE

a. Profile

The City of Struble lies near the northern-most border of Plymouth County, and occupies .016 square miles. Highway 75 is the closest man road that connects Struble to surrounding communities. Less than a mile east of the city, Highway 75 travels north and south. West Branch Floyd River also runs north/south, less than half a mile east of the city.

City Governance & Community Supports

The City of Struble is governed by an elected Council and Mayor, and appointed City Clerk. **City Council meets the first Tuesday of every month at 7:00 PM.** Struble contracts with the county

for law enforcement. The city does not have a Fire-Rescue department, but contracts with the City of Maurice (Sioux County) Fire and Rescue.

Demographics, Housing, & Economics

Struble had a population of 71 in 2023¹⁷, reflecting a small increase from 67 residents in 2020. The town consists of 30 households and has a median household income of \$59,167. Despite the modest population growth and moderate income level, about 21.4% of residents live below the poverty line, indicating that a portion of the community may be experiencing economic hardship.

Struble has a total of 30 housing units, all of which are occupied, indicating full utilization of its housing stock. The community includes a small number of mobile homes. A majority of the homes were built prior to 2000, with the most recent structure added in 2005. CensusReporter¹⁸ indicates about 35% of residents moved into their current home between 2010 and 2020.

Leading Employers

While hosting relatively small employee populations, Struble recognizes Urban’s Lawn Care as its leading employers.

Critical Facilities, Community Supports, Vulnerable Populations, Gathering Locations, & Local Areas of Interest

City Hall	210 William St
City Maintenance Shop	305 Main St
Town Hall	Block 7 Elgin Twp
City Park	(adjacent to City Hall)
Shelter House	Lot 11-13 Block 12

¹⁷ censusreporter.org/profiles/16000US1975945-struble-ia/

¹⁸ <https://censusreporter.org/profiles/16000US1975945-struble-ia/> (2026 04-07)

Valuation of City Assets

Valuation of assets as provided is based on the city’s current insurance policy and does not necessarily provide full scope of public properties and equipment. This serves as a foundation for cost-benefit considerations when determining project scope and relative impacts. Further analysis including all properties/assets within the area of potential effect of a given project will accompany an application for mitigation funds or may be included as a deliverable in a scoping project or study.

Building	\$	349,350
Personal Property	\$	<u>30,108</u>
Total	\$	<u>379,458</u>

b. Participation

Facilitated by SIMPCO, a mitigation planning meeting was held at Struble City Hall on December 3, 2024 with the following in attendance.

- Marilyn Volmecke, City Clerk
- Mike Vander Molen, Mayor
- Linda Urban, Treasurer
- Bob Hughes, Councilmember
- Troy Hughes, Councilmember
- Shelbee Ropte, Councilmember
- Ken Urban, Councilmember
- Rick Weiler, Councilmember

In addition to the planning meeting, 9 of Plymouth County’s survey respondents indicated residence as Struble.

A final review of Plan content including updates since Struble’s last input meeting was completed by the City Clerk on April 7, 2026. Upon review, the city has confirmed their commitment to adopt the Plan as approved by FEMA.

c. Community Capabilities

A small community, Struble has limited local resources. However, there is a mutual aid agreement in place with all communities in Plymouth County response, with the Sheriff's

department for law enforcement services, and with SCFR HazMat Response through the county as applicable. A border community, Struble also collaborates with nearby communities in Sioux County. Fire and rescue services are contracted with Maurice. Struble may also benefit from all supports as provided through county and regional programs as listed in their respective profiles. The following funding resources are available options for the City of Struble.

NFIP participation has been determined to be cost-ineffective. As its floodplain does not include qualifiable and/or insurable structures, Struble is a non-participant in NFIP under CID # 190481A. **The city has zero RL/SRL properties.**

<i>Local Funding Availability</i>	
Ability to apply for Community Development Block Grants	
Ability to fund projects through Capital Improvements funding	
Authority to levy taxes for a specific purpose	
Ability to incur debt through:	<ul style="list-style-type: none"> • general obligation bonds • special tax bonds • private activities

Review of Actions Taken (Since 2019)

communication/education		
Promo/Info	Struble	2020: Interest in promotion of established warning systems such as Alert Iowa system; Promote programs as available through regional resources. <i>City Clerk, County EMA (No dedicated funding necessary) HIGH PRIORITY</i>
Promo/Info	Struble	Update. informal promotion of available alert systems is provided through council discussion and interactions with residents. The city plans to continue promotion efforts to expand effectiveness of existing resources.
Promo/Info	Struble	Implemented and Ongoing. Promote established warning systems such as Alert Iowa system; Promote programs as available through regional resources. <i>City Clerk, County EMA (No dedicated funding necessary) HIGH PRIORITY</i>
tools/equipment		
development		
flow control		
technology		
natural barriers/supports		

The city completed other work as needed in recent years in terms of response as well as mitigation. Tree removal is completed to reduce potential effects of dead/diseased trees. The city is moving forward with tree replacement in the park and other public properties outside of parking. Scheduled ditch clearing was completed is on a monitoring schedule to prevent blockages that may escalate flash flooding instances. Funds as allocated from the 2019 floods were used to re-gravel heavily damaged roads. City Hall has a new roof that serves to help sustain that structure. **The city has put in new culverts along Lake Ave/4th Street and a large new culvert on the north side of Main Street downtown. They are in the process of addressing risk assessment issues, especially in the park safeguarding playground equipment**

d. Risk Assessment

Contributing Factors

Steps taken to improve resilience have been modest due to lack of available funds. However, projects as implemented have all taken mitigation into account, maximizing return on investment. At present, access to/from Struble is severely restricted with bridges out at each the north and south ends of town. Without a local fire department, the city is fully reliant on mutual aid agreements for emergency response. Concerns for fire response, especially with recently prevalent drought conditions, serve as impetus for including acquisition of a tanker in their mitigation strategies. As residents serve on nearby volunteer departments, training to operate the tanker can be part of routine certifications.

A more complicated risk is that of hazardous materials incidents as BNSF railroad line runs through town. Depending on materials in transport and other factors involved in the incident, immediate action is critical.

Flooding remains a priority concern due to a high water table. A moderate or heavy rain will routinely result in some basement flooding.

A review of NOAA Storm Event database shows 3 recorded events between 11/1/2019 and 12/31/2024, all of which occurred in 2024.

<i>Location</i>	<i>Date</i>	<i>Time</i>	<i>Type</i>	<i>Mag</i>	<i>Dth</i>	<i>Inj</i>	<i>PrD</i>	<i>CrD</i>
<u>STRUBLE</u>	4/16/2024	13:00	Tornado	EF1	0	0	0.00K	0.00K
<u>STRUBLE</u>	6/22/2024	2:00	Flood		0	0	0.00K	0.00K
<u>STRUBLE</u>	6/22/2024	14:00	Flood		0	0	0.00K	0.00K

Priority Hazards

Priority hazards are based on frequency/likelihood of occurrence, potential for catastrophic loss or damage, and ability (or lack thereof) to mitigate without outside supports.

- Flood
- Tornado/Windstorm
- Grass and Wildland Fire

Other natural disasters and other hazards on the city’s radar are drought and infrastructure failure – one increases risk of priority concerns, the other prohibits prompt response.

e. Mitigation Needs, Actions, & Strategies

Following are Struble’s identified strategies to improve their mitigative opportunities and resilience.

communication/education		
Promo/Info	Struble	Ongoing. Promote established warning systems such as Alert Iowa system; Promote awareness/preparedness programs as available through regional resources. <i>City Clerk, County EMA</i> (No dedicated funding necessary) HIGH PRIORITY
Warning Siren	Struble	New. Replace warning siren pending fundability. Current siren had aged out with replacement parts hard to find and very expensive. <i>City council, County EMA.</i> Local general budget funds, pre-disaster/mitigation funds as may be available, community foundation grants, community betterment grants) HIGH PRIORITY
tools/equipment		
Equipment	Struble	New. City identified need to obtain tanker to keep in town to support local response efforts. Without a local fire department, Struble’s risk is significantly high. Priority level reflects likelihood of extended time frame for completion due to limited funding availability. <i>City Council, County and State EMA and other response network supports as available</i> (Local general budget funds, fundraising, response equipment grants, community foundation/betterment funds) MEDIUM PRIORITY
development		

flow control		
Drainage	Struble	New. City is in need of improved stormwater drainage and runoff controls for downtown. <i>City Council</i> (City general budget funds, transportation funds, Community Benefit funds) LOW PRIORITY
refuge		
technology		
natural barriers/supports		

11. WESTFIELD

a. Profile

Westfield is the western-most incorporated city along the border of Plymouth County and occupies about 0.13 square miles. It is located on the northern edge of the "Loess Hills" landform leading to designation of the local portion of Highway 12 as the Loess Hills Scenic Byway. IA-12 is the main road that connects Westfield to surrounding communities and runs north-south through the City. County Road C38, just south of town, connects Westfield to Le Mars. The Big Sioux River runs north-south less than a mile west of the city, and the Dakota and Iowa Railroad (DAIR #211) passes north-south through the center of the city.

City Governance & Community Supports

Westfield is governed by a five-person elected Council and the Mayor. Offices in addition to Mayor and Council include City Clerk, Maintenance, and contracted water/wastewater supervisor. **Council meets the third Monday of each month.**

Ambulance services are contracted with the City of Akron. Akron Fire/Ambulance provides pre-hospital patient care and ambulance service. A 28E Agreement is in place between all Plymouth County Communities and the Plymouth County EMA for Emergency Management. **Westfield further coordinates response efforts and safety messaging with the city of Jefferson, SD (see adjacent screenshot. Source: Facebook post, March 28, 2026).**

Demographics, Housing, & Economics

In 2023, CensusReporter.org estimates Westfield's population at 133¹⁹, showing a modest increase from 123 residents in 2020. The town is home to 70 households and has a median household income of \$60,000, indicating a relatively stable economic base. With only 4.5% of residents living below the poverty line, Westfield appears to maintain a solid level of financial well-being within the community.

Westfield has a total of 84 housing units, with 70 currently occupied and 14 standing vacant. The town includes **three** mobile homes as part of its housing stock. Most of the residential structures were built in 2000 or later, reflecting a relatively modern housing landscape. A smaller number of homes were constructed in the 1990s and before 1990, indicating that much of the community's housing is fairly new.

¹⁹ Source: <https://censusreporter.org/profiles/16000US1984090-westfield-ia/>



Leading Employers

- The Station
- Hummer’s Roadhouse
- Steve McMahon Trucking
- Price Auction House
- Marilyn’s Beauty Shop

Critical Facilities, Community Supports, Vulnerable Populations, Gathering Locations, & Local Areas of Interest

City Hall	223 Union St.
Westfield Baseball Field & Related	Plymouth St & Lindon St.
Westfield City Park, Shelter, & Playground	Union & Elm St.
Loess Hills Welcome Center	320 Union
(New) City Shed/Garage	Elm
Lift Station & Lagoon	(South end) Railroad Dr
(New) Water Treatment Plant	Elm St
Community Center	215 Linden St
<i>Community Gathering Locations/Vulnerable Populations</i>	
Westfield Congregational Church	224 Linden St
<i>Outside City Limits</i>	
Birkley's Bend	26779 Highway 12
E.C. Lippke Wetland	11132 240th Street
Five Ridge Prairie	15561 260th St
Millsite River Access	10001 Highway 3

Valuation of City Assets

Total Building	\$	811,014
Total Personal Property	\$	163,334
Total Property in the Open	\$	<u>213,980</u>
Combined Total	\$	<u>1,188,328</u>

b. Participation

Facilitated by SIMPCO, a virtual mitigation planning meeting was held via Teams on February 17, 2025 with the following in attendance.

- Jenny Hartman-Mendoza, Mayor
- Karen Wardrip, City Clerk

A review meeting via phone call was conducted on August 5, 2025 with Karen Wardrip, City Clerk. A VPA was signed and filed on the same date. **A final review was completed by the City Clerk and Councilmember Beth Terpstra on February 27, 2026. Upon said review, the city acknowledges plan content and commits to adopting the plan once approved by FEMA.**

c. Community Capabilities

<i>Plans/Guidance Documents</i>	
Comprehensive Plan	
Land Use Plan	Future Land Use w/in Comp Plan
<i>Policies/Ordinance</i>	
Permitting process governed by Ordinance	
<i>Programs</i>	
National Flood Insurance Program (NFIP) Participant	CID #190482A
<i>Staff/Department</i>	
Public Works Official	
<i>Local Funding Availability</i>	
Apply for Community Development Block Grants	
Fund projects through Capital Improvements funding	
Levy taxes for a specific purpose	
Fees for water, sewer, and electric services	
Ability to incur debt through	<ul style="list-style-type: none"> • general obligation bonds • special tax bonds • private activities

The city's floodplain ordinance is located under Section 160 of their Municipal Code of Ordinances and was adopted 10/17/2022. The city participates in the NFIP program with the City

Clerk serving as Floodplain Administrator. Some properties have been removed from eligible for coverage status with recent map updates. Westfield has zero RL/SRL properties.

In addition to policy and procedural supports, the city has some equipment in place to reduce the potential effects of natural disasters and other hazards. One generator is in place at the lift station, and one is at the community center for emergency use. Additional generators are needed. Response teams are not centered in Westfield so basic preliminary on-site actions may serve to stabilize situations (power outages, command center establishment, refuge location, etc.). City staff uses the City’s UTV to access lagoon when roads are washed out.

The city has undertaken a zoning and land use update to better accommodate practical land use with some changes between commercial and residential designated lots where applicable. The city also transitioned some parcels from Ag to Commercial.

Review of Actions Taken (Since 2019)

Westfield included one mitigation strategy in the 2020 plan as shown in the following update table.

communication/education		
tools/equipment		
development		
flow control		
Flood protection	Westfield	2020: City assessing options to reinforce lagoon to protect from flooding. <i>City Council, City maintenance/waterworks, County EMA and DNR as applicable.</i> (Local funds, PDM, approved bond/loan programs as applicable)
Flood protection	Westfield	Update. This project did not advance to a more permanent solution due to expenses attributed to 2019 flood recovery and again in 2024. Substantial berm repairs were completed. However, they proved insufficient for unprecedented flooding as occurred in 2024. Lack of funding and available resources contributed to delay in permanent solution. Project is still needed and will carry over to the 2026 HMP.
refuge		
technology		
natural barriers/supports		

Other projects completed that improve local resilience include the following.

- City projects (totaling \$120,000):
 - Road to lagoon repaired, improving access in inclement weather conditions
 - Fencing **replaced**
 - Scheduled berm repair completed (though additional work is noted in current mitigation strategies section)
 - Removal of dead/diseased trees in city right of way is in progress, completed as needed. The County is addressing ditch trees.

- Impactful private property work:
 - Private dike that had collapsed was repaired (\$35,000)

At the time of the planning meeting, a Water Treatment Plant project was in progress. Westfield has added two buildings to its inventory and added a concessions stand to the city ballfields.

d. Risk Assessment

Contributing Factors

An assessment of records in the NOAA Storm Event database includes seven reports specific to Westfield in addition to the 102 attributed to Plymouth (Zone) as likely experienced throughout the county.

<i>Location</i>	<i>Date</i>	<i>Time</i>	<i>Type</i>	<i>Mag</i>	<i>Dth</i>	<i>Inj</i>	<i>PrD</i>	<i>CrD</i>
WESTFIELD	3/30/2020	7:00	Flood		0	0	0.00K	3.00K
WESTFIELD	4/1/2020	0:00	Flood		0	0	0.00K	0.00K
WESTFIELD	6/21/2020	5:34	Thunderstorm Wind	56 kts. EG	0	0	1.00K	0.00K
WESTFIELD	8/14/2020	13:54	Hail	1.00 in.	0	0	0.00K	0.00K
WESTFIELD	4/12/2023	0:00	Flood		0	0	0.00K	0.00K
WESTFIELD	6/21/2024	16:00	Flood		0	0	0.00K	0.00K
WESTFIELD	7/1/2024	0:00	Flood		0	0	0.00K	0.00K

Additional consideration is given to the six mobile homes located in city limits.

Priority Hazards

The City carried over the following as priority hazards.

- Flood
- Thunderstorm w/Hail & Lightning
- Tornado/Windstorm

e. Mitigation Needs, Actions, & Strategies

communication/education		
Promo/Info	Westfield	New. PSAs - Improve communications of existing programs and systems as available including but not limited to Alert Iowa, Increasing water intake during extreme heat and/or extreme dry conditions; water conservation (drought considerations); Red Flag warning awareness; Lightning safety, Snowstorm/Heavy snow safety, Tornado safety. These activities are intended to reduce risk of life and loss/damage to property. <i>City Clerk, County EMA</i> (no funds needed) HIGH PRIORITY
Warning Siren	Westfield	New. Replace warning siren pending fundability. Current siren had aged out with replacement parts hard to find and very expensive. <i>City council, County EMA.</i> Local general budget funds, pre-disaster/mitigation funds as may be available, community foundation grants, community betterment grants) HIGH PRIORITY
tools/equipment		
development		
Improve existing facilities & infrastructure	Westfield	New. City is in process of completing a new water treatment facility. Project is incorporating flood protections and continuity of operations features (generator/generator hook up). <i>Public Works, contracted project manager/administrator</i> (CDBG, Local general budget funds) HIGH PRIORITY
flow control		
Flood protection	Westfield	Carry over. City seeking options to substantially reinforce berm and/or other flood protections around lagoon. <i>City Council, City maintenance/waterworks, County EMA, FEMA, and DNR as applicable.</i> (Local general budget funds, Disaster Recovery funds as applicable) HIGH PRIORITY
refuge		
technology		
natural barriers/supports		