

## Local Contact Information

Emergency.....	911
Police Non-Emergency Number.....	712-279-6960
UnityPoint Health.....	712-279-3500
Mercy Medical Center.....	712-279-2010
Sioux City, IA Parks & Recreation Dept.....	712-279-6126
www.sioux-city.org	
Sergeant Bluff, IA City Hall.....	712-943-4244
www.cityofsergeantbluff.com	
South Sioux City, NE Parks & Rec. Dept.....	402-494-7540
www.southsiouxcity.org	
Adams Homestead and Nature Preserve.....	605-232-0873
North Sioux City, SD.....	605-232-4276
www.northsiouxcity-sd.gov	
Dakota Dunes, SD CID.....	605-232-4211
www.dakotadunes.com	
City of Dakota City, NE City Hall.....	402-987-3448
www.dakotacity.net	
Albrecht Cycle Shop.....	712-258-6050
Scheels Sporting Goods, Southern Hills Mall.....	712-252-1551
Animal Control.....	712-279-6170
Siouxland Chamber of Commerce.....	712-255-7903
www.siouxlandchamber.com	
Sioux City Convention Center /	
Tyson Events Center.....	712-279-4800
www.visitsiouxcity.org	
South Sioux City Convention &	
Visitors Bureau.....	402-494-1307
www.visitsouthsiouxcity.com	

## Trail User Groups

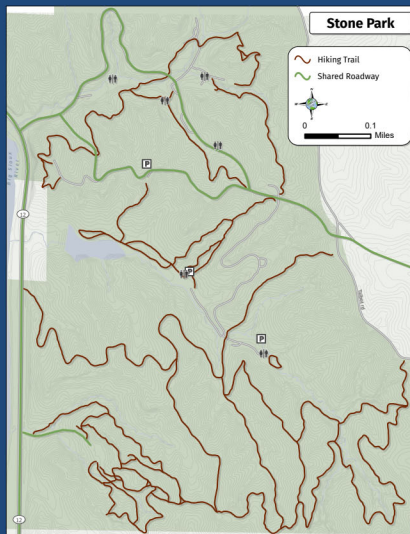
Siouxland Cyclists.....	siouxlandcyclists.org
Missouri River	
Runners Club.....	missouririverrunners.com
Siouxland Trails Foundation.....	712-212-5170

This map was created by SIMPCO, the Siouxland Interstate Metropolitan Planning Council. SIMPCO is a council of governments serving local governments, special districts, school districts, and non-profit organizations in the tri-state area.

# simpco

Thanks to the members of the SIMPCO Metropolitan Planning Organization's Bike-Pedestrian Roundtable for their dedication to the active transportation and recreation in the Siouxland area:

Albrecht Cycle	Sergeant Bluff Parks & Rec
City of Sergeant Bluff	South Dakota DOT
City of Sioux City	Sioux City Transit System
City of South Sioux City	Siouxland Chamber of Commerce
Dakota Dunes	Siouxland Cyclists
Downtown Partners	Siouxland District Health Department
Iowa DOT	Siouxland Trails Foundation
Iowa Safe Routes to Schools	Sioux City Parks & Rec
Nebraska DOT	South Dakota DOT
City of North Sioux City	
South Dakota DOT	



## Local Attractions



**War Eagle Monument**  
Views of the tri-state area, picnic sites, hiking areas, and restrooms are available.



**Woodbury County Courthouse**  
A National Historic Landmark providing an example of Prairie School architecture. 712-279-6525



**Tyson Events Center/Gateway Arena**  
concerts, ice shows, sporting events, the circus, and more. 712-279-4850 or 800-593-2228.



**Sergeant Floyd River Museum & Welcome Center**  
This dry-docked riverboat displays rare photos and river-related artifacts. 712-279-0198



**Anderson Dance Pavilion**  
The Pavilion in Riverside Park has a covered dance floor and raised band area. Numerous summer events take place here.



**Historic Pearl District**  
encompasses about 10 city blocks on the west side of Downtown Sioux City. Here you will find an electric mix of businesses and unique historic architecture.



**Trinity Heights/Queen of Peace**  
Catholic sculpture park & memorial gardens. Towering statues of the Sacred Heart of Jesus and the Immaculate Heart of Mary Queen of Peace, and an outdoor cathedral.



**Adams Homestead and Nature Preserve**  
1,500 acre state park. Approx. 13 miles of recreational trails. Open year-round for hiking, biking and cross-country skiing.



**Cone Park**  
Tubing hill, ice skating rink (winter), splash pad, mountain biking (summer), and day lodge. Connections to two-mile trail loop and Sertoma Park.



**Sioux City Public Museum**  
Exhibits include Sioux City history, Native American artifacts, and natural history. 712-279-6174



**Sioux City Art Center**  
Three-story art museum with art instruction and tours available. Admission is free. 712-279-6272



**Long Lines Family Rec Center**  
A center of community events, including sporting and special events. 712-279-6126.



**Lewis & Clark Interpretive Center**  
Interactive exhibits trace the expedition's path through what is now Sioux City. 712-224-5242



**Flight 232 Memorial**  
This memorial commemorates the heroic rescue efforts of Sioux City residents after the crash of United Flight 232 in 1989.



**Historic Fourth Street**  
Listed on the National Register of Historic Places, the area features early 20th century architecture, specialty shops, pubs, and restaurants.



**Sergeant Floyd Monument**  
National Registered Landmark dedicated to Sgt. Charles Floyd, a member of the Lewis and Clark Expedition.



**Crystal Cove Park**  
60-acre park with lake, 1.5 miles of paved trails, nature trails, fishing, and shelter for rent.



**Sioux City Railroad Museum**  
Restored locomotives, interactive exhibits, and over 5,000 artifacts that outline the region's rich railroad history.



# SIoux CITY METRO TRAIL MAP

Sioux City, IA  
Sergeant Bluff, IA  
Dakota Dunes, SD  
North Sioux City, SD  
South Sioux City, NE  
Dakota City, NE

## Etiquette for Safe Trail Use

### All Trail Users

- Show courtesy to others
- Use the right side of the trail except when otherwise designated
- Obey all traffic signs and move to the side when looking at a scenic view
  - Always pass on the left
- Follow all trail rules and hours
- Respect the rights of property owners
- Keep pets on a leash and remove pet feces from trail
- Travel with a buddy in case of an emergency

### Bicyclists

- Always wear a helmet
- Ride in the right-hand lane, except when passing, preparing for a left-hand turn, or avoiding hazards
  - Always ride with the flow of traffic
  - Obey traffic signs and signals
- Use hand signals to advise motorists you plan to turn, change lanes, or stop
- Make eye contact with motorists- never assume a motorist sees you or that you have the right of way
- Expect the unexpected - such as parked vehicles pulling into traffic, vehicle doors opening into your path, and debris on the road

### Pedestrians and Skaters

- Use the right side of the trail, except when otherwise designated
- Watch out for other trail users
- Listen for audible signals and allow faster trail users to pass safely

