

# MEMBERSHIP

## Welcome Packet



[www.simpco.org](http://www.simpco.org)



[simpco@simpco.org](mailto:simpco@simpco.org)



6401 Gordon Drive  
Sioux City, IA 51106

Thank you for being a valued SIMPCO member. Your support is vital to our mission of driving growth and positive change in the Siouxland region. With your help, we continue to advance key initiatives in economic development, transportation, housing, infrastructure, and quality of life.

## ABOUT SIMPCO

### YOUR COMMUNITY'S PARTNER

The Siouxland Interstate Metropolitan Planning Council (SIMPCO) is a council of governments serving over 75 member entities across Iowa, Nebraska, and South Dakota. SIMPCO fosters collaboration among cities, counties, school districts, and non-profits to address shared regional challenges through coordinated planning in areas like transportation, housing, economic development, and environmental sustainability. By promoting cooperation across jurisdictions, SIMPCO helps strengthen communities and improve quality of life throughout the Tri-State area.

UNITING COMMUNITIES ACROSS  
IOWA, NEBRASKA, AND SOUTH  
DAKOTA



## VISION

---

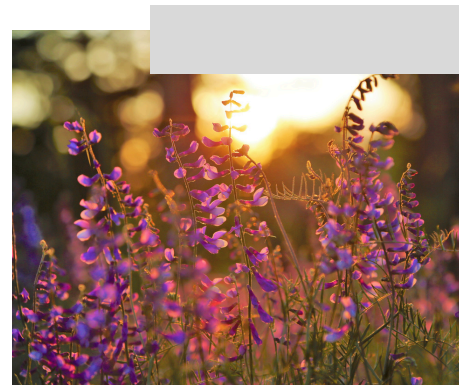
Our Vision is to be a trusted and valuable partner to local officials in addressing community challenges and finding effective solutions. We strive to serve as a unifying force among local governments, fostering collaboration on regional issues. Through our commitment to excellence, we aim to be the model standard for regional planning organizations and councils of governments.

---

## MISSION

---

- 01 To be a catalyst for regional cooperation, uniting local governments of the tri-state Siouxland region into an effective council of governments.
- 02 To promote the best possible planning practices and advocate partnerships throughout the region.
- 03 To partner with local governments in long-range planning, community development activities, and professional regional program management, which foster intelligent growth, economic development, and safe, accessible transportation.



# FUNDING SOURCES

## MEMBERSHIP DUES | FEDERAL & STATE FUNDING

SIMPCO secures and manages project-specific state and federal grants to support regional priorities like economic development, transportation, sustainability, housing, and public safety. Member communities pay annual per capita dues, which help match and leverage additional funding.

## ADMINISTRATION FEES

SIMPCO administers a number of federal and state programs on behalf of member communities and agencies. These programs help member communities develop plans and implement strategies that will most effectively meet their needs.

## DIRECT PLANNING SERVICES

SIMPCO's staff offers direct planning services to member communities, such as grant-writing, project administration, special project development, and coordination. They can provide on-site assistance within the community. Cities and Counties have the option to request a professional staff member for a specific number of hours or days per week at an agreed-upon fee.

**WWW.SIMPCO.ORG**





## SERVICES & SERVICE AREA

### TRANSPORTATION PLANNING

The Transportation Planning Division oversees the MPO and RPA, focusing on long-range planning, transportation improvements, and transit development. It uses tools like GIS, travel demand forecasting, and ITS to support data-driven decisions, while also promoting active transportation and accessible transit services across the region.

### COMMUNITY DEVELOPMENT

Community Development (CD) provides comprehensive project development and technical assistance, including strategic planning, grant writing, housing assessments, natural resource and hazard planning, water research, land use and zoning, codification, accessibility training, budgeting support, and coordination of special projects.



#### IOWA

- CHEROKEE
- IDA
- MONONA
- PLYMOUTH
- WOODBURY

#### NEBRASKA

- DAKOTA

#### SOUTH DAKOTA

- UNION

## DIVISIONS

At SIMPCO, each division plays a vital role in delivering diverse services and advancing our mission to serve the region.



### COMMUNITY DEVELOPMENT

SIMPCO's Community Development (CD) Division supports member communities with planning, grant writing, research, and technical assistance through partnerships that promote smart growth and address regional needs.

### ECONOMIC DEVELOPMENT

SIMPCO's Economic Development (ED) Division supports member communities with downtown revitalization, economic planning, technical assistance, and collaboration with business groups to promote sustainable regional growth.

### GIS MAPPING

SIMPCO offers custom GIS mapping service, both static and interactive—for zoning, transportation, demographics, utilities, and more. Our team also leads regional GIS collaborations to support member needs.

## TRANSPORTATION PLANNING

SIMPCO's Transportation Division oversees regional transportation planning through the Metropolitan Planning Organization (MPO) and the Siouxland Regional Transportation Planning Association (SRTPA). The SRTPA serves Cherokee, Ida, Monona, Plymouth, and Woodbury counties in Iowa, while the MPO covers the Sioux City metro area across parts of Iowa, Nebraska, and South Dakota.

Supported by FHWA, FTA, and local partners, both entities lead key planning initiatives, including:

- **Transportation Planning Work Program (TPWP):** Annual planning activities
- **Public Participation Plan (PPP):** Community engagement process
- **Long Range Transportation Plan (LRTP):** Vision and strategy for future transportation
- **Transportation Improvement Program (TIP):** Four-year project funding plan
- **Passenger Transportation Plan (PTP):** Coordination of regional transit services

PARTNERING FOR PROGRESS  
ACROSS EVERY DIVISION



HOUSING

SIMPCO’s Housing Division supports affordable housing in Cherokee, Ida, Monona, Plymouth, and Woodbury counties (excluding Sioux City). In partnership with WICIRHTF, we offer year-round Owner-Occupied Housing Repair/Rehab Programs for eligible home repairs. Applications are reviewed on a first-ready, first-served basis, with waitlists if funding is limited.

HOUSING 2025 INCOME GUIDELINES

*All SIMPCO and WICIRHTF housing programs are limited to individuals and families who are at or below 80% of the median family income limits. HUD determines this limit each year. To qualify your household income must be below the limits in the chart.*

HOUSHOLD SIZE	1 PERSON	2 PEOPLE	3 PEOPLE	4 PEOPLE
CHEROKEE	\$55,000	\$62,850	\$70,700	\$78,550
IDA	\$51,550	\$58,900	\$66,250	\$73,600
MONONA	\$51,550	\$58,900	\$66,250	\$73,600
PLYMOUTH	\$56,950	\$65,100	\$73,250	\$81,350
WOODBURY	\$51,550	\$58,900	\$66,250	\$73,600



## TRANSIT

### STOUXLAND REGIONAL TRANSIT SYSTEM (SRTS)

The Siouxland Regional Transit System (SRTS) offers accessible, door-to-door public transportation for all ages, including those with specialized needs. Riders benefit from clean, ADA-compliant buses with seat belts, child car seats, and lift access for mobility devices.

SRTS serves medical appointments, work, school, shopping, and more—including critical trips like dialysis or therapy. Businesses can also contract rides for employee commutes.

Service is demand-response with 24-hour notice and operates in parts of Iowa, Nebraska, and South Dakota.

#### To schedule a ride, call:

Local: (712) 279-6919

Toll-Free: 800-881-2076

TDD/TTY Users: Call RELAY Iowa at 800-735-2942

**Scheduling hours:** Monday–Friday, 6:30 a.m. to 6:00 p.m.



---

# BOARDS & COMMITTEES

---

## SIMPCO EXECUTIVE-FINANCE COMMITTEE

The Executive/Finance committee serves as the recommending board to the Council of Officials and Board of Directors in matters relating to finance, budgets, contracts, personnel, benefits, project management and as the nominating committee for the Council of Officials and Board of Directors elections. Meetings are held at 7:30 a.m. on the 1st Wednesday of each month.

Jon Winkel, Chairman - Mayor, Sergeant Bluff  
Dan Moore, Vice Chairman - Council Member, Sioux City  
Lance Hedquist, Treasurer - City Admin, South Sioux City  
Kelly Kreber, Secretary - Mayor, City of Hinton  
Mike Collet - Interim City Manager, Sioux City  
Aaron Lincoln - City Admin, Sergeant Bluff  
Dan Bousquet - Council Member, South Sioux City  
Dave Dietrich - Supervisor, Woodbury Co.  
Mark Monson - Board Member, Sergeant Bluff P&Z  
Julie Burhoop - Commissioner, North Sioux City

## SIMPCO BOARD OF DIRECTORS

The Board of Directors is SIMPCO's governing body, responsible for setting policy, approving projects and budgets, overseeing grants, and fostering intergovernmental cooperation. It appoints the Executive Director, manages contracts and insurance, and assigns members to committees. The board meets six times a year, typically on the second Thursday of January, March, May, August, October, and December.

Each paying dues member has a seat on the Board of Directors.

---

## **WESTERN IOWA COMMUNITY IMPROVEMENT REGIONAL HOUSING TRUST FUND (WICIRHTF) BOARD OF DIRECTORS**

The WICIRHTF Board of Directors oversees housing improvements in Cherokee, Ida, Monona, Plymouth, and Woodbury counties. The Board includes equal representation from local government and the private sector. Meetings are typically held on the fourth Thursday of January, March, May, July, September, and November.

Vince Phillips, Chair - Supervisor, Monona Co.  
Devlun Whiteing, Vice Chair - Supervisor, Ida Co.  
Dave Dietrich - Supervisor, Woodbury Co.  
Dough Manley - Supervisor, Plymouth Co.  
Shane Bellefy - Supervisor, Cherokee Co.  
Robert Meyer - Loan Officer, Bank First, Onawa  
Bill Anderson - Director, Cherokee Area Economic Development Corporation  
Scott Brekke - Lender, Great Southern Bank, Sioux City  
Jason Rasmus - Market President, Availa Bank, Sioux City  
Rita Frahm - President, Ida County Economic Development  
Melissa Beermann - Director, Onawa Economic Development/ Parks & Rec.

## **METROPOLITAN PLANNING ORGANIZATION (MPO) TTC**

The Transportation Technical Committee (TTC) advises the MPO Policy Board, with staff from MPO jurisdictions and SIMPCO. They conduct research, develop tools, and guide regional transportation planning in the Sioux City metro. Meetings are held the Wednesday before the first Thursday of January, March, May, July, September, and November.

Aaron Lincoln, Chair - City Admin, Sergeant Bluff	Gordon Phair - Engineer, Sioux City
Tom Rohe, Vice Chair - Engineer, Plymouth Co.	Jason Allen - Operations Supervisor, Sioux City Transit
Jill Wanderscheid - Neighborhood Service Manager, Sioux City	Bob Kratky - City Admin, Dakota City
Laura Sievers - Engineer, Woodbury Co.	Jerry Buum - Hwy Superintendent, Union Co.
Mike Collett - City Manager, Sioux City Airport	Andrew Tramp - District Manager, Dakota Dunes CID
Jeff Dooley - City Admin, City of North Sioux City	
Jolene Gubbels - Hwy Superintendent, Dakota Co.	
Lance Hedquist - City Admin, South Sioux City	

---

## **METROPOLITAN PLANNING ORGANIZATION (MPO) POLICY BOARD**

The MPO Policy Board, consisting of elected officials, state DOT representatives, and transit operators, sets transportation goals and priorities for the Sioux City metro area. Meetings are held on the first Thursday of January, March, May, July, September, and November.

Ken Beaulieu, Chair - Supervisor, Dakota Dunes CID  
Craig Anderson, Vice Chair - Supervisor, Plymouth Co.  
Dave Dietrich - Supervisor, Woodbury Co.  
Dan Moore - Council Member, Sioux City  
Ron Hanson - Council Member, Sergeant Bluff  
Mike Tokarczyk - Advisory Board Member, Sioux City Transit  
Brian Van Berkum - Commissioner, Dakota Co.  
Randy Groetken - Council Member, Dakota City  
Mike Dailey - Commissioner, Union Co.  
Chris Bogenrief - Commissioner, North Sioux City  
Julie Schoenherr - Council Member, Sioux City  
Randy Meyer - Council Member, South Sioux City

## **SIOUXLAND REGIONAL TRANSPORTATION PLANNING ASSOCIATION (SRTPA) TECHNICAL ADVISORY COMMITTEE (TAC)**

The SRTPA Technical Advisory Committee (TAC) includes planning, engineering, and public administration staff from Cherokee, Ida, Monona, Plymouth, and Woodbury counties. Working with SIMPCO staff, the TAC provides research, technical tools, and guidance to the SRTPA Policy Board on rural transportation planning. Meetings are typically held on the second or third Wednesday of January, March, May, June, September, and November.

Jeff Williams, Chair - Engineer, Ida Co.	Jason Vacura - City Admin, Le Mars
Tom Rohe, Vice Chair - Engineer, Plymouth Co.	Brian Pearson - Transit Director, SRTS
Charlie Bechtold - Engineer, Monona Co.	Kelly Puhrmann - Engineer, Cherokee Co.
Kyle Basten - Engineer, City of Cherokee	
Laura Sievers - Engineer, Woodbury Co.	

---

## **STOUXLAND REGIONAL TRANSPORTATION PLANNING ASSOCIATION (SRTPA) POLICY BOARD**

The SRTPA Policy Board oversees rural transportation planning in five counties, setting regional goals with input from elected officials, DOT representatives, and transit operators. Meetings are held on the fourth Thursday of January, March, May, September, and November.

Vince Phillips, Chair - Supervisor, Monona Co.  
Devlun Whiteing, Vice Chair - Supervisor, Ida Co.  
Dave Dietrich - Supervisor, Woodbury Co.  
Doug Manley - Supervisor, Plymouth Co.

Shane Bellefy - Supervisor, Cherokee Co.  
Brad Pick - Council Member, Le Mars  
Craig Schmidt - Mayor, Cherokee

## **STOUXLAND REGIONAL TRANSIT SYSTEM (SRTS) BOARD OF DIRECTORS**

The SRTS Board of Directors governs the Siouxland Regional Transit System. Meetings are typically held on the fourth Thursday of January, March, May, June, September, and November.

Vince Phillips, Chair - Supervisor, Monona Co.  
Devlun Whiteing, Vice Chair - Supervisor, Ida Co.  
Dave Dietrich - Supervisor, Woodbury Co.  
Dough Manley - Supervisor, Plymouth Co.  
Shane Bellefy - Supervisor, Cherokee Co.

**INTERESTED IN JOINING? CONTACT EXECUTIVE DIRECTOR  
MICHELLE BOSTINELOS AT [MBOSTINELOS@SIMPCO.ORG](mailto:MBOSTINELOS@SIMPCO.ORG).**



# ADDITIONAL COMMITTEES

## **SIMPCO REGIONAL POLICY & LEGISLATIVE AFFAIRS COMMITTEE**

The Regional & Legislative Affairs Committee reviews and prioritizes regional legislative issues for recommendation to the SIMPCO Board. Meetings are typically held on the first Thursday of each month from September to April.

## **COMPREHENSIVE ECONOMIC DEVELOPMENT STRATEGY COMMITTEE (CEDS)**

The CEDS Committee guides the development and implementation of SIMPCO's five-year economic development plan for its district, covering counties in Iowa and Nebraska. The committee fosters regional collaboration, identifies strategy gaps, supports grant efforts, and updates the plan. Recommendations may be made to the SIMPCO Board. Meetings are held quarterly.



---

## **METROPOLITAN PLANNING ORGANIZATION (MPO) BIKE/PED**

The Bicycle/Pedestrian Roundtable unites local stakeholders to enhance biking and walking infrastructure in the Sioux City metro. The group supports projects like bike racks, safe routes to school, trail connections, and sidewalk upgrades. Meetings are held quarterly, with recommendations made to the MPO.

## **SIMPCO TRANSPORTATION ADVISORY GROUP (TAG)**

The Transportation Advisory Group (TAG) guides the Passenger Transportation Plan, linking transit with health, human services, and private providers to improve mobility for seniors, low-income individuals, and people with disabilities. TAG may advise both the MPO and SRTPA. Meetings are held twice a year.

## **DAKOTA COUNTY RURAL ECONOMIC DEVELOPMENT (RED) COMMITTEE**

The Dakota County RED Committee promotes community and economic development in Dakota County, NE, focusing on property enhancement, business growth, workforce development, and site exploration. Meetings are held quarterly.

## **WATER RESOURCE COMMITTEE**

The Water Resources Committee is an advisory group to the SIMPCO Board of Directors. The committee discusses issues and concerns with area rivers and flooding. Meetings are typically held quarterly.

## **IOWA'S WEST COAST INITIATIVE COMMITTEE (IWCI)**

The IWCI encourages entrepreneurship in Woodbury, Plymouth, and Monona counties by connecting and inspiring entrepreneurs to collaborate, explore ideas, and take entrepreneurial action. Meetings are typically held on the second Tuesday of each month.

## **REGION IV LOCAL EMERGENCY PLANNING COMMITTEE (LEPC) & REGION IV HAZARDOUS MATERIALS RESPONSE COMMISSION (HMRC)**

The Region IV LEPC and Commission oversee hazardous materials preparedness in Cherokee, Ida, Monona, Plymouth, and Woodbury counties. The Commission, formed by a 28E agreement, holds its annual meeting in April; LEPC meets quarterly.

**TO KEEP INFORMED ABOUT UPCOMING MEETINGS  
& EVENTS, OR TO ACCESS MEETING AGENDAS &  
MINUTES, YOU CAN EITHER SCAN THE QR CODE  
PROVIDED BELOW OR VISIT OUR WEBSITE AT:  
[HTTPS://SIMPCO.ORG/ABOUT-US/MEETINGS/](https://simpco.org/about-us/meetings/)**



## **SIMPCO STAFF**

**MICHELLE BOSTINELOS**  
EXECUTIVE DIRECTOR  
MBOSTINELOS@SIMPCO.ORG

**BRIAN PEARSON**  
TRANSIT & FACILITY DIRECTOR  
BPEARSON@SIMPCO.ORG

**JOSHUA BUSH**  
FINANCE DIRECTOR  
JOSHUA@SIMPCO.ORG

**JENNY ANDERSON**  
HOUSING MANAGER  
JENNY@SIMPCO.ORG

**BRENDA BERENS**  
TRANSIT MANAGER  
BRENDA@SIMPCO.ORG

**SHARON BURTON**  
EXECUTIVE ASSISTANT  
SHARON@SIMPCO.ORG

**EMILY GUTHRIE**  
EXECUTIVE ASSISTANT  
EMILY@SIMPCO.ORG

**TONIA ABELL**  
ADMINISTRATIVE ASSISTANT  
TONIA@SIMPCO.ORG

**CORINNE ERICKSON**  
REGIONAL PLANNING  
MANAGER  
CORINNE@SIMPCO.ORG

**DAWN KIMMEL**  
REGIONAL PLANNER II  
DAWN@SIMPCO.ORG

**RYAN BRAUER**  
REGIONAL PLANNER / GIS  
RYAN@SIMPCO.ORG

**NATHAN KISTNER**  
REGIONAL PLANNER  
NATHAN@SIMPCO.ORG

**BESS SEAMAN**  
REGIONAL PLANNER  
BESS@SIMPCO.ORG

**OPEN POSITION**  
IOWA'S WEST COAST INITIATIVE  
ENTREPRENEURIAL COMMUNITY  
NAVIGATOR

**THE DEDICATED INDIVIDUALS  
BEHIND OUR MISSION**



# THANK YOU

## WE ARE READY TO ASSIST YOU

Whether you have questions about our services, need assistance with something specific, or want to learn more about our organization, the SIMPCO team is ready to provide personalized support tailored to your unique needs.

At SIMPCO, we pride ourselves on our commitment to excellence and our dedication to serving our community. Our team of experienced professionals is here to help you navigate any challenges you may face and to provide you with the information and resources you need.



6401 Gordon Drive  
Sioux City, Iowa 51106



(712) 279-6286



[www.simpco.org](http://www.simpco.org)



**YOUR CONTRIBUTIONS MAKE  
A REAL DIFFERENCE.**