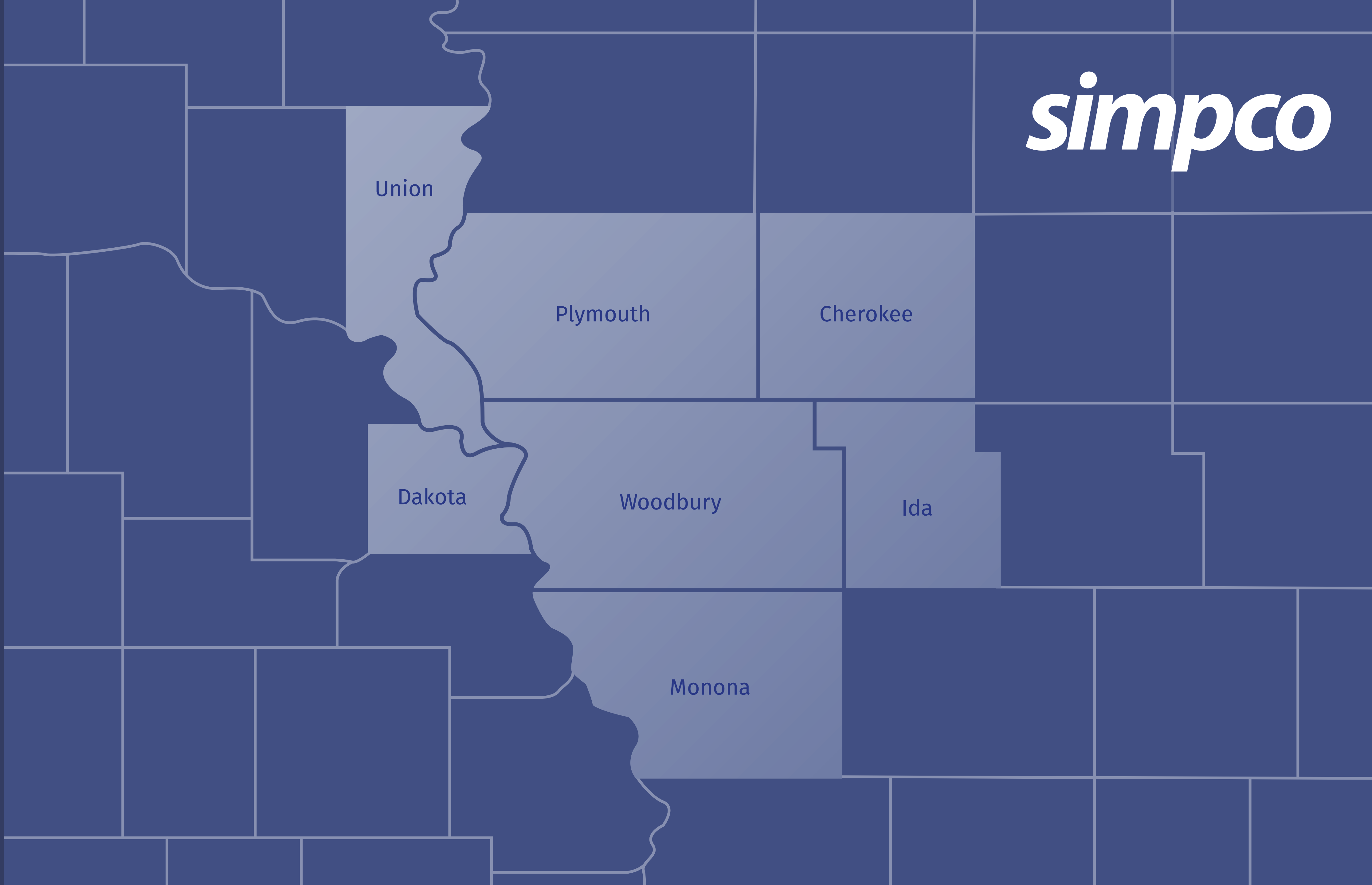


LEGISLATIVE PRIORITIES 2020



Union

Plymouth

Cherokee

Dakota

Woodbury

Ida

Monona

simpco

SIMPCO adopts the following general legislative priorities as they relate to four overarching elements including: Infrastructure, Economic & Workforce Development, Housing and Quality of Life.

INFRASTRUCTURE IMPROVEMENTS

- Maintain & Modernize the Transportation System
- Continue to Support the Development of Alternative Transportation (*Transit, Bicycle, Pedestrian*)
- Maintain and Modernize Water/Waste Water Facilities
- Continued Investment in Renewable Energy, Natural Gas and Broadband
- Revise/Update Regulations to Ensure an Emphasis on River Management

DIVERSE, AFFORDABLE, AND MARKET-RATE HOUSING

- Support New Housing Incentive Programs
- Encourage Workforce Housing
- Support Housing Rehabilitation Programs

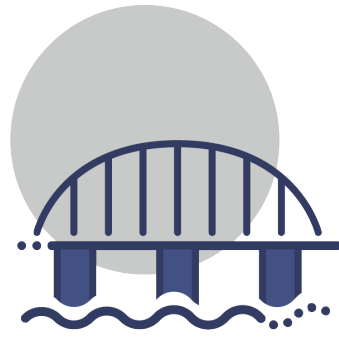
QUALITY OF LIFE

- Support Emergency Services in Rural Communities
- Create and Enhance Recreational, Cultural Resource, and Place-Making Opportunities
- Support Regional Initiatives that Promote Smart Growth Development

ECONOMIC & WORKFORCE DEVELOPMENT

- Support Urban Revitalization and Downtown Revitalization
- Expand Brownfield/Vacant Property Programs
- Preserve Tax Increment Financing (*TIF*)
- Develop Programs that Support Business Retention and Recruitment
- Increase Programs that Match Education with Available Employment (*Career Academy, Internships, Apprenticeships, STEM and Work-Based Learning*)
- Enhance Entrepreneurship Opportunities
- Increase Tourism
- Support Community Planning Guidance
- Encourage Population Growth

SIMPCO is a catalyst for regional cooperation, uniting local governments in the Tri-State Siouxland region. We partner with local governments in long-range planning, community development activities, and regional program management to foster intelligent growth, economic development and safe, accessible transportation.



INFRASTRUCTURE IMPROVEMENTS

- Through SIMPCO's Transportation Improvement Program, \$210 Million in Federal, State and local funds are programmed (FY 2021 – 2024) for regional transportation projects.
- \$243,580 in grant funds were secured for bicycle and pedestrian improvement projects in the Siouxland area.
- \$453,000 in grant funds were awarded to communities for water and waste water infrastructure improvements.
- Completed the 2045 Long Range Transportation Plan for the SIMPCO Metropolitan Planning Organization (MPO, Sioux City metro area).



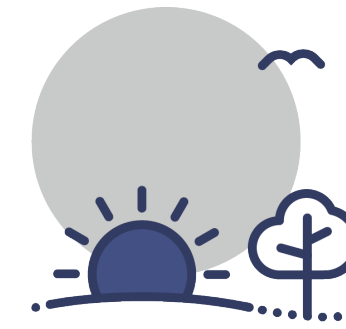
ECONOMIC & WORKFORCE DEVELOPMENT

- SIMPCO was awarded \$400,000 in U.S. EDA CARES Act funds to provide technical and planning services for economic recovery and resilience efforts related to the COVID-19 pandemic.
- SIMPCO was awarded approximately \$318,597 in assistance from U.S. EDA, Iowa Economic Development Authority, and Nebraska Department of Economic Development to be used for economic development planning, research, and technical service throughout the region.
- SIMPCO assisted three communities with grant applications related to economic and workforce development equaling \$2 million in awarded funds.



DIVERSE, AFFORDABLE AND MARKET-RATE HOUSING

- SIMPCO housing programs expanded over half a million dollars in grant funds for housing rehab projects throughout the region.
- SIMPCO housing programs rehabilitated 27 owner-occupied homes in the past year.
- SIMPCO contracted with 17 local contractors and sub-contractors for rehabilitation projects.
- SIMPCO was awarded \$120,000 in grant funds to provide financial assistance to landlords and tenants in Nebraska.



QUALITY OF LIFE

- SIMPCO wrote three award winning grants equaling \$12,500 for Siouxland communities to improve community spaces.
- SIMPCO helped secure \$5,000 in grant funding for emergency service equipment for rural communities in the Siouxland region.
- Completed Hazard Mitigation Plans for Woodbury, Plymouth, Cherokee, Ida and Monona counties.
- SIMPCO was awarded \$60,000 in funds to help initiate quality of life improvements for senior citizens and children within the Siouxland Area.

2021 BY THE NUMBERS



20
22

ABOUT SIMPCO

The Siouxland Interstate Metropolitan Planning Council (SIMPCO) is a council of governments serving seven counties in the Tri-State area of Iowa, Nebraska and South Dakota. SIMPCO's service area covers over 50 local governments, special districts, school districts and non-profit organizations in the Tri-State area.

MEMBERS

Cherokee County, IA

Aurelia, Cherokee, Cleghorn, Larrabee, Marcus, Meriden, Quimby, Washta

Dakota County, NE

Dakota City, Emerson, Homer, Hubbard, Jackson, South Sioux City

Ida County, IA

Arthur, Galva, Holstein, Ida Grove

Monona County, IA

Blencoe, Castana, Mapleton, Moorhead, Onawa, Rodney, Soldier, Whiting, Ute

Plymouth County, IA

Akron, Craig, Hinton, Kingsley, Le Mars, Remsen

Union County, SD

Dakota Dunes, North Sioux City

Woodbury County, IA

Anthon, Bronson, Correctionville, Hornick, Lawton, Merville, Oto, Pierson, Salix, Sergeant Bluff, Sioux City, Smithland

SIMPCO ASSOCIATE MEMBERS

Western Iowa Tech Community College, Sioux City Community School District, Briar Cliff University

SIMPCO CONTACT INFORMATION

Michelle Bostinelos, Executive Director

1122 Pierce Street

Sioux City, Iowa 51105

Phone: 712-279-6286

Email: simpco@simpco.org

Website: simpco.org

 /simpcocog  @simpcocog

Union

Plymouth

Cherokee

Dakota

Woodbury

Ida

Monona

simpco