

SCOPE OF SERVICES

For

Sioux City South Lakeport Street/Sergeant Road Corridor Study

Request for Qualifications (RFQ)

January 26, 2023

Introduction

SIMPCO requests proposals from qualified firms or teams of firms with the appropriate expertise to develop a complete corridor study of the South Lakeport Street and Sergeant Road area in Sioux City, Iowa that addresses access control, land use, bicycle and pedestrian access, transportation safety, and traffic signalization. This area has been identified as having increasing congestion, especially during peak and holiday times, and will benefit from a study addressing vehicular traffic conditions, land use and aesthetics, and bicycle and pedestrian considerations. The complete study area includes South Lakeport Street from Gordon Drive to Singing Hills Boulevard and on Sergeant Road from Southern Hills Drive to Sunnybrook Drive. The consultant firm(s) will evaluate current conditions and propose improvements related to the study scope stated below.

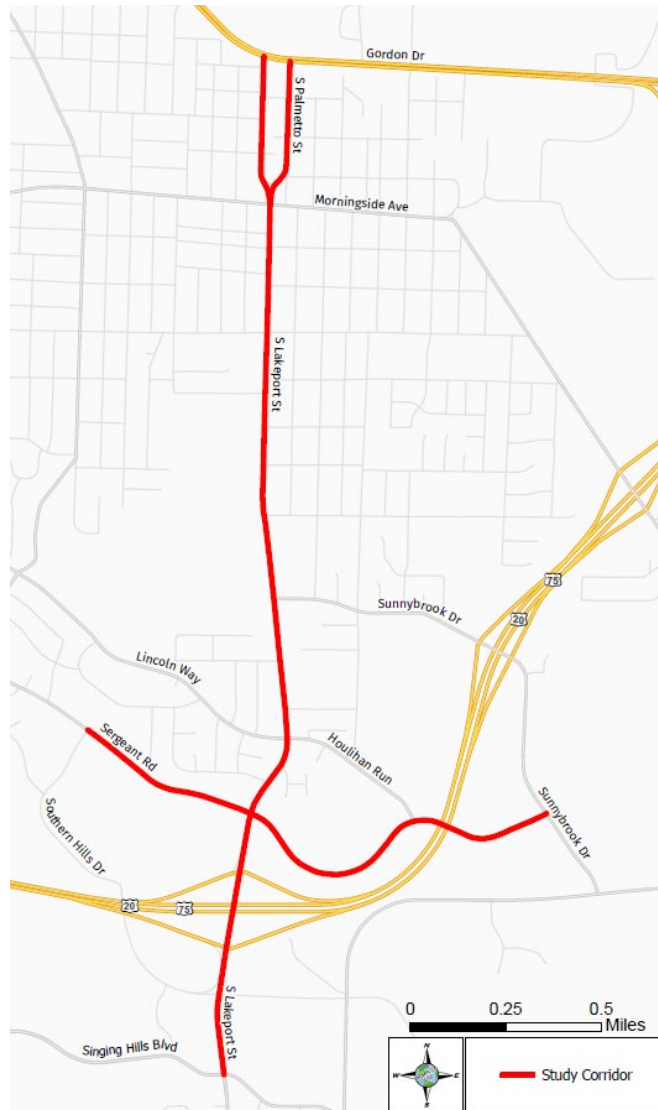
Project Background

The MPO has identified the need to conduct a corridor study on South Lakeport Street between Gordon Drive and Singing Hills Boulevard and on Sergeant Road from Southern Hills Drive to Sunnybrook Drive. The study will address access control, land use, bicycle and pedestrian access, transportation safety, traffic signalization. The goal is to improve level of service through the corridor, to include all modes of transportation, and to improve the overall safety of the corridor. The SIMPCO MPO 2045 Long Range Transportation Plan identifies the proposed study area as containing future congested segments starting in 2025. This study addresses current conditions and provides insight into potential future improvements in the area. The project is regional in nature due to the large traffic generators including large regional shopping complexes within the corridor. The 2019 Annual Average Daily Traffic (AADT) counts on South Lakeport north and south of the U.S. Highway 75 and 20 interchange are around 20,000 vehicles per day and AADT counts on South Lakeport near Lincoln Way are over 10,000 vehicles per day.

Study Area

Study Location:

Sioux City on South Lakeport Street between Gordon Drive and Singing Hills Boulevard (including South Palmetto Street between Gordon Drive and Morningside Avenue), and Sergeant Road from Southern Hills Drive to Sunnybrook Drive.



Scope of Project/Work:

- Planning analysis of current land uses and the effects of potential land (re)development on the transportation system.
- Transportation analysis including evaluation of transportation impacts due to land use development, traffic signal warrants, traffic signal timing, evaluating access points, and evaluating pedestrian and bicycle transportation routes along the corridor.
- Evaluation of all traffic control devices, including pavement markings.
- Consideration of 4- to 3- lane conversions or alternative designs, where appropriate.
- Conceptual layouts of potential corridor functionality improvements for vehicular and alternative transportation modes where applicable, including signalization improvements and traffic controls.

- Project priority summary, cost estimates and funding recommendations, and implementation plan.
- Public participation including solicitation of comments within the study area and throughout the MPO planning area.
- Development of stakeholder/steering committee

Key Tasks (not all-inclusive):

- **Land use Element:** Evaluation of current land use along the corridor and the effects of potential redevelopment on the transportation system.
- **Traffic Counts:** All traffic counts are to be completed by the consultant.
- **Travel Connections:** Evaluation of intersections and access points.
- **Levels of Service (LOS):** This task involves analyzing the existing LOS compared to the predicted LOS of any proposed land use or traffic signal changes.
- **Traffic Simulation:** This task involves identifying possible traffic issues due to the spacing of signals and how it may operate with any proposed changes.
- **Bicycle and Pedestrian Impacts:** This task involves addressing potential bicycle and pedestrian routes and impacts due to land use changes and/or proposed traffic signal changes.
- **Traffic Safety Problems:** Identify potential traffic safety problems within the study area and address within the potential alternatives.
- **Alternatives:** This task involves identifying and evaluating potential alternatives and developing an implementation plan. This may include other street improvements and/or configurations to achieve the best results.
- **Deliverables:** Deliverables for this task include a summary of existing conditions to include land use analysis, locations of unwarranted traffic signals, potential alternatives, guidance for phasing the removal of unwarranted signals if applicable, implementation guidance, and an updated and improved timing plan.

Submittal Requirements

Any questions regarding this RFQ should be submitted via email to ryan@simpco.org using the subject line “Sioux City South Lakeport Street/Sergeant Road Corridor Study”. Any responses to questions will be made available to all submitted proposal agencies via email or phone call.

Responses to the RFQ must be received by Ryan Brauer as follows:

Due Date:	February 23, 2023
Time:	Prior to 5:00 p.m. CST
Deliver to:	Ryan Brauer, Regional Planner SIMPCO 1122 Pierce Street Sioux City, IA 51105 ryan@simpco.org
Deliverable:	1 electronic (PDF) copy

Proposal Content

To standardize responses and simplify the comparison and evaluation of responses, all statements must be organized in the manner set forth below, separated into sections, and appropriately labeled. All information and materials requested shall be provided in the proposal under a single cover.

Cover Letter

The full name and address of the firm's organization and the branch office that will perform the services described herein shall be stated. The Principal-in-Charge of the branch office shall be identified. Summarize the Consultants' interest in the project as well as identify the name and contact information of the designated Project Manager.

Technical Approach and Scope of Work

The responding firm shall state its understanding of the project as outlined in the Scope of Services. The approach in rendering the services required, including the use of subconsultants, shall be detailed in a proposed Scope of Services.

Company Profile(s)/Description

Provide a description of the team in as much detail as necessary to demonstrate the team's ability to carry out the scope of services as requested in this RFQ. Include a description for the prime and any sub-consultants that may be used for this effort.

Project Personnel

Qualifications of the project manager and personnel, including anticipated sub-consultants, with specialized skills shall be highlighted. A list of sub-consultants that will be used and the work they will perform. Provide an organizational chart of proposed team members. Resumes for all key personnel listed shall be included and show the following:

- Name, specialty, and job title
- Years of relevant experience with firm (and previous employers)
- Academic degree(s), discipline, and year degree(s) received
- Professional registrations
- Office location of Project Manager
- A synopsis of experience, training or other qualities that reflect the individual's related experience and expected contribution to the project.
- A brief history of professional certifications, registrations, and licenses that your firm / individuals hold that pertain to this project. If the firm or personnel have had their professional certification, registration, and / or license revoked, suspended, sanctioned please provide the dates and circumstances as a part of this response.

Past Performance

For each consultant, provide a maximum of three (3) examples of similar or related projects successfully completed within the last five years.

Project Approach

Provide a concise summary of the firm or team’s approach to the project. If your proposal includes any variation to the proposed scope of work (reduced or additional services), please identify and provide justification for any modifications.

Project Schedule

Discuss the consultant’s and anticipated sub-consultant’s current workload and its ability to complete the project in a timely manner. Provide a proposed timeline for completing the deliverables.

Evaluation and Selection Process

Qualifications will be evaluated by a selection committee established by SIMPCO using the Selection Criteria in the table shown below, to identify the firm or firms best qualified to meet downtown’s needs on this project. The firm(s) deemed best qualified by the selection committee may be invited for additional presentation and interviews. However, SIMPCO reserves the right to request interviews of any, all, or none of the consultants.

Item	Selection Criteria	Rating Ranges
1	Experience, Qualifications and Expertise Firm’s experience with similar projects, qualifications and expertise of key personnel and subconsultants.	(0-20)
2	Capabilities and Resources Projects currently under contract involving equipment and key personnel that would also handle this project along with estimated time of completion. Availability and responsiveness of staff in local area.	(0-15)
3	Project Overview Convey your understanding of the project objectives. Identify major problems which you perceive at this time. Describe the overall approach you will use to overcome the problems and efficiently complete this project.	(0-25)
4	References Information on other organizations for which your firm has provided comparable consulting services.	(0-10)
5	Quality and Thoroughness of a Proposal	(0-15)
6	Additional Factors City experience and other related information.	(0-15)
TOTAL (100 pts max)		
ADDITIONAL COMMENTS		